

LED enclosure light - PLD E 400 W 375 - 2702222

Please be informed that the data shown in this PDF Document is generated from our Online Catalog. Please find the complete data in the user's documentation. Our General Terms of Use for Downloads are valid (<http://phoenixcontact.com/download>)



LED enclosure light, 24 V DC, degree of protection IP20, color temperature 5000 K, length 375 mm, pivoting, can be switched in series, including mounting accessories

Product Description


The LED light is designed to illuminate the interior of control cabinets. The prismatic integrated into the light cover ensures optimum illumination of the control cabinet. It enables tool-free assembly with the clip system. This allows several lights to be successively switched. The light can be switched on and off either via the integrated button or external door position switch.

Why buy this product

- ✓ Tool-free mounting, thanks to clip fastening
- ✓ Wiring via sensor/actuator cables with M8 snap-in technology
- ✓ Series connection reduces cabling effort for control cabinets arranged in series
- ✓ Optimum lighting of the control cabinet, thanks to integrated prismatic and capacity to swivel
- ✓ Swiveling enables optimum adjustment to the relevant control cabinet depth
- ✓ LED service life of 50,000 h (L70 value) prevents bulb replacement



Key Commercial Data

Packing unit	1 STK
GTIN	 4 055626 057781
GTIN	4055626057781

Technical data

Note

Utilization restriction	EMC: class A product, see manufacturer's declaration in the download area
-------------------------	---

Dimensions

Width	23 mm
Height	38 mm
Length	375 mm

Ambient conditions

LED enclosure light - PLD E 400 W 375 - 2702222

Technical data

Ambient conditions

Ambient temperature (operation)	-25 °C ... 60 °C
Ambient temperature (storage/transport)	-40 °C ... 85 °C
Permissible humidity (operation)	5 % ... 95 %
Permissible humidity (storage/transport)	5 % ... 95 %
Air pressure (operation)	70 kPa ... 106 kPa (up to 3000 m above sea level)
Air pressure (storage/transport)	70 kPa ... 106 kPa (up to 3000 m above sea level)
Degree of protection	IP20

General

Housing material	Plastic
Assembly instructions	Magnet attachment available as an accessory Screw fixings available as accessories
Net weight	170 g
Mounting type	Clip mounting

Power supply for module electronics

Connection method	M8 connector (snap-in)
Number of positions	3
Supply voltage	24 V DC
Supply voltage range	19.2 V DC ... 30 V DC
Power consumption	3 W

Connection data

Connection method	M8 connector (snap-in)
-------------------	------------------------

Light properties

Source of light type	LED
Number of LEDs	12
Service life, lighting appliance	50,000 h (L70)
Light color	Neutral white
Color temperature	5000 K
Color rendering index	75
Luminous flux	340 lm (Net luminous flux)
Illumination	max. 845 lx (50 cm distance)

Standards and Regulations

Mechanical tests	Vibration resistance in acc. with EN 60068-2-6/IEC 60068-2-6 5g Shock in acc. with EN 60068-2-27/IEC 60068-2-27 25g, 11 ms period, half-sine shock pulse Continuous shock according to EN 60068-2-27/IEC 60068-2-27 10g
Protection class	III

Environmental Product Compliance

China RoHS	Environmentally friendly use period: unlimited = EFUP-e
------------	---

LED enclosure light - PLD E 400 W 375 - 2702222

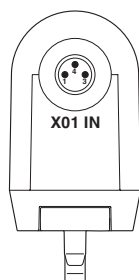
Technical data

Environmental Product Compliance

	No hazardous substances above threshold values
--	--

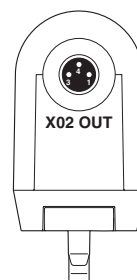
Drawings

Connection diagram



Connection of the supply voltage of a light

Connection diagram



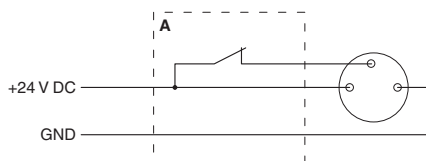
Forwarding of the supply voltage with the series connection of lights

Schematic diagram



Connection of a light

Connection diagram



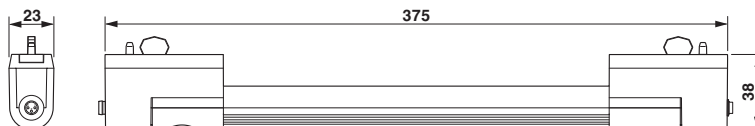
Connection of the light using a door position switch (A)

Schematic diagram



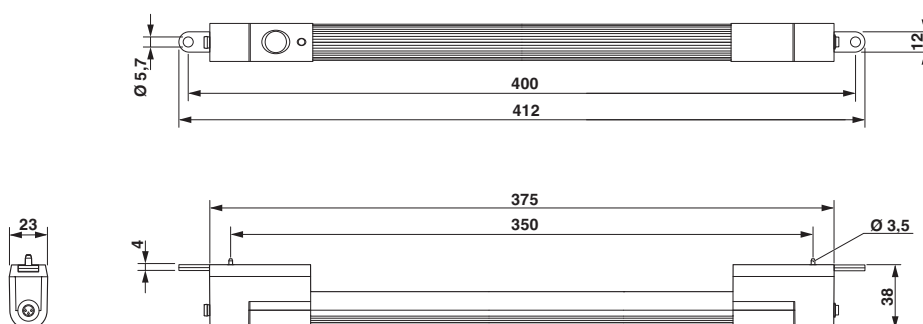
Series connection of two lights

Dimensional drawing



LED enclosure light - PLD E 400 W 375 - 2702222

Dimensional drawing



Dimensional drawing for screw mounting

Approvals

Approvals

Approvals

UL Listed / cUL Recognized / cUL Listed / UL Recognized / cULus Listed / cULus Recognized

Ex Approvals

Approval details


UL Listed		http://database.ul.com/cgi-bin/XYV/template/LISEXT/1FRAME/index.htm	FILE E 362966
mm ² /AWG/kcmil		30-14	

cUL Recognized		http://database.ul.com/cgi-bin/XYV/template/LISEXT/1FRAME/index.htm	FILE E 255026
mm ² /AWG/kcmil		30-14	

cUL Listed		http://database.ul.com/cgi-bin/XYV/template/LISEXT/1FRAME/index.htm	FILE E 362966
mm ² /AWG/kcmil		30-14	

LED enclosure light - PLD E 400 W 375 - 2702222

Approvals

UL Recognized		http://database.ul.com/cgi-bin/XYV/template/LISEXT/1FRAME/index.htm	FILE E 255026
mm ² /AWG/kcmil		30-14	

cULus Listed	
--------------	---

cULus Recognized	http://database.ul.com/cgi-bin/XYV/template/LISEXT/1FRAME/index.htm
------------------	---

Phoenix Contact 2018 © - all rights reserved
<http://www.phoenixcontact.com>

PHOENIX CONTACT GmbH & Co. KG
Flachsmarktstr. 8
32825 Blomberg
Germany
Tel. +49 5235 300
Fax +49 5235 3 41200
<http://www.phoenixcontact.com>