

FEATURES

- Supports upto 48 I/Os (32 digital inputs & 16 Relay Outputs)
- 250 Lines of ladder programming
- 16 soft text messages, Time Switches, Compare Counters, Timers, and Counters
- Daylight saving feature available
- Backlit LCD Screen for display & modification of pre-selected parameters of function blocks, viewing I/O status and programming of the device
- PC software for programming, online & offline simulation, documentations & printing
- Designed for use in automation and commercial & Industrial sectors

Software to Download:

[CLICK HERE](#)

RS PRO Logic Module and Accessories

Stock No: [917-6361](#) , [917-6370](#) , [917-6373](#) , [917-6377](#) , [917-6386](#) , [917-6389](#) , [917-6399](#) , [917-6395](#)



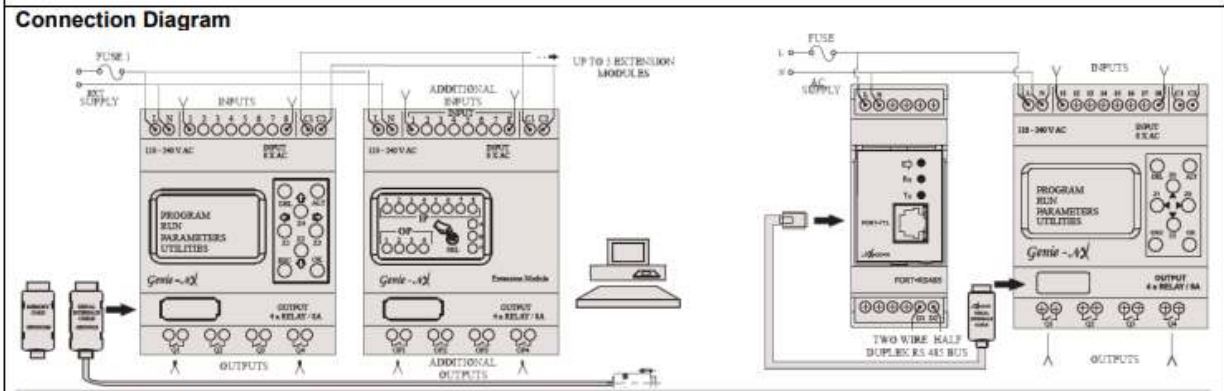
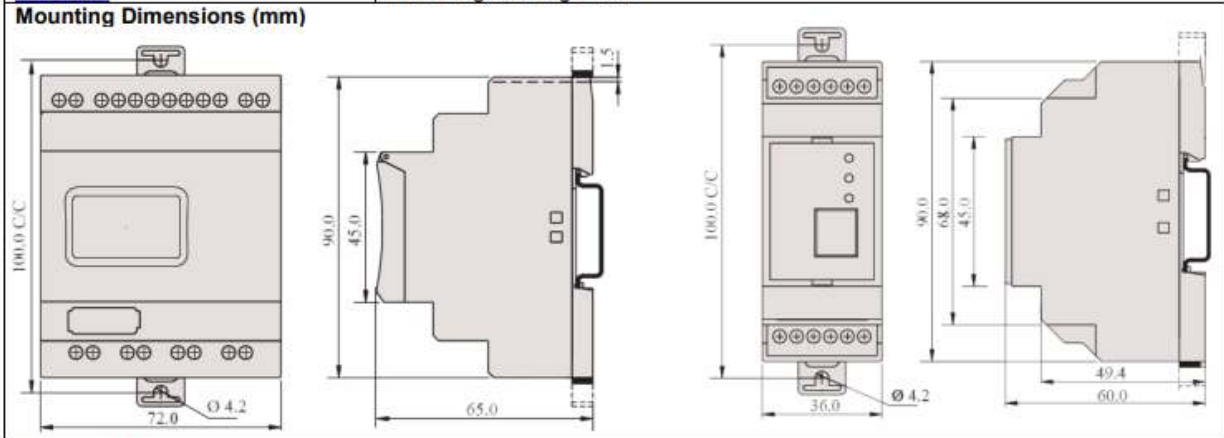
RS Professionally Approved Products brings you professional quality parts across all product categories. Our product range has been tested by engineers and provides a comparable quality to the leading brands without paying a premium price.

Product Description

RS Stock No		917-6361	917-6370
Parameters			
Supply Voltage		110-240 VAC	12-24 VDC
Supply Variation		-20% to +10% of supply	
Frequency		50/60Hz	
Power Consumption		-5W	
Digital Inputs		8	6
Analog Inputs		N/A	2 (Can be used as Digital Inputs)
Digital Input range		(0-40VAC) OFF, (80-265VAC) ON	(0-4 VDC) OFF, (8-26.4 VDC) ON
Analog Inputs Range		N/A	0 to 10 VDC
Digital Output	Relay Output	4 SPNO	
	Contact Rating	8A @ 240 VAC / 5A @ 30 VDC (Resistive)	
	Electrical Life	10 ⁵	
	Mechanical Life	10 ⁷	
Utilization Category	AC-15	Rated Voltage (Ue): 120/240 V, Rated Current (Ie): 3.0/1.5 A	
	DC-13	Rated Voltage (Ue): 24/125/250 V, Rated Current (Ie): 2.0/0.22/0.1 A	
I/O Extensions (Max)		3	
Power Reserve (For Clock Only)		7 yrs. (at -10°C to 55°C)	
Modbus Communication		Yes (RTU)(Slave)	
DST		Settable	
Lines for ladder Programming		250	
Function Blocks	Timers	16 (on Delay, Interval, Cyclic ON-OFF, OFF Delay)	
	Counters	16 (up / down, retentive selectable)	
	Time Switches	16 (weekly / daily)	
	Compare Counters	16	
	Analog Functions	N/A	12
	Soft Text Messages	16 Priority driven	
	Auxiliary relays	64	
Hour Meter	4		
Operating Temperature		-10°C To + 55°C	
Storage Temperature		-25°C To + 70°C	
Humidity (Non Condensing)		95% (Rh)	
Enclosure		Flame retardant UL 94-V0	
Dimension (W x H x D) (in mm)		72 X 90 X 65	
Weight (unpacked) Approx.		230g	
Mounting		Base / DIN Rail	
Degree of Protection		IP 20 for Terminals, IP 40 for Enclosure	
Certification			
EMI / EMC			
Harmonic Current Emissions	IEC 61000-3-2	Ed. 3.2 (2009-04) Class A	
ESD	IEC 61000-4-2	Ed. 2.0 (2008-12) Level II	
Radiated Susceptibility	IEC 61000-4-3	Ed. 3.2 (2010-04) Level III	
Electrical Fast Transients	IEC 61000-4-4	Ed. 3.0 (2012-04) Level IV	
Surges	IEC 61000-4-5	Ed. 2.0 (2005-11) Level IV	
Conducted Susceptibility	IEC 61000-4-6	Ed. 3.0 (2008-10) Level III	
Voltage Dips & Interruptions (AC)	IEC 61000-4-11	Ed. 2.0 (2004-03) All 7 Levels	
Voltage Dips & Interruptions (DC)	IEC 61000-4-29	Ed. 1.0 (2000-08) All 5 Levels	
Conducted Emissions	CISPR 14-1	Ed. 5.2 (2011-11) Class A	
Radiated Emissions	CISPR 14-1	Ed. 53.2 (2011-11) Class A	

Environmental		
Cold heat	IEC 60068-2-1	Ed. 6.0 (2007-03)
Dry Heat	IEC 60068-2-2	Ed. 5.0 (2007-07)
Vibration	IEC 60068-2-6	Ed. 7.0 (2007-12) 5g
Repetitive Shock	IEC 60068-2-27	Ed. 4.0 (2008-02) 40g, 6ms
Non-Repetitive Shock	IEC 60068-2-27	Ed. 4.0 (2008-02) 30g, 15ms

Ordering Information	Description
RS Stock No	110 – 240 VAC Base Module with Display
917-6361	110 – 240 VAC Base Module Without Display
917-6373	12 – 24 VDC Base Module With Display
917-6370	12 – 24 VDC Base Module Without Display
917-6377	110 – 240 VAC Extension Unit
917-6386	12 – 24 VDC Extension Unit
917-6389	Memory Card
917-6399	USB Programming Cable
917-6395	



Terminal Torque & Capacity

	Torque - 1.1 N.m (10 Lb.in)
$\varnothing 3.5 - 5.0 \text{ mm}$	Terminal screw - M3.5
	Solid Wire - 2 X $\varnothing 2.25 \text{ mm}^2$
AWG	1 X 24 to 10