

Rittal – The System.

Faster – better – everywhere.

► Component Shelf 2 U, Static Installation – DK 7119.400

Date : Mar 19, 2018

ENCLOSURES

POWER DISTRIBUTION

CLIMATE CONTROL

IT INFRASTRUCTURE

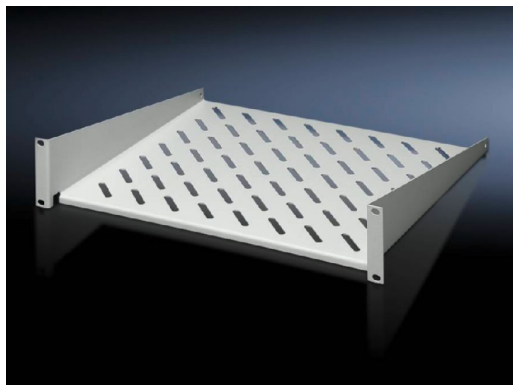
SOFTWARE & SERVICES

FRIEDHELM LOH GROUP



Component Shelf 2 U, Static Installation – DK 7119.400

created: 19.03.2018 build on www.rittal.com/us-en



Product description

Version:	19"
Description:	Mounted on vertical 482.6 mm (19") rails.
Applications:	For mounting on a 19" mounting level.
Material:	Carbon steel
Surface finish:	Spray-finished
Color:	RAL 7035
Note:	Not suitable for combination with telescopic slides.

Product features

Dimensions:	Width: 482.6 mm (19 ") Width: 19" Depth: 400 mm (16 ")
Height units:	2 U
Load capacity:	25 kg surface load, static
Packaging unit:	1 pc(s).
Weight/packaging	3.39 kg (7.5 lb.)

unit:	
EAN:	4028177187214
Customs tariff number:	94039010
ETIM 6.0:	EC002620
ETIM 5.0:	EC002620
eCl@ss 8.0/8.1:	27189261
eCl@ss 7.0/7.1:	27189261
eCl@ss 6.0/6.1:	27189261
eCl@ss 5.1/5.1.4:	27189218
Product description (long):	DK Component shelf, WHD: 482,6x2 Ux400 mm, 25 kg, static, distance between levels:, static installation, For 482.6 mm (19") system punchings, RAL 7035