

LED enclosure light - PLD E 400 W 500 - 2702223

Please be informed that the data shown in this PDF Document is generated from our Online Catalog. Please find the complete data in the user's documentation. Our General Terms of Use for Downloads are valid (<http://phoenixcontact.com/download>)



LED enclosure light, 24 V DC, degree of protection IP20, color temperature 5000 K, length 500 mm, pivoting, can be switched in series, including mounting accessories

Product Description


The LED light is designed to illuminate the interior of control cabinets. The prismatic integrated into the light cover ensures optimum illumination of the control cabinet. It enables tool-free assembly with the clip system. This allows several lights to be successively switched. The light can be switched on and off either via the integrated button or external door position switch.

Why buy this product

- Tool-free mounting, thanks to clip fastening
- Wiring via sensor/actuator cables with M8 snap-in technology
- Series connection reduces cabling effort for control cabinets arranged in series
- Optimum lighting of the control cabinet, thanks to integrated prismatic and capacity to swivel
- Swiveling enables optimum adjustment to the relevant control cabinet depth
- LED service life of 50,000 h (L70 value) prevents bulb replacement



Key Commercial Data

| | |
|--------------|---|
| Packing unit | 1 STK |
| GTIN |  4 055626 057798 |
| GTIN | 4055626057798 |

Technical data

Note

| | |
|-------------------------|---|
| Utilization restriction | EMC: class A product, see manufacturer's declaration in the download area |
|-------------------------|---|

Dimensions

| | |
|--------|--------|
| Width | 23 mm |
| Height | 38 mm |
| Length | 500 mm |

Ambient conditions

LED enclosure light - PLD E 400 W 500 - 2702223

Technical data

Ambient conditions

| | |
|--|---|
| Ambient temperature (operation) | -25 °C ... 60 °C |
| Ambient temperature (storage/transport) | -40 °C ... 85 °C |
| Permissible humidity (operation) | 5 % ... 95 % |
| Permissible humidity (storage/transport) | 5 % ... 95 % |
| Air pressure (operation) | 70 kPa ... 106 kPa (up to 3000 m above sea level) |
| Air pressure (storage/transport) | 70 kPa ... 106 kPa (up to 3000 m above sea level) |
| Degree of protection | IP20 |

General

| | |
|-----------------------|---|
| Housing material | Plastic |
| Assembly instructions | Magnet attachment available as an accessory Screw fixings available as accessories |
| Net weight | 274.65 g |
| Mounting type | Clip mounting |

Power supply for module electronics

| | |
|----------------------|------------------------|
| Connection method | M8 connector (snap-in) |
| Number of positions | 3 |
| Supply voltage | 24 V DC |
| Supply voltage range | 19.2 V DC ... 30 V DC |
| Power consumption | 5 W |

Connection data

| | |
|-------------------|------------------------|
| Connection method | M8 connector (snap-in) |
|-------------------|------------------------|

Light properties

| | |
|----------------------------------|-------------------------------|
| Source of light type | LED |
| Number of LEDs | 20 |
| Service life, lighting appliance | 50,000 h (L70) |
| Light color | Neutral white |
| Color temperature | 5000 K |
| Color rendering index | 75 |
| Luminous flux | 560 lm (Net luminous flux) |
| Illumination | max. 1350 lx (50 cm distance) |

Standards and Regulations

| | |
|------------------|---|
| Mechanical tests | Vibration resistance in acc. with EN 60068-2-6/IEC 60068-2-6 5g Shock in acc. with EN 60068-2-27/IEC 60068-2-27 25g, 11 ms period, half-sine shock pulse Continuous shock according to EN 60068-2-27/IEC 60068-2-27 10g |
| Protection class | III |

Environmental Product Compliance

| | |
|------------|---|
| China RoHS | Environmentally friendly use period: unlimited = EFUP-e |
|------------|---|

LED enclosure light - PLD E 400 W 500 - 2702223

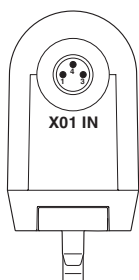
Technical data

Environmental Product Compliance

| | |
|--|--|
| | No hazardous substances above threshold values |
|--|--|

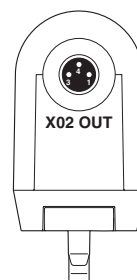
Drawings

Connection diagram



Connection of the supply voltage of a light

Connection diagram



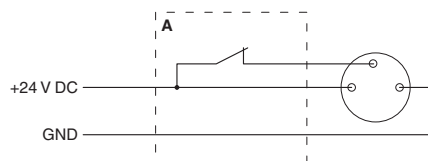
Forwarding of the supply voltage with the series connection of lights

Schematic diagram



Connection of a light

Connection diagram



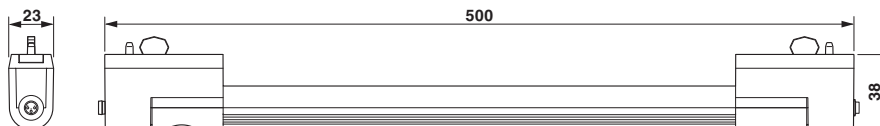
Connection of the light using a door position switch (A)

Schematic diagram



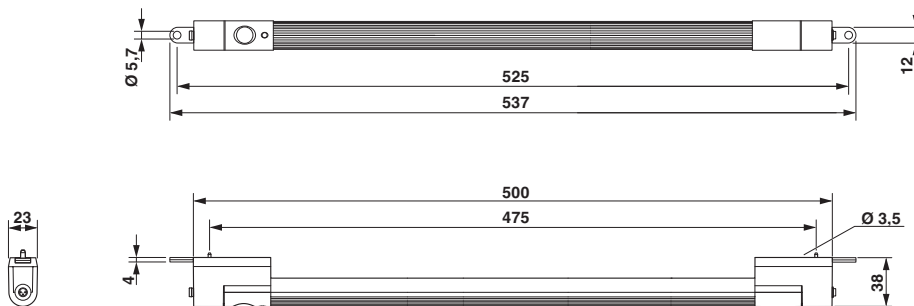
Series connection of two lights

Dimensional drawing



LED enclosure light - PLD E 400 W 500 - 2702223

Dimensional drawing



Dimensional drawing for screw mounting

Approvals

Approvals

Approvals

UL Listed / cUL Recognized / cUL Listed / UL Recognized / cULus Listed / cULus Recognized

Ex Approvals

Approval details


| | | | |
|----------------------------|--|---|---------------|
| UL Listed | | http://database.ul.com/cgi-bin/XYV/template/LISEXT/1FRAME/index.htm | FILE E 362966 |
| mm ² /AWG/kcmil | | 30-14 | |

| | | | |
|----------------------------|--|---|---------------|
| cUL Recognized | | http://database.ul.com/cgi-bin/XYV/template/LISEXT/1FRAME/index.htm | FILE E 255026 |
| mm ² /AWG/kcmil | | 30-14 | |

| | | | |
|----------------------------|--|---|---------------|
| cUL Listed | | http://database.ul.com/cgi-bin/XYV/template/LISEXT/1FRAME/index.htm | FILE E 362966 |
| mm ² /AWG/kcmil | | 30-14 | |

LED enclosure light - PLD E 400 W 500 - 2702223

Approvals

| | | | |
|----------------------------|---|---|---------------|
| UL Recognized |  | http://database.ul.com/cgi-bin/XYV/template/LISEXT/1FRAME/index.htm | FILE E 255026 |
| mm ² /AWG/kcmil | | 30-14 | |

| | |
|--------------|---|
| cULus Listed |  |
|--------------|---|

| | |
|------------------|---|
| cULus Recognized | http://database.ul.com/cgi-bin/XYV/template/LISEXT/1FRAME/index.htm |
|------------------|---|

Phoenix Contact 2018 © - all rights reserved
<http://www.phoenixcontact.com>

PHOENIX CONTACT GmbH & Co. KG
Flachsmarktstr. 8
32825 Blomberg
Germany
Tel. +49 5235 300
Fax +49 5235 3 41200
<http://www.phoenixcontact.com>