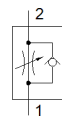
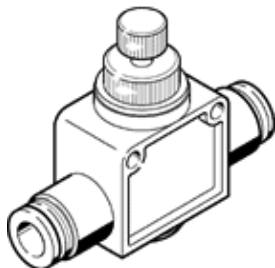


# One-way flow control valve GR-QB-1/4-U

Part number: 534682

**FESTO**



## Data sheet

Feature	Value
Valve function	One-way flow control function
Pneumatic connection, port 1	QB-1/4
Pneumatic connection, port 2	QB-1/4
Type of actuation	manual
Adjusting element	Slotted head screw
Mounting type	Optional Line installation with through hole
Standard nominal flow rate in flow control direction	4.7 cfm
Standard nominal flow rate in non-return direction	5 ... 5.5 cfm
Working pressure	-13.8 ... 116 Psi
Ambient temperature	0 ... 60 °C
Material housing	PBT-reinforced
Assembly position	Any
Standard flow rate in direction of flow control: 6 -> 0 bar	7.8 cfm
Standard flow rate in blocked direction: 6 -> 0 bar	10.6 ... 10.7 cfm
Operating medium	Compressed air in accordance with ISO8573-1:2010 [7:4:4]
Note on operating and pilot medium	Lubricated operation possible (subsequently required for further operation)
Medium temperature	32 ... 140 °F
Product weight	1 oz
Material of threaded plug	Brass Nickel plated
Materials note	Contains PWIS substances Conforms to RoHS
Material seals	NBR
Material release ring	POM
Material knurled head	Brass Nickel plated
Material adjusting screw	Brass Nickel plated