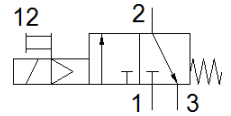
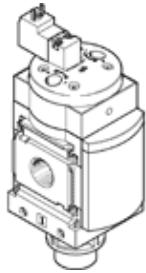


start valve MS4N-EE-1/4-10V24

Part number: 542588

FESTO



Data sheet

Feature	Value
Design structure	Piston slide
Type of actuation	electrical
Exhaust-air function	not throttleable
Manual override	Pushing
Type of reset	mechanical spring
Type of piloting	Piloted
Valve function	3/2 closed, monostable
Working pressure	4 ... 10 bar
C value	9.5 l/sbar
b value	0.44
Standard nominal flow rate	2,000 l/min
Duty cycle	100%
Characteristic coil data	24 V DC: 1.8 W
Operating medium	Compressed air in accordance with ISO8573-1:2010 [7:4:4] Inert gases
Note on operating and pilot medium	Lubricated operation possible (subsequently required for further operation)
Corrosion resistance classification CRC	2 - Moderate corrosion stress
Materials note	Conforms to RoHS
Medium temperature	-10 ... 50 °C
Protection class	IP65
Ambient temperature	-10 ... 50 °C
Mounting type	Optional Line installation with accessories
Assembly position	Any
Flow direction	non reversible
Product weight	273 g
Pneumatic connection, port 1	NPT1/4-18
Pneumatic connection, port 2	NPT1/4-18
Pneumatic connection, port 3	G1/4
Pilot air supply	Internal
Electrical connection	Plug Cubic design Per DIN EN 175301-803 Plug pattern type C to EN 175301-803
Material seals	NBR
Material housing	Aluminum die cast