

# Test Jacks 4 mm System



## Type

### KUN 30 / KUN 30 Au

4mm Adapter, nickel/ gold plated brass with solder terminal max 2.5mm<sup>2</sup>. Flexible, shatter-proof insulation sleeve

Pin Diameter

4 mm

PART NO. / Housing color

Nickel Plated	Gold Plated
● 931804100	● 931804700
● 931804101	● 931804701
● 931804102	● 931804702
● 931804103	● 931804703
● 931804104	● 931804704
○ 931804107 nickel	○ 931804707 gold



### PB 4

4mm test jack, dimensions according to DIN41649. Suitable for testing PCB boards during operation.

4 mm

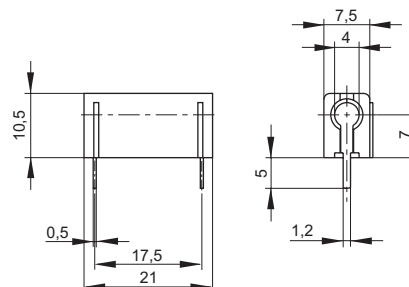
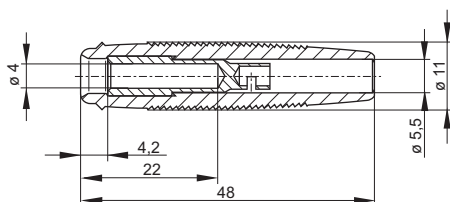
● 973582100
● 973582101

## Technical Data

Contact Type	jack Ø 4 mm	jack Ø 4 mm
Connection Type	solder terminal (max. 2.5mm <sup>2</sup> )	solder
Voltage Rating	30 VAC / 60 VDC	30 VAC / 60 VDC
Measurement Category (IEC61010)	CAT I	CAT I
Current Rating*	16 A	16 A
Contact Resistance	3 mOhm	5 mOhm
Mounting Type	-	PCB
<b>Material Specifications</b>		
Jack Body	nickel plated brass   gold plated brass	tin plated brass
Contact Spring	-	-
Housing	PVC-P	PC
<b>Environmental Conditions</b>		
Temperature Range	-25°C to +70 °C (-13 to 158°F)	-25°C to +70 °C (-13 to 158°F)
<b>Flamability Rating</b>		
Housing	-	UL 94 HB

## Drawing

Measurements are shown in millimeters.  
Multiply by 0.03937 to convert to inches.



\* Please consider derating graph on page 80.