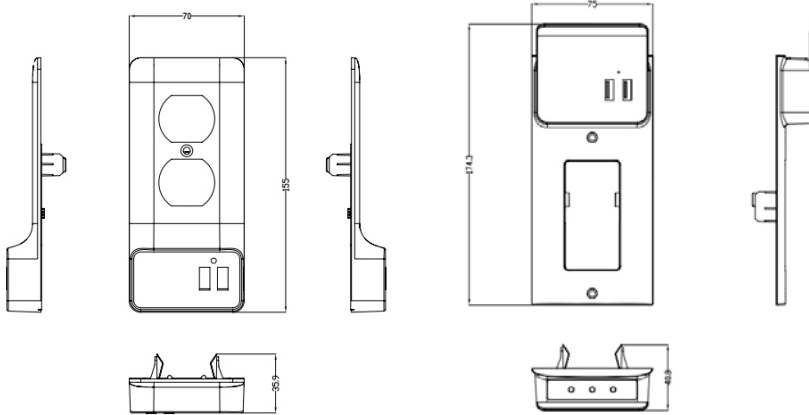


USB Charging Wall Plates

Quest offers a sleek duplex wall plate with USB charging. It is easy to install, simply remove the standard wall plate and replace it with the USB wall plate using the same screw. The USB wall plate will make electrical connections with the outlet automatically.

- Make any standard single gang AC outlet USB compatible
- Dual USB charging ports, leaves both wall outlets free for electrical devices
- Available in standard USB Wall Plate and Décor Style USB Wall Plate
- Charges most compatible USB devices directly without an adapter
- Constant voltage and constant current
- Replaces existing AC outlet wall plate
- Fast & easy installation, no wiring
- LED status light indicator
- Energy saving
- UL94V-0 flame retardant material



EPD-3028 Spec Dimensions: mm

EPD-3128 Spec Dimensions: mm



Fig. 1



Fig. 2

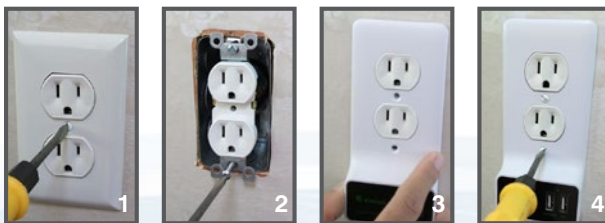
1-YEAR WARRANTY



Item #	Figure	Color	Description
EPD-3028	FIG. 1	WHITE	DUAL USB CHARGING DUPLEX STYLE WALL PLATE
EPD-3128	FIG. 2	WHITE	DUAL USB CHARGING DECOR STYLE WALL PLATE W/ CELL PHONE SHELF

Installation Method

CAUTION! It is critical to confirm that power has been shut off from the designated outlet before starting the installation.



- Step 1:** Unscrew the old wall plate
- Step 2:** Do not remove the top screw, remove the bottom screw
- Step 3:** Put on the new wall plate with USB ports
- Step 4:** Lightly secure set the two screws on cover

Physical Specifications

Size: 150mm x 70mm x 15mm
 Material: UL94V-0 Flame Retardant
 Certification: cETL, FCC, VOC, ICES

Electrical Specifications

Rate Voltage: 90-264V
 Input Current: 500mA
 Input Voltage: 100~240V
 Output Voltage: 5V / 2.1A Max

STRUCTURED CABLING
 FIBER OPTIC
 WIRE & CABLE
 RF COAXIAL
 HDMI & AUDIO/VIDEO
 WIRE MANAGEMENT
 INSTALLATION TOOLS