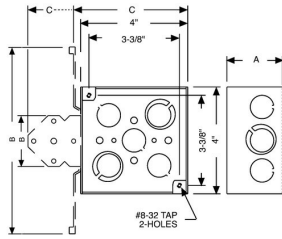




## 4 IN. SQUARE DRAWN BOXES - 1-1/4 TO 1-1/2 IN. DEEP WITH CONDUIT KO'S

4 in. Square Boxes, 1-1/2 in. Deep - Drawn with Conduit KO's  
Raised Ground

A09



Catalog #: 192

### APPLICATIONS

RACO® Boxes are installed in walls or ceilings for lighting fixtures, switches or receptacles  
Square boxes are used where multiple conductor runs are split into two or more directions to bring power to a number of electrical devices  
Drawn boxes are ideal for exposed work applications

### PRODUCT FEATURES

Combination screw heads provide for faster installation  
N/A

### UL LISTED

File E195978

### COMPLIANCES

All RACO® single gang, two gang, 4 in. square, and single gang gangable UL listed steel boxes are acceptable for use in 2-hour fire rated walls. For additional information, consult UL "Fire Resistance Directory" or the UL website at [www.ul.com](http://www.ul.com)  
MSDS  
[www.hubbell-rtb.com/certifications/Hubbell-RACO\\_MSDS\\_for\\_Steel\\_Boxes\\_and\\_Covers.pdf](http://www.hubbell-rtb.com/certifications/Hubbell-RACO_MSDS_for_Steel_Boxes_and_Covers.pdf)

### FIRE RESISTANCE

Acceptable for use in 2-hour rated walls

### GENERAL PRODUCT INFORMATION

Wiring System: Conduit  
Country of Origin: USA

### CONFIGURATION

Bracket Type: No Bracket  
Drawn or Welded: Drawn  
Raised Ground: Yes  
Side Knockout(s): (8) 1/2 in. & (4) 3/4 in.  
Bottom Knockouts(s): (2) 1/2 in. & (2) 3/4 in.

### DRAWING DIMENSIONS

Dimension A: 1-1/2 in.

### PRODUCT MEASUREMENTS

Depth: 1-1/2 in.  
Cubic Inches (cm3): 21.0 (344.1)  
Wt. Ea. (Lbs.): 0.660  
Product Length (in.): 1.56  
Product Width (in.): 4.00  
Product Height (in.): 4.00

### PACKAGING

Minimum Pack Qty.: 50  
Std. Pkg.: 50  
Product UPC-A Labeled: No  
Weight (Lbs. Per/C): 66.00  
Ship Carton Length (in.): 20.88  
Ship Carton Width (in.): 9.00  
Ship Carton Height (in.): 8.50  
Ctn Weight (Lbs.): 33.00  
Pallet Qty: 2750  
UPC Number: 050169901922  
I2of5: 50050169901927