

BOX TERMINAL 3 PCS. ACCESSORY FOR: 3VA6 400/600



Connections according IEC

Connectable conductor cross-section	
<ul style="list-style-type: none"> • for copper cable / finely stranded / maximum • for copper cable / stranded / maximum 	<p>240 mm²</p> <p>300 mm²</p>
Wire stripping length	26 mm
Tightening torque	
<ul style="list-style-type: none"> • at usage of copper-cables / multi-stranded • at usage of copper-cables / finely stranded 	<p><= 95 mm²: 16 Nm, >= 120 mm²: 28 Nm</p> <p><= 95 mm²: 16 Nm, >= 120 mm²: 28 Nm</p>

Connections according UL

Wire stripping length	1.0 in
Connectable conductor cross-section	
<ul style="list-style-type: none"> • for copper-cable / multi-stranded / minimum • for copper-cable / multi-stranded / maximum • for copper-cable / finely stranded / minimum • for copper-cable / finely stranded / maximum 	<p>1/0 AWG</p> <p>500 kcmil</p> <p>1/0 AWG</p> <p>500 kcmil</p>
Tightening torque / at usage of copper-cables	
<ul style="list-style-type: none"> • multi-stranded • finely stranded 	<p><= 4/0 AWG: 140 lb-in, >= 250 kcmil: 250 lb-in</p> <p><= 4/0 AWG: 140 lb-in, >= 250 kcmil: 250 lb-in</p>

Certificates

EMC	Declaration of Conformity	other
-----	---------------------------	-------



[sonstig](#)

Further information

Information- and Downloadcenter (Catalogs, Brochures,...)

<http://www.siemens.com/lowvoltage/catalogs>

Industry Mall (Online ordering system)

<https://eb.automation.siemens.com/mall/en/WW/Catalog/Product/3VA9473-0JA13>

Service&Support (Manuals, Certificates, Characteristics, FAQs,...)

<http://support.automation.siemens.com/WW/view/en/3VA9473-0JA13/all>

Image database (product images, 2D dimension drawings, 3D models, device circuit diagrams, ...)

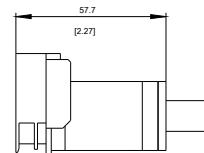
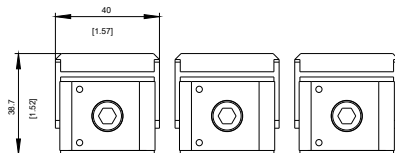
http://www.automation.siemens.com/bilddb/cax_en.aspx?mlfb=3VA9473-0JA13

CAX-Online-Generator

<http://www.siemens.com/cax>

Tender specifications

<http://www.siemens.com/specifications>



last modified:

11/25/2016