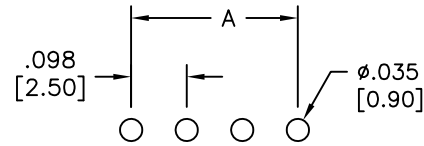
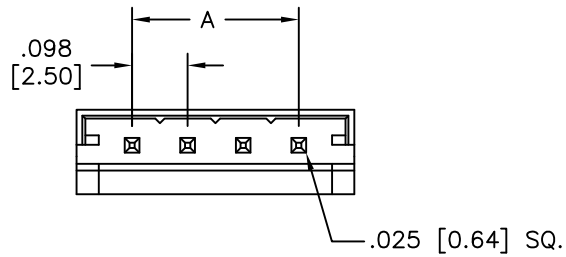


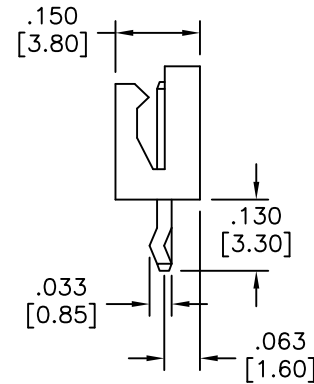
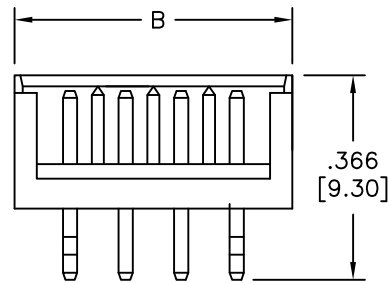
APPROVED: _____

DATE: _____ TITLE: _____

Rev	AWO #	Description	Date	Appr
-		RELEASED	9/19/05	
A		REDRAWN	4/16/10	
B		ADDED DIM.	12/1/15	AY/YC



RECOMMENDED PCB LAYOUT



SPECIFICATIONS:

Material:
 Insulator: Nylon, rated UL 94V-0
 Insulator color: Nature
 Contacts: Brass

Plating:
 Tin over Copper underplate overall

Electrical:
 Operating voltage: 250 VAC max
 Current rating: 3 Amps max
 Contact resistance: 10 mohms max
 Insulation resistance: 1000 Mohms min
 Dielectric withstanding voltage: 800 VAC for 1 minute

Temperature Rating:
 Operating temperature: -25°C to +85°C

Environmental:
 Lead free, RoHS compliant.



Positions: 2 thru 15

A= No. of Spaces x .098 [2.50]

B= No. of Positions x .098 [2.50] +.098 [2.50]

UNLESS OTHERWISE SPECIFIED
 ALL DIMENSIONS ARE INCHES [MM]
 TOLERANCES: EXCEPT AS NOTED
 INCHES HOLES
 .X ±.10 Ø.X ±.10
 .XX ±.020 Ø.XX ±.015
 .XXX ±.015 Ø.XXX ±.010

ADAM TECH

909 Rahway Avenue, Union, NJ 07083
 Phone: 908-687-5000 Fax: 908-687-5710

APPROVALS		DATE
DRAWN	SS	9/19/05
CHECKED		
APPROVED		

TITLE 2.5mm SHROUDED HEADER, SINGLE ROW, TIN PLATED		
SIZE X	PART NO. 25SH-C-XX-TS	REV. B
REF: S00016T	SCALE: NTS	SHEET 1 OF 1