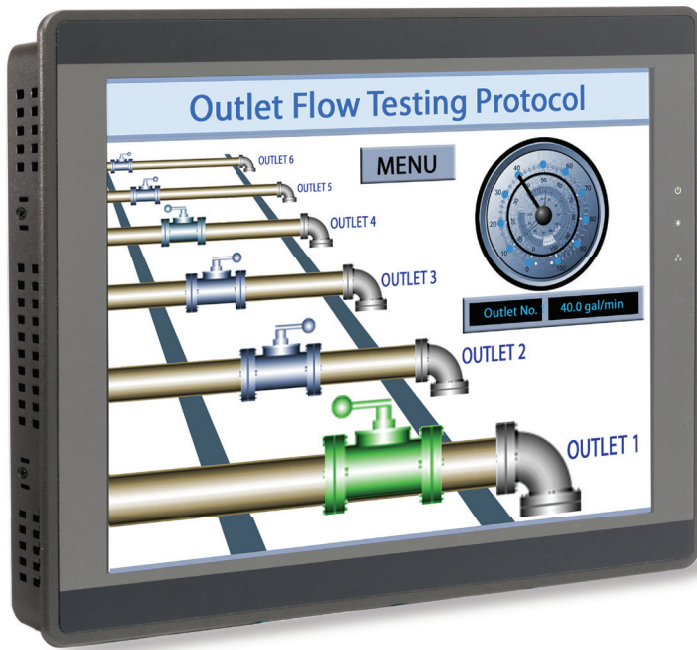


Graphic HMI



Display stunning high-definition graphics and video on this 15 inch High Speed Graphic HMI.

The Maple Systems HMI5150P is a rugged aluminum graphic operator interface with a high resolution 1024 x 768 pixel touchscreen display.

The HMI5150P has a high speed 800MHz microprocessor and large memory for complex and graphic intensive projects.

You program your HMI5150P with EZwarePlus configuration software. EZwarePlus gives you the capability to design and customize your application the way you want it. The extensive features of the software include alarm management, event email notification,

batch recipes, data logging, BACnet for building automation and control networks and much more - all making your operator interface a more integral part of your automation control system.



The nominal depth makes mounting in tight spots easy. The fanless design requires no extra space for cooling.

HMI5150P



15" High Speed Graphic

- Aluminum enclosure
- 1024 x 768 pixel TFT display
- Industrial grade LCD
- Bright 16.2M colors
- Longer life LED backlight
- Analog resistive touchscreen
- 32 bit RISC CPU, 800 MHz
- 256 MB Flash, 256 MB DRAM
- Built-in Ethernet, 2 serial ports, CANbus
- 1 USB host port, 1 USB client port
- 1 SD card slot
- 2 Video inputs
- Isolated power supply

Maple Systems stands behind your HMI product with complimentary technical support, an online support center, and numerous online instructional videos.

Every Machine
Needs the
Human Touch



www.maplesystems.com

HMI5150P Specifications

Hardware

CPU Type	32-bit RISC 800MHz
Memory	256MB Flash, 256MB RAM
SD Card Slot	Yes
Ethernet Ports	10/100 Base-T (RJ45)
Serial Ports	Com1: RS-232/RS-485, 2 or 4 wire Com3: RS-232/RS-485, 2 wire
CANbus	Yes
USB Ports	1 host 2.0 port, 1 client 2.0 port
Audio	Line Out
Video	NTSC/PAL RCA x 2 (V2 only)
RTC	Built-in

Display

Type	15.0" TFT color
Size (WxH)	12.00 x 9.06 inches [305 x 230 mm] 15.0" diagonal
Resolution (pixels)	1024 x 768
Brightness (cd/m ²)	350
Contrast Ratio	700:1
Max Colors	16.2M
Viewing Angle (°)	95/95/120/120 (T,B,R,L)
Backlight	LED
Backlight Longevity	50,000 hrs

Specifications subject to change without notice.

Touchscreen

Type	4-wire analog resistive
Resolution	Continuous
Light Transmission	Above 80%
Lifespan	1 million activations minimum

Environmental

Operating Temperature	32 ~ 122°F (0 ~ 50°C)
Storage Temperature	-4 ~ 158°F (-20 ~ 70°C)
Relative Humidity	10% ~ 90% (non-condensing)
Shock (operation)	10 to 25Hz (X,Y,Z direction, 2G, 30 minutes)
Ratings	IP65, NEMA 4X compliant front panel
Certifications	CE, cULus, RoHS

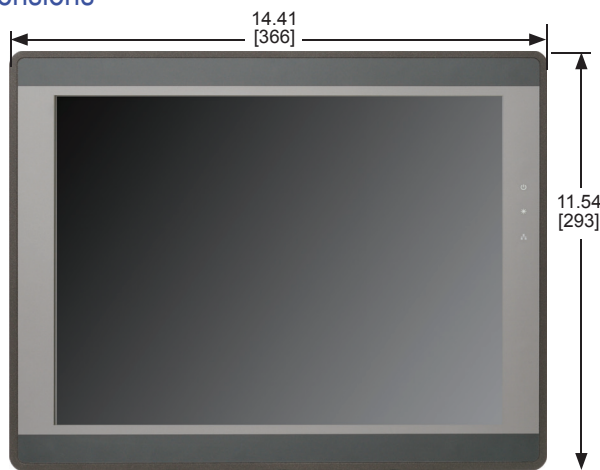
Mechanical

Enclosure	Aluminum
Dimensions (WxHxD)	14.41 x 11.54 x 2.24 inches [366 x 293 x 57 mm]
Panel Cutout Dim. (WxH)	13.86 x 10.98 inches [352 x 279 mm]
Weight	6.4 lbs [2.9 kg]
Mounting	Panel mount or VESA 75 compatible
Power Requirements	24VDC, 900mA maximum
Warranty	2 years

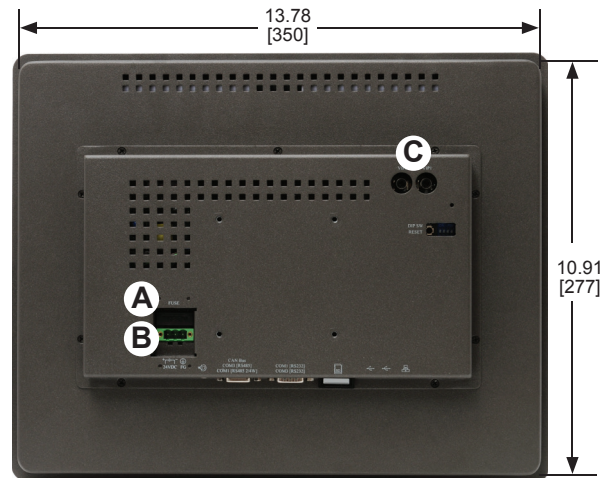
Order Number

HMI5150P	15.0" TFT Graphic HMI
----------	-----------------------

Dimensions



Front View



Rear View



Bottom View

- A Fuse
- B Power connector
- C VIP1 & VIP2
- E USB Host & Client Port
- F Ethernet Port 10/100
- G Serial Port
- H Serial Port
- I SD Card Slot
- J Audio

Dimensions in inches [mm]

Maple Systems, Inc.

808 134th St SW, Suite 120, Everett, WA 98204

425.745.3229 • 425.745.3429 (fax) • Email: maple@maplesystems.com • www.maplesystems.com