



[All Series](#) > [Series 45](#) > Part No. 45-190H.2000.111.401

Part No. 45-190H.2000.111.401, Keylock switch

[Request Information](#)

[Printable Page](#)

[Download PDF](#)

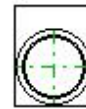
[Email This Page](#)



3D CAD DRAWING

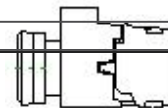


[3D](#)



[Front View](#)

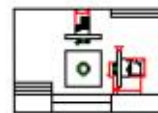
45-190H.2000.111.401



[2D Right Side View](#)



[2D Top View](#)



[2D Sales Drawing](#)

[Specifications](#) | [Bill of Materials](#)

Specifications

Actuator	Keylock switch
Lens Colour	None

Function	2 Pos., maint., key release L/R (KL-KR)
Housing Material	Metal
Shape of Handle or Frontring	None
Lock System	RONIS
Key	T254
Key Type	Standard Lock: Ronis T254
Switching Angle	90 Grad (V-Pos)
Contacts	1NO
Terminal	Spring-loaded terminal
Voltage Illumination	None
Mounting Type	Front mounting
Mounting Style	Holder
Environmental Rating	IP66, IP67, IP69K
Industry Standards/Certifications	UL, CSA, VDE, CCC, CE, RoHS
Switching Function	On-Off
Illumination	None
Contact Material	Silver
Termination Style	Spring type
Mechanical Life	1'000'000 switching cycles
AC Voltage	500 V
DC Voltage	500 V
Switching Current	10 A

Bill of Materials

Actuator	45-290H.2000.111

Holder	45-2300.2000.000
Switch Element 1	45-311.1Z40