



[All Series](#) > [Series 45](#) > Part No. 45-1828.2C90.001.105

Part No. 45-1828.2C90.001.105, Selector switch

[Request Information](#)

[Printable Page](#)

[Download PDF](#)

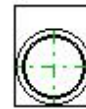
[Email This Page](#)



[2D CAD DRAWING](#)

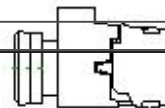


[3D](#)



[Front View](#)

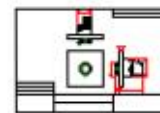
45-1828.2C90.001.105



[2D Right Side View](#)



[2D Top View](#)



[2D Sales Drawing](#)

[Specifications](#) | [Bill of Materials](#)

Specifications

Actuator	Selector switch
Lens Colour	White

Function	2 Pos., maint. (L-R)
Housing Material	Metal
Shape of Handle or Frontring	Short handle
Lock System	None
Key	None
Key Type	None
Switching Angle	90 Grad (V-Pos)
Contacts	1NO, 1NC
Terminal	Screw terminal
Voltage Illumination	None
Mounting Type	Front mounting
Mounting Style	Holder
Environmental Rating	IP66, IP67, IP69K
Industry Standards/Certifications	UL, CSA, VDE, CCC, CE, RoHS
Switching Function	On-Off
Illumination	None
Contact Material	Silver
Termination Style	Screw
Mechanical Life	1'000'000 switching cycles
AC Voltage	500 V
DC Voltage	500 V
Switching Current	10 A

Bill of Materials

Actuator	45-2828.2C90.001

Holder	45-2300.2000.000
Switch Element 1	45-315.1Z10