

# WIRE ROUTING, CLIPS & CLAMPS

## SLCS

### Stand-Off Lock Clip



• UL #E71558

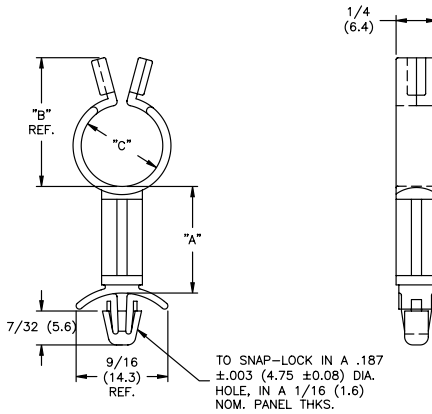


#### Features

- Lifts wires off board to avoid hot components
- Twist to lock; twist to open

#### PART NUMBER ORDER CODE

SLCS	500	-	8	-	01
Part No.	Size	Ht. Suffix	Material		



Color: Natural	
Suffix	"A" ±.015 (0.4)
-3	3/16 (4.8)
-4	1/4 (6.4)
-6	3/8 (9.5)
-8	1/2 (12.7)
-10	5/8 (15.9)
-12	3/4 (19.1)
-14	7/8 (22.2)
-16	1 (25.4)

Material: Nylon 6/6, RMS-01 • Color: Natural		
Part No.	Standard Pack: 1000 per bag	
	"B"	Max Bundle Dia. "C" Locked
SLCS-250-A-01	.53 (13.5)	3/16 (4.8)
SLCS-370-A-01	.66 (16.8)	5/16 (7.9)
SLCS-500-A-01	.79 (20.1)	7/16 (11.1)
SLCS-750-A-01	1.04 (26.4)	11/16 (17.5)

Flame Retardant Nylon, RMS-19 available by special order. To order, replace -01 with -19.

## SLCSE/SLCSE2

### Stand-Off Lock Clip



• UL #E71558

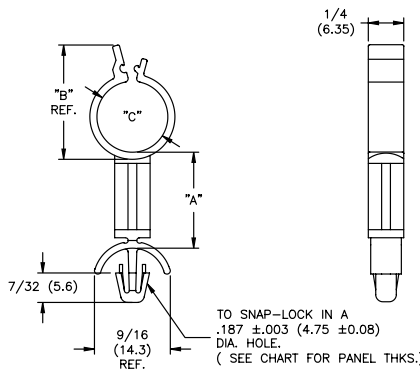


#### Features

- Lifts wires off board to avoid hot components
- Press to lock; twist to open

#### PART NUMBER ORDER CODE

SLCSE	500	-	8	-	01
Part No.	Size	Ht. Suffix	Material		



Color: Natural	
Suffix (A)	"A" ±.015 (0.4)
-3	3/16 (4.8)
-4	1/4 (6.4)
-6	3/8 (9.5)
-8	1/2 (12.7)
-10	5/8 (15.9)
-12	3/4 (19.1)
-14	7/8 (22.2)
-16	1 (25.4)

Material: Nylon 6/6, RMS-01 • Color: Natural			
Part No.	"B"	Standard Pack: 1000 per bag	
		Board Thickness Range	Max. Bundle Dia. "C" Locked
SLCSE-250-A-01	.57 (14.5)	.031 (0.8) - .078 (2.0)	.22 (5.6)
SLCSE-370-A-01	.71 (18.0)		.35 (8.9)
SLCSE-500-A-01	.83 (21.1)		.47 (11.9)
SLCSE-750-A-01	1.08 (27.4)	.078 (2.0) - .160 (4.0)	.73 (18.5)
SLCSE2-250-A-01	.57 (14.5)		.22 (5.6)
SLCSE2-370-A-01	.71 (18.0)		.35 (8.9)
SLCSE2-500-A-01	.83 (21.1)		.47 (11.9)
SLCSE2-750-A-01	1.08 (27.4)		.73 (18.5)

Flame Retardant Nylon, RMS-19 available by special order. To order, replace -01 with -19.