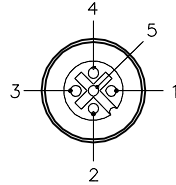


CONNECTORS J1-J8



- 1 = VOLT (+)
- 2 = SIGNAL 2
- 3 = VOLT (-)
- 4 = SIGNAL 1
- 5 = GROUND



SPECIFICATIONS

CABLE DATA

JACKET MATERIAL/COLOR	TPU/YELLOW
NUMBER OF CONDUCTORS [AWG]	3X18 AWG, 16X22 AWG
DRAIN/SHIELD	20 AWG/POLYESTER FOIL SHIELD

MATERIAL

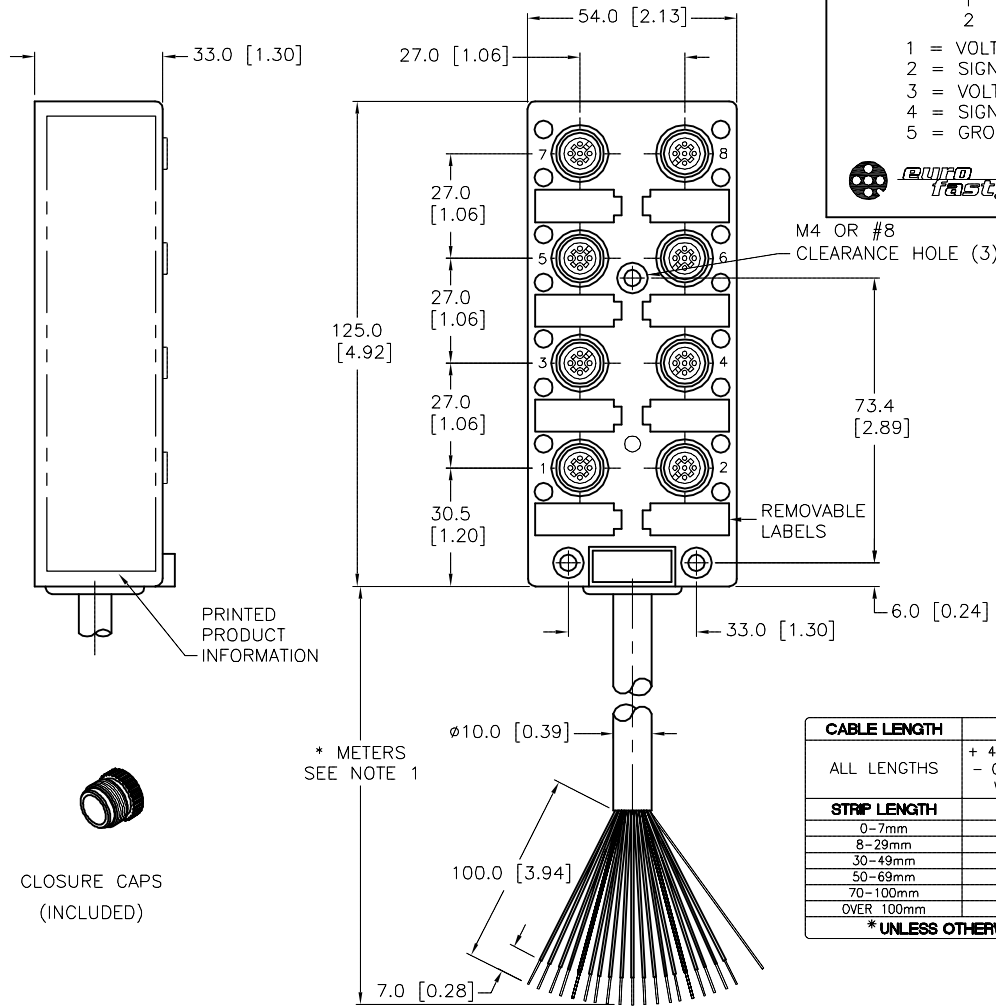
HOUSING	NYLON/YELLOW
CONTACT CARRIERS	NYLON OR TPU
CONTACTS/PLATING	BRASS/GOLD
SEALING O-RING	FKM/FPM
DISCONNECT/PLATING	NICKEL/BRASS

ELECTRICAL DATA

OPERATING VOLTAGE	10-30 VDC
MAXIMUM CURRENT	3 AMPS PER PORT, 8 AMPS TOTAL

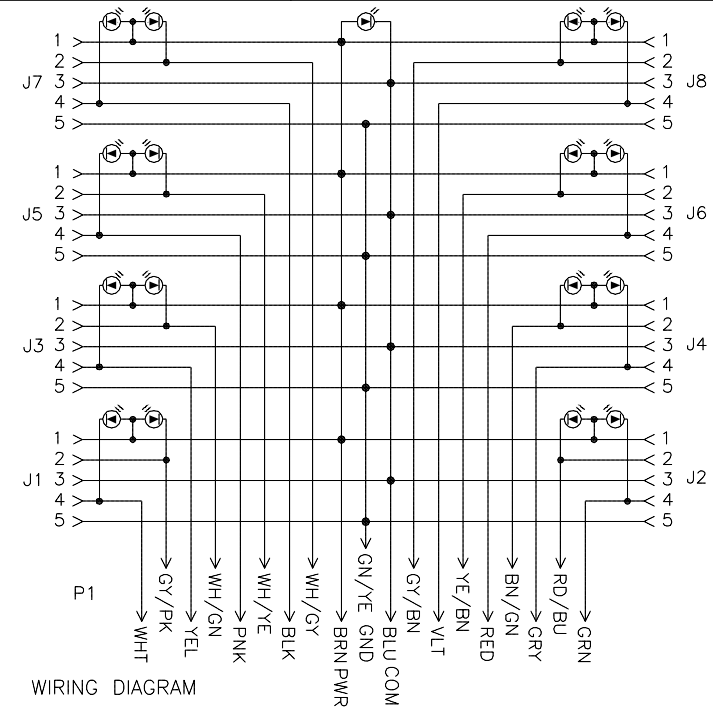
MECHANICAL DATA

PROTECTION CLASS	IP 67 ONLY WHEN ALL RECEPTACLES ARE COVERED WITH PLUGS OR CONNECTED
OPERATING TEMPERATURE	-40°C to +90°C (-40°F to +194°F)



CABLE LENGTH	TOLERANCE *
ALL LENGTHS	+ 4% (OR 50mm) OF LENGTH - 0% (OR 0mm) OF LENGTH WHICHEVER IS GREATER
STRIP LENGTH	TOLERANCE *
0-7mm	±0.5mm
8-29mm	±1.0mm
30-49mm	±2.0mm
50-69mm	±3.0mm
70-100mm	±4.0mm
OVER 100mm	±5.0mm

* UNLESS OTHERWISE SPECIFIED



SOURCE DRAWING - FOR REFERENCE ONLY

NOTES:

- "*" INDICATES CABLE LENGTH IN METERS. CONTACT TURCK TO ORDER SPECIFIC LENGTHS.
- "/S90" DESIGNATES TPU (POLYURETHANE) CABLE JACKET.

RELATED DOCUMENTS 1. 2. 3. 4.	3RD ANGLE PROJECTION 	THIS DRAWING IS CONFIDENTIAL AND THE PROPERTY OF TURCK INC. USE OF THIS DOCUMENT WITHOUT WRITTEN PERMISSION IS PROHIBITED.		3000 CAMPUS DRIVE MINNEAPOLIS, MN 55441 1-800-544-7769 (763) 553-7300 (763) 553-0708 fax www.turck.us	
	MATERIAL SEE SPECIFICATIONS	DRFT RDS APVD	DATE 10/31/07 SCALE 1=2	DESCRIPTION VB 80.5-N7X17-*/S90	
FINISH SEE SPECIFICATIONS	ALL DIMENSIONS DISPLAYED ON THIS DRAWING ARE FOR REFERENCE ONLY	UNIT OF MEASUREMENT MILLIMETER [INCH]		IDENTIFICATION NO.	REV F
F REV	UPDATED SEALING RING MATERIAL PER ECO DESCRIPTION	TV BY	08/10/16 DATE	56141 ECO NO.	DO NOT SCALE THIS DRAWING FILE: 777000461 SHEET 1 OF 1