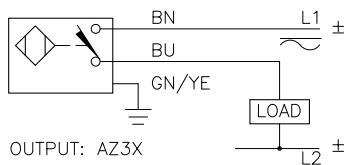
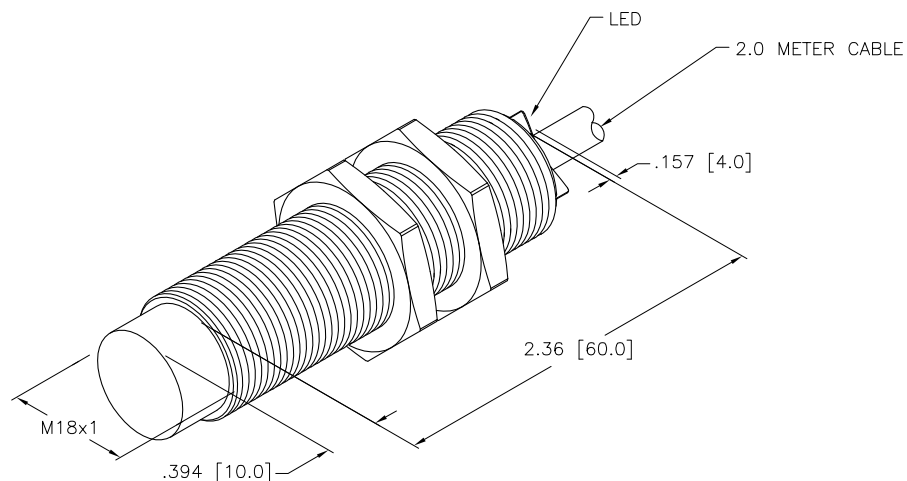


## WIRING DIAGRAM



NO SHORT-CIRCUIT PROTECTION.  
ALWAYS WIRE A LOAD IN SERIES WITH THE SENSOR.



## SPECIFICATIONS

OPERATING VOLTAGE	20–250 VAC, 10–300 VDC
LINE FREQUENCY	40–60 Hz
DIFFERENTIAL TRAVEL (HYSTERESIS)	3–15% (5% TYPICAL)
VOLTAGE DROP ACROSS CONDUCTING SENSOR	<7.0 V at FULL RATED CURRENT
OUTPUT FUNCTION	NORMALLY OPEN 2-WIRE AC/DC
SHORT-CIRCUIT PROTECTED	NO
CONTINUOUS LOAD CURRENT	AC: ≤400 mA; DC: ≤300 mA
OFF-STATE (LEAKAGE) CURRENT	<1.7 mA
MINIMUM LOAD CURRENT	≥ 5.0 mA
INRUSH CURRENT	≤ 8.0 A (≤10 ms, 5% DUTY CYCLE)
TIME DELAY BEFORE AVAILABILITY	≤ 25 ms
POWER-ON EFFECT	Per IEC 947–5–2
TRANSIENT PROTECTION	Per EN 60947–5–2
OPERATING TEMPERATURE	–25°C to +70°C (–13°F to +158°F)
ENCLOSURE	MEETS NEMA 1, 3, 4, 6, 13 AND IEC IP67
SHOCK	30 g, 11 ms
VIBRATION	55 Hz, 1 mm AMPLITUDE (IN ALL 3 PLANES)
LED FUNCTION	RED: OUTPUT ENERGIZED
RATED OPERATING DISTANCE(Sn)	10 mm = .394" (NOMINAL)
SWITCHING FREQUENCY	20 Hz
REPEATABILITY	≤ 2% OF RATED OPERATING DISTANCE
EMBEDDABLE (SHIELDED)	NO
LOCKNUT M18x1	24.0 mm AF, 27.5 mm AC, 4.0 mm THK

SOURCE DRAWING - FOR REFERENCE ONLY

## NOTE:

- MATERIALS:  
BARREL – STAINLESS STEEL  
LOCKNUTS – STAINLESS STEEL  
SENSING FACE – PA12-GF30 PLASTIC  
END CAP – TPE-0 ELASTOMER
- "S1023" DESIGNATES WET/WASHDOWN APPLICATIONS. LENSED LEDS AND SERPENTINE FULLY POTTED INTERNAL CABLE.

RELATED DOCUMENTS		3RD ANGLE PROJECTION		<div>THIS DRAWING IS PROPERTY OF TURCK INC. USE OF THIS DOCUMENT WITHOUT WRITTEN PERMISSION IS PROHIBITED.</div> <div><b>TURCK INC</b></div> <div>High Technology Sensors and Automation Controls</div>		<div>3000 CAMPUS DRIVE MINNEAPOLIS, MN 55441 1-800-544-7769 (763) 553-7300 (763) 553-0708 fax turck.com</div>	
1. 2. 3. 4.							
MATERIAL		DRFT RDS		DATE 02/05/08		DESCRIPTION NI10-EG18-AZ3X/S1023	
SEE NOTES		DSGN SD		SCALE 1=1.0			
FINISH		UNIT OF MEASUREMENT <b>INCH [ MILLIMETER ]</b>		IDENTIFICATION NO. T4330589		REV B	
CONTACT TURCK FOR MORE INFORMATION							
		DO NOT SCALE THIS DRAWING		FILE: T4330589		SHEET 1 OF 1	

B	UPDATE LENGTH FROM 70MM TO 60MM, SEE ECO	RWC	02/12/10	30002
REV	DESCRIPTION	BY	DATE	ECO NO.