

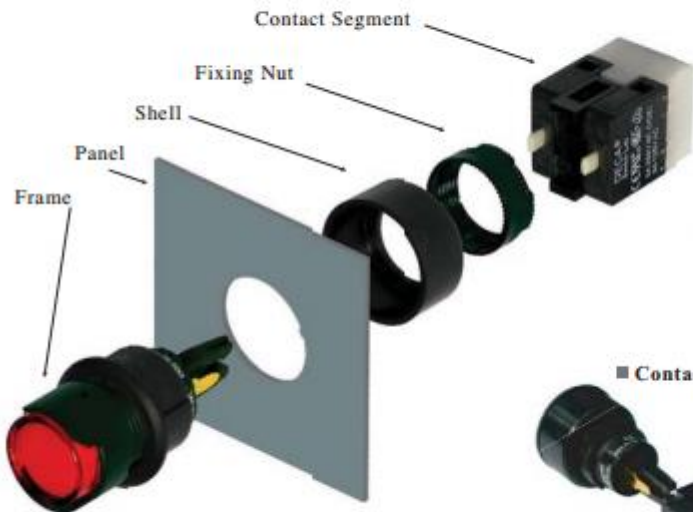
Datasheet

IP65 Panel Mount Alternate Illuminated Push Button Switch, 8 A

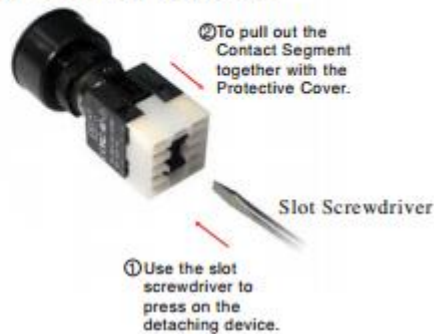
RS Stock 745-2449



CONFIGURATION



■ Detachment of the Contact Assembly



■ Contact Assembly



■ Protective Cover is detachable

Hook of the Protective Cover





Specifications

- Electrical Lifetime: 50,000 operations min
- Electric Rating: 250V AC (VDE) 125V AC 8A
- Max. insulation voltage: 2000V 60HZ 1min. Between all terminals and ground
- Motion Tolerance: <60 operation/min
- Insulation Resistance: >50 Mega- ohms
- Contact Material: Silver
- Storage Temperature: -40°C to +70°C
- Operating Temperature: -25°C to +55°C