



ENGLISH

## Datasheet

Stock No: 689-417

# RS Pro Steel M8 Ball & Socket Joint, 39.5mm x 38mm



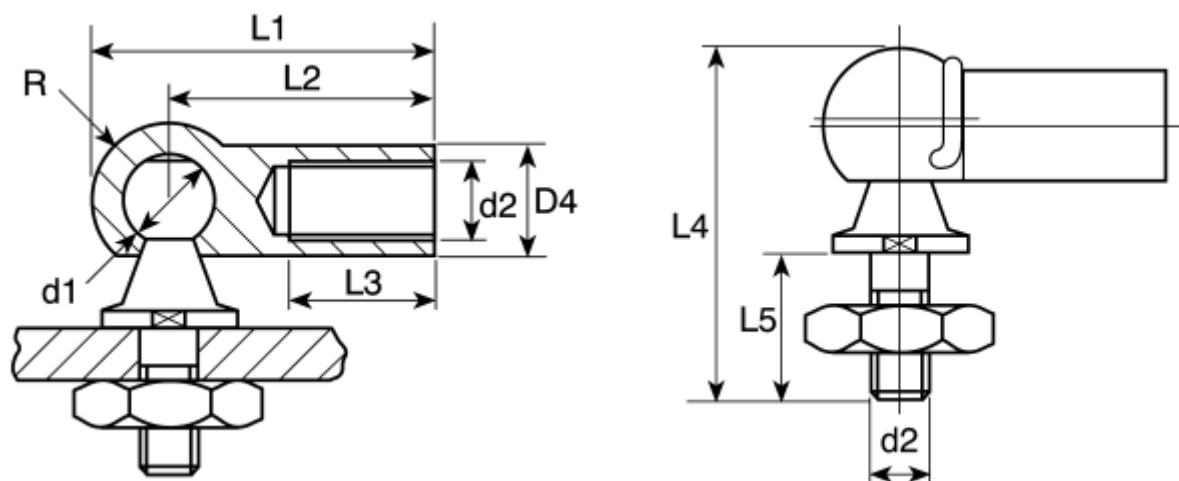
## Product Details

### Ball and Socket Joints

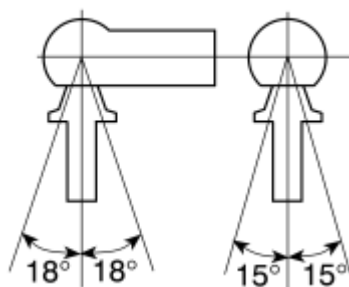
Made to DIN71802 with zinc passivated finish  
Induction hardened balls are wear resistant  
Security clips retain ball studs in sockets  
Static pull values for radial and axial loads  
Supplied with locknut

## Specifications:

Accessory Type	Ball & Socket Joint
Rod Connection Thread	M8
Ball Diameter	13mm
Overall Length	39.5mm
Overall Width	38mm
Material	Steel
Finish	Zinc Passivated



Working angles



### Specifications:

Dimensions (mm)											
Size mm	D1	D2	D4	L1	L2	L3	L4	L5	R	A/F	min.pull-off force in N
5	8	M5	8	28.5	22	10.5	25	10.2	10.2	6.4	30
6	10	M6	10	32.5	25	11.5	30	12.5	7.5	8	40
8	13	M8	13	39.5	30	14.0	38	16.5	9.7	11	60
10	16	M10	16	47.0	35	15.5	47.5	20.0	12.0	13	80