

Toughened Nut Sensor SNS10

Features

- For heavy duty applications with sensor tip radial loads up to 40 lbs.
- For use in weld applications
- Immune to weld fields
- Resistant to weld slag
- Can be used to detect thread presence
- Minimum nut thickness is 8.0 mm (.31")
- Maximum blank thickness is 2.5mm (.10")



Technical Data

Sensor connector:

4-pin (male) 12mm (micro) connector

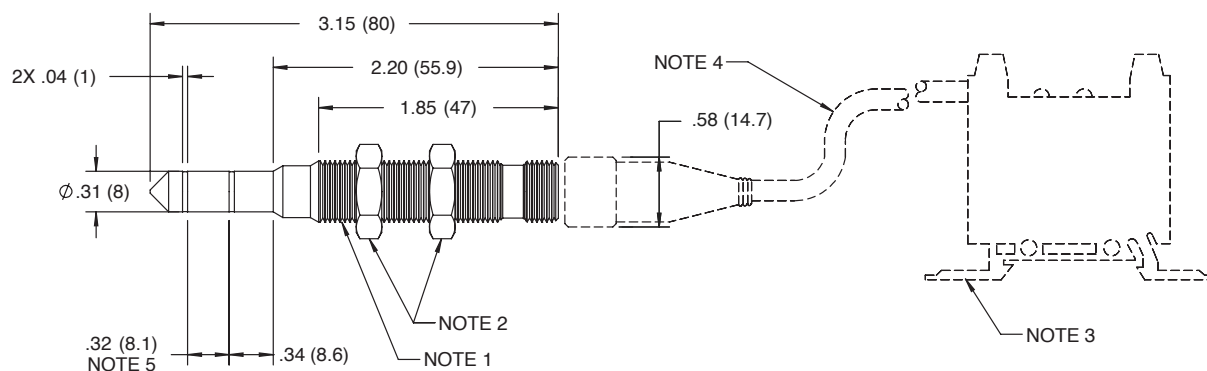
Operating temperature range:

32°F to 212°F (0°C to 100°C)

Target material:

Ferrous/Non-Ferrous

Dimensions in. (mm)



Note 1	2X M12X 1.0
Note 2	2X M12 JAM NUTS
Note 3	SOLD SEPERATELY
Note 4	SOLD SEPERATELY
Note 5	SENSING AREA

M10 Nut Detector System

Sensor	Monitor	Cable	Weight
SNS10	SMH36010 (NPN)	SCF12060 2m (6ft)	.082 lbs / 37 gm
	SMH37010 (PNP)	SCF12160 2m (6ft) (Angled)	



SEE ENGINEERING ADVANTAGE

Scan with a QR code reader – www.norgren.com/automationsolutions
Tel: 734-429-4989