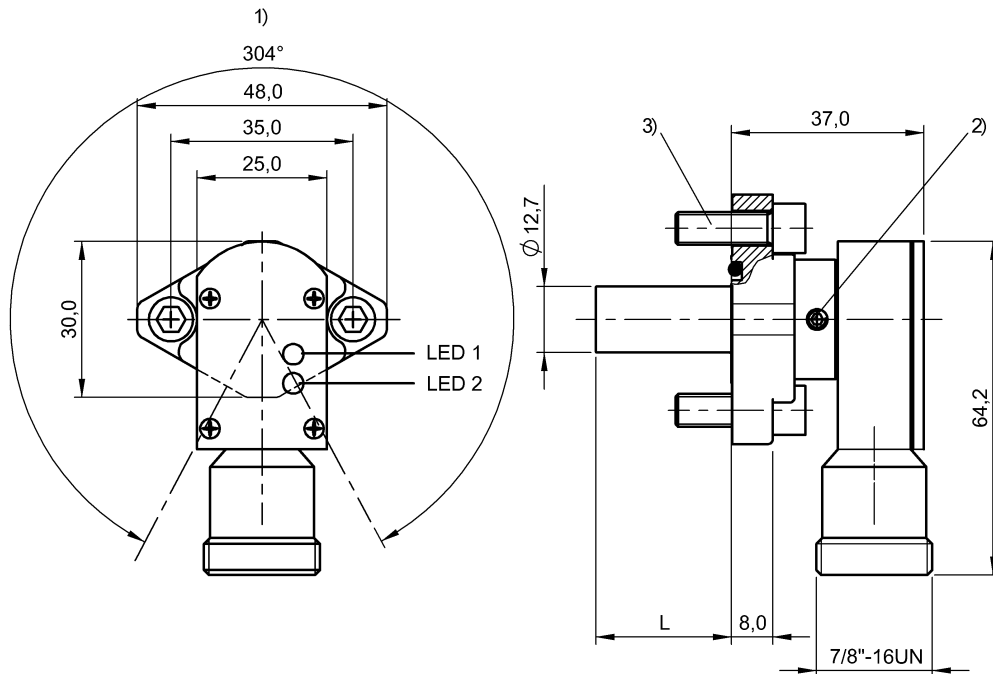


BES 516-200-S2/1.225"-S5
BHS0007



1) Housing rotatable 304° 2) Tightening torque 1...1.5 Nm 3) Tightening torque 16.5 Nm



Display/Operation

Function indicator	yes
Power indicator	yes

Electrical connection

Connection	7/8"-16 UN-Connector
Polarity reversal protected	yes
Short-circuit protection	yes

Electrical data

Hysteresis H max. (% of Sr)	15.0 %
Magnetic field strength, interference field	100 kA/m
Operating voltage U_b	20...250 VDC/20...250 VAC
Pollution degree	3
Rated insulation voltage U_i	250 V AC
Rated operating current I_e DC	500 mA
Rated operating voltage U_e AC	110 V
Rated short circuit current	100 A
Ready delay t_v max.	150 ms
Repeat accuracy max. (% of Sr)	5.0 %
Residual current I_r max.	1700 μ A

Switching frequency	50 Hz
Utilization category	AC-140 DC -13
Voltage drop static max.	6 V

Environmental conditions

Ambient temperature	-25...70 °C
Magnetic field immune	magnetic field immune (AC/DC)
Protection class	I
Protection type IEC 60529	IP67

General data

Approval/Conformity	CE cULus EAC
Basic standard	IEC 60947-5-2
Scope of delivery	O-ring $\varnothing 17.13 \times 2.62$ Allen wrench UNC 1/4"- 20x3/4"- 12.9 (2x)
Trademark	Strokemaster

Material

Gasket, material	FPM 90
------------------	--------

BES 516-200-S2/1.225"-S5 BHS0007

Housing material	Stainless steel (1.4104) Zinc, Die casting
Material sensing surface	Ceramic
Surface protection	nickel plates

Mechanical data

Dimension	64.2 x 48 x 31.125 mm
Installation	for flush mounting
Length, tolerance	±0.005 in
Pressure rating max.	207 bar
Pressure rating, note	Pressure-resistant
Sealing ring, part number	116143
Sealing ring, size	17.13 x 2.62 mm
Size	D12.7

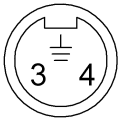
Range/Distance

Assured operating distance Sa	1.6 mm
Range	2 mm
Rated operating distance Sn	2 mm
Temperature drift max. (% of Sr)	10 %

Remarks

Leakage current I_r max. at rated operating voltage U_e AC 110 V
 LED 1: Operating voltage
 LED 2: Function
 Flashing LED indicates overload. Once the overload has been eliminated, interrupt operating voltage V_s for approx. 2 sec.
 To meet the UL requirements, the device should be used together with an external connection cable (type CYJV/7) min. temp. 95°C.

Connector view



Wiring Diagram

