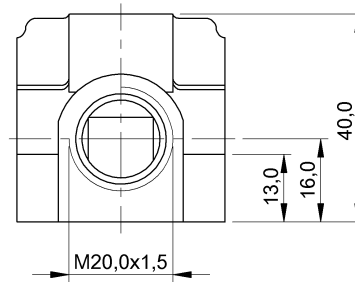
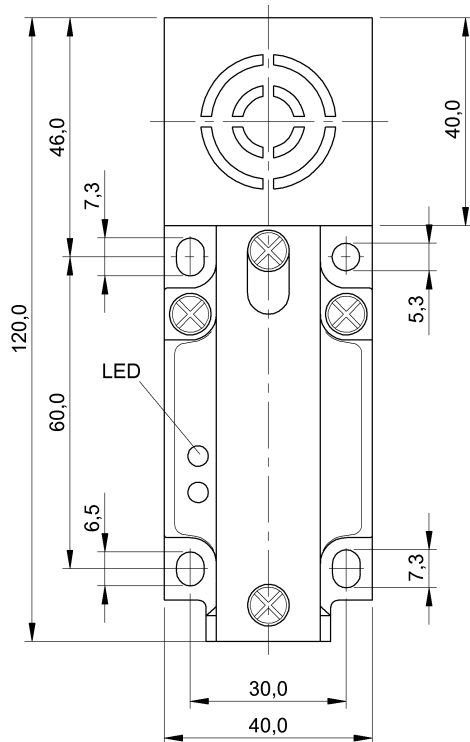


BES 517-223-M5-E BES023Y



IND. CONT. EQ
8102
Environmental -
Type 1 Enclosure

Display/Operation

Function indicator	yes
Power indicator	no

Electrical connection

Polarity reversal protected	yes
Short-circuit protection	yes

Electrical data

Hysteresis H max. (% of Sr)	20.0 %
Operating voltage U_b	20...250 VDC/20...250 VAC
Pollution degree	3
Rated insulation voltage U_i	250 V AC
Rated operating current I_e DC	250 mA
Rated operating voltage U_e AC	110 V
Rated short circuit current	100 A
Ready delay t_v max.	200 ms
Repeat accuracy max. (% of Sr)	5.0 %
Residual current I_r max.	1700 μ A
Switching frequency	100 Hz
Utilization category	AC-140 DC -13
Voltage drop static max.	11.5 V

Environmental conditions

Ambient temperature	-25...70 °C
Protection class	II
Protection type IEC 60529	IP67

General data

Approval/Conformity	cULus CE EAC
Basic standard	IEC 60947-5-2

Material

Housing material	PBT
Material sensing surface	PBT

Mechanical data

Connection cross-section	2.5 mm ²
Dimension	120 x 40 x 40 mm
Installation	non-flush
Tightening torque clamping screw	0.8 Nm

BES 517-223-M5-E BES023Y

Output/Interface

Cable fitting, thread size M20x1.5

Range/Distance

Assured operating distance Sa 24 mm
Range 30 mm
Rated operating distance Sn 30 mm
Temperature drift max. (% of Sr) 10 %

Remarks

Once the overload has been eliminated, interrupt operating voltage V_s for approx. 2 sec.
Programming of the switching function using internal switch: Position 1: NO (default)
Position 2: NC
 $T_a \geq 25\text{ °C} \dots \leq 70\text{ °C}$: $I_e = 250 - 1.6 \times (T_a - 25)$
NO/NC programmable.

Wiring Diagram

