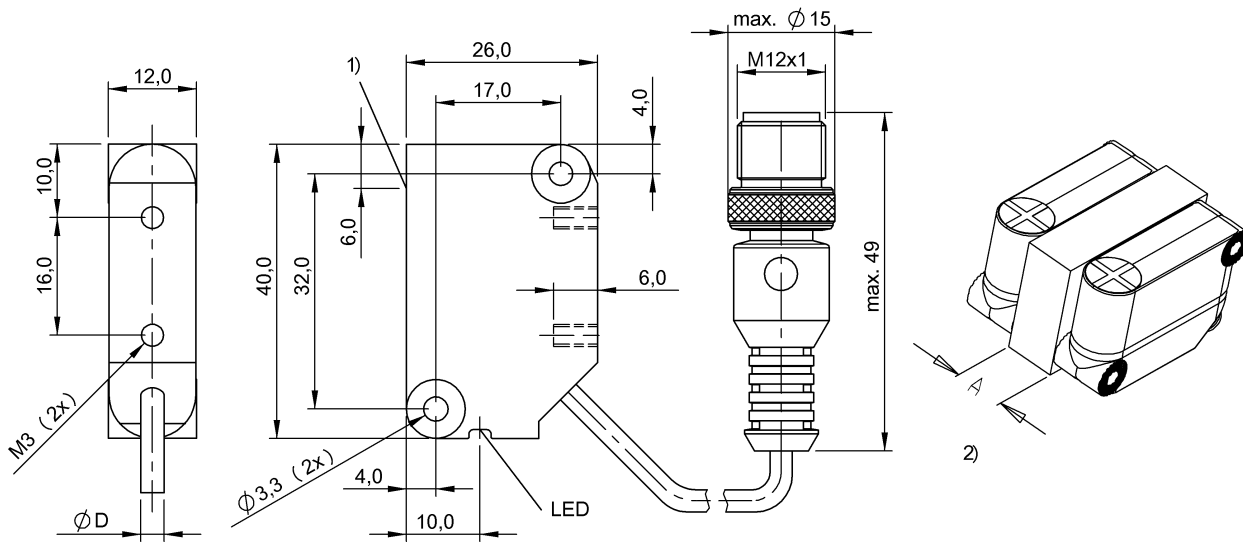


BES R05KB-PSC40B-EP00,3-GS04 BES01Z8



1) Sensing surface Ø8 2) see remarks



IND. CONT. EQ
8TU2
for use in the secondary of
a class 2 source of supply
Environmental - Type 1 Enclosure



Display/Operation

Function indicator	yes
Power indicator	no

Electrical connection

Cable diameter D	4.70 mm
Cable length	0.3 m
Connection	M12x1-Connector, 4-pole, A-coded
Connection type	Cable with connector, 0.30 m, PUR
Polarity reversal protected	yes
Short-circuit protection	yes

Electrical data

Hysteresis H max. (% of Sr)	15.0 %
Load capacitance max. at Ue	1 µF
No-load current I ₀ max., undamped	4 mA
Operating voltage U _b	10...30 VDC
Output resistance R _a	33.0 kOhm + D
Pollution degree	3
Protected against miswiring	yes
Rated insulation voltage U _i	250 V AC
Rated operating current I _e DC	200 mA
Rated operating voltage U _e DC	24 V
Rated short circuit current	100 A
Ready delay t _v max.	10 ms
Repeat accuracy max. (% of Sr)	5.0 %
Residual current I _r max.	80 µA
Switching frequency	400 Hz
Utilization category	DC -13

Environmental conditions

Ambient temperature	-25...70 °C
Protection class	II
Protection type IEC 60529	IP67

General data

Approval/Conformity	CE cULus EAC
Basic standard	IEC 60947-5-2

Material

Housing material	PA, PA 12
Material jacket	PUR
Material sensing surface	PA 12

Mechanical data

Dimension	40 x 12 x 26 mm
Installation	for flush mounting
Tightening torque	0.25 Nm

Output/Interface

Switching output	PNP Normally open (NO)
------------------	------------------------

Range/Distance

Assured operating distance S _a	3.2 mm
Range	4 mm
Rated operating distance S _n	4 mm

BES R05KB-PSC40B-EP00,3-GS04 BES01Z8

Ripple max. (% of Ue)	15 %
Temperature drift max. (% of Sr)	10 %

Remarks

2) Distance A: with air or non-metallic materials = min. 17 mm
with metal = min. 12 mm.
The sensor is functional again after the overload has been eliminated.

Connector view



Wiring Diagram

