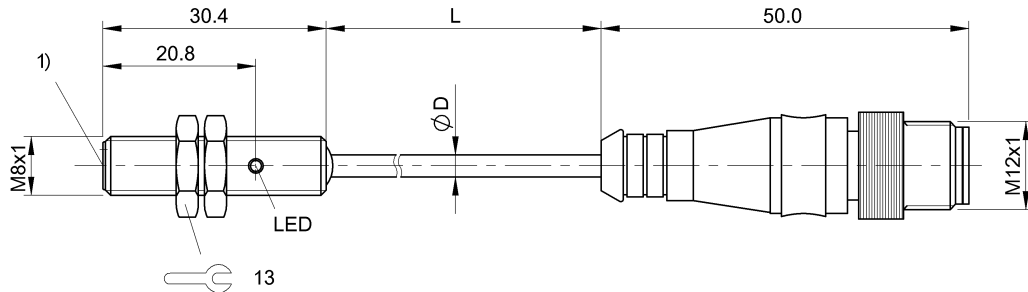


BES M08EE-PSH15B-EP01,5-GS04 BES01P4



1) Sensing surface



Display/Operation

Function indicator	yes
Power indicator	no

Electrical connection

Cable diameter D	3.00 mm
Cable length	1.5 m
Connection	M12x1-Connector, 4-pole, A-coded
Connection type	Cable with connector, 1.50 m, PUR
Polarity reversal protected	yes
Short-circuit protection	yes

Electrical data

Hysteresis H max. (% of Sr)	15.0 %
Load capacitance max. at Ue	0.1 µF
MTTF (40 °C)	770 a
No-load current I ₀ max., undamped	7 mA
Operating voltage U _b	10...55 VDC
Output resistance R _a	Open collector
Pollution degree	3
Protected against miswiring	no
Rated insulation voltage U _i	75 V DC
Rated operating current I _e DC	200 mA
Rated operating voltage U _e DC	24 V
Rated short circuit current	100 A
Ready delay t _v max.	25 ms
Repeat accuracy max. (% of Sr)	5.0 %
Residual current I _r max.	50 µA
Switching frequency	5000 Hz
Utilization category	DC -13

Voltage drop static max. 2.5 V

Environmental conditions

Ambient temperature	-25...70 °C
Protection type IEC 60529	IP65

Functional safety

Diagnostic coverage	0 %
Functional safety	no
Mission Time	20 a

General data

Approval/Conformity	CE EAC
Basic standard	IEC 60947-5-2

Material

Housing material	Stainless steel
Material jacket	PUR
Material sensing surface	PBT

Mechanical data

Dimension	Ø 8 x 30 mm
Installation	for flush mounting
Size	M8x1
Tightening torque	6 Nm

BES M08EE-PSH15B-EP01,5-GS04 BES01P4

Temperature drift max. (% of Sr) 10 %

Output/Interface

Switching output PNP Normally open (NO)

Range/Distance

Assured operating distance Sa	1.2 mm
Range	1.5 mm
Rated operating distance Sn	1.5 mm
Ripple max. (% of Ue)	10 %

Remarks

The sensor is functional again after the overload has been eliminated.
EMC: Surge resistance
External protection circuit is required. Document 825345, Section 2.
 $T_a \geq 25 \text{ }^\circ\text{C} \dots \leq 70 \text{ }^\circ\text{C}$: $l_e = 200 - 1.1 \times (T_a - 25)$

For further information on MTTF/B10d, please refer to the MTTF / B10d Certificate.

Specification of the MTTF value and the B10d value do not represent any binding quality and/or life expectancy guarantees.

Connector view



Wiring Diagram

