

NEMA Motor Data



Ordering data : **1LE2221-2CB21-6AA3**

Client order no. :
 Order no. :
 Offer no. :
 Remarks :

Item no. :
 Consignment no. :
 Project :

Nameplate Data	Mounting and motor protection
----------------	-------------------------------

Type	GP100 - NEMA Premium Efficiency		
HP	30.0	Rating	Cont.
Voltage	(16) 230/460V, STD	Ins. Class	Class F (Standard)
Amps	70.0 / 35.0 A	S.F.	1.15
FL RPM	1775	Amb. Temp.	40 deg C
FL Efficiency	93.6 %	Temp. Rise	Class B
FRAME	286T	kVA Code	G
DE AFBMA	50BC03JP30	NEMA Des	B
ODE AFBMA	50BC02JPP30	Mtr WT	449.01
60 Hertz	3 Ph TEFC	IP	54

Type of construction	(A) Foot mounted - End shield
Motor protection	(A) No winding protection
Terminal box design	(3) Mounting - F-1

Bearing Data		
--------------	--	--

	DE	ODE
Bearing Size	6310 Z C3 S0	6210 ZZ C3 S0
Bearing Type	Ball Bearing	Ball Bearing
AFBMA	50BC03JP30	50BC02JPP30

Typical Performance Data					
--------------------------	--	--	--	--	--

Load	No Load	1/2	3/4	Full Load	LRC
Efficiency		93.9 %	94.1 %	93.6 %	
Power Factor		73.0	82.0	85.0	
Current (A)	12.0 A	20.5 A	27.3 A	70.0 / 35.0	218.0 A
Inverter Duty	VT	20:1	CT	4:1	

Mechanical Data				
-----------------	--	--	--	--

SAFE STALL TIME	HOT (s)	24	COLD (s)	44
Rtr wt (lbs)	110.51	Rtr WK2	4.83	
FLT (lb-ft)	89.000	LRT	180	BDT 251
Ext Load Inertia (WK2) Capability	105.0 lb-ft ²			

Typical Noise Data										
--------------------	--	--	--	--	--	--	--	--	--	--

A-weighted Sound	Octave Band Center Frequencies Hertz (Hz)									
Pressure Level	125	250	500	1000	2000	4000	8000	SPL	65	
at 3 feet	43	51	55	55	62	59	51	SPwrL	76	

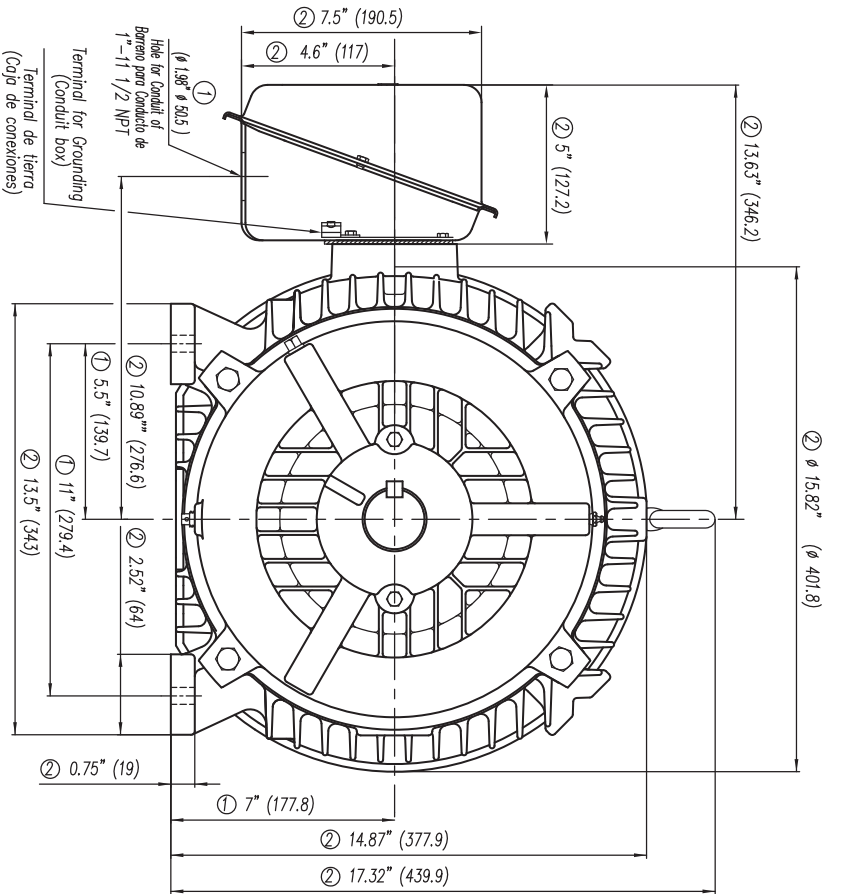
Wiring Connection Information					
-------------------------------	--	--	--	--	--

Description	3 PHASE - 9 LEAD - DELTA				
Voltage	L1	L2	L3	Connected together	
LOW	T1 T7 T6	T2 T8 T4	T3 T9 T5	-- -- --	
HIGH	T1	T2	T3	T4 T7-T5 T8-T6 T9	

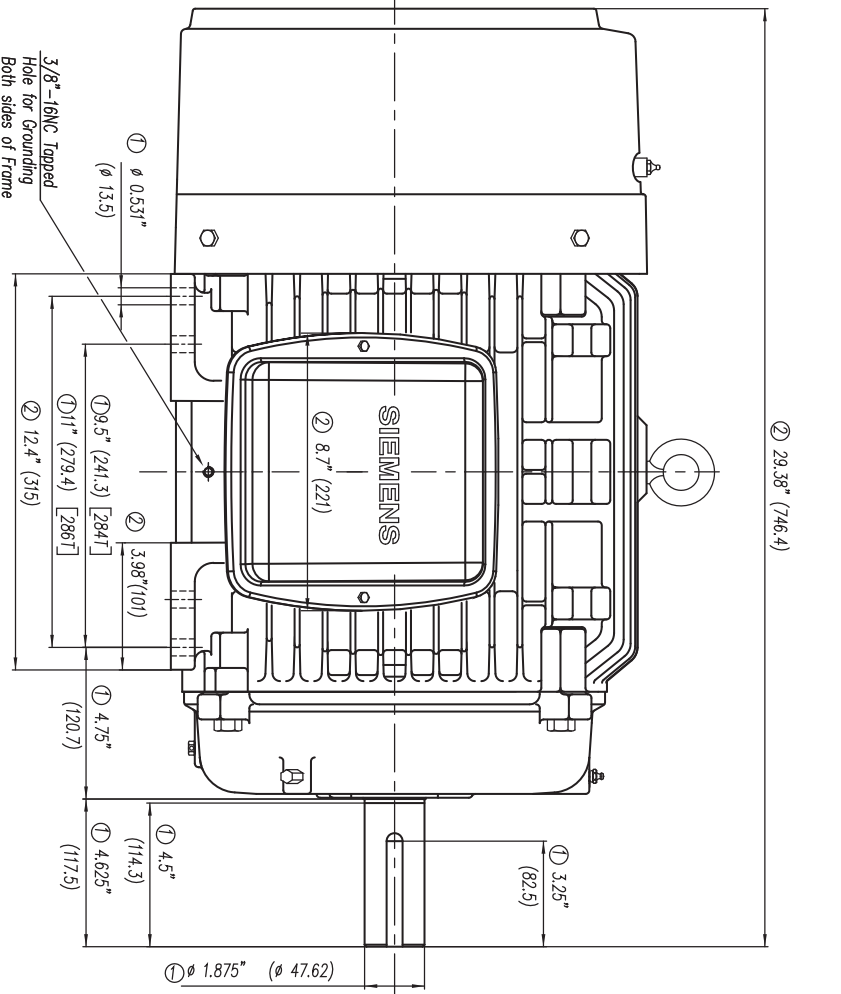
Special design :

Lubrication Information	
-------------------------	--

Manufacturer	Mobil Polyrex EM or equal
Type	Polyurea (standard)
DE Capacity (oz.)	2.60
ODEnd Capacity (oz.)	2.30



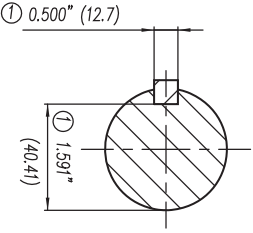
- ① Tolerances According to NEMA Std.
- ② All these dimensions corresponding to assemblies and castings shall have a tolerance as per DIN standard 1686-GTB-19.
- ③ Not According to NEMA Std.



②

CERTIFIED PRINT / CERTIFICACION

CUSTOMER/CLIENT		SUBORDER/CLIENTE	
PROJECT/COMPRA	DATE/FECHA	WEEKS	PAGES
REV	REV	REV	REV



Keyseat detail
 Detalle Cuiñero

Tol. in mm, acc. to/Tol. en mm, según DIN-1686-GTB-19		European Projection/Proyeccion Europea	
Over/desde To/hasta	± 4.5	Modific.	
18	± 4.7	Date/Fecha 08/04/10	
30	± 5	Draw/Elab. A. Perez	
50	± 5.5	Check/Rev. 08/04/10	
80	± 6	Std.Cdd./Aut. A. Reul	
120	± 6.5	Outline/Dimensiones	
180	± 7	Long Shaft/ Espiga Larga	
250	± 7.5	Type/ GP100 mNP FRAME/ARM. 284/286T 2..8. Pol.	
315	± 8	Type/ GP100 mNP FRAME/ARM. 284/286T 2..8. Pol.	
400	± 8.5	Type/ GP100 mNP FRAME/ARM. 284/286T 2..8. Pol.	
500	± 9.5	Type/ GP100 mNP FRAME/ARM. 284/286T 2..8. Pol.	
630	± 10	Type/ GP100 mNP FRAME/ARM. 284/286T 2..8. Pol.	

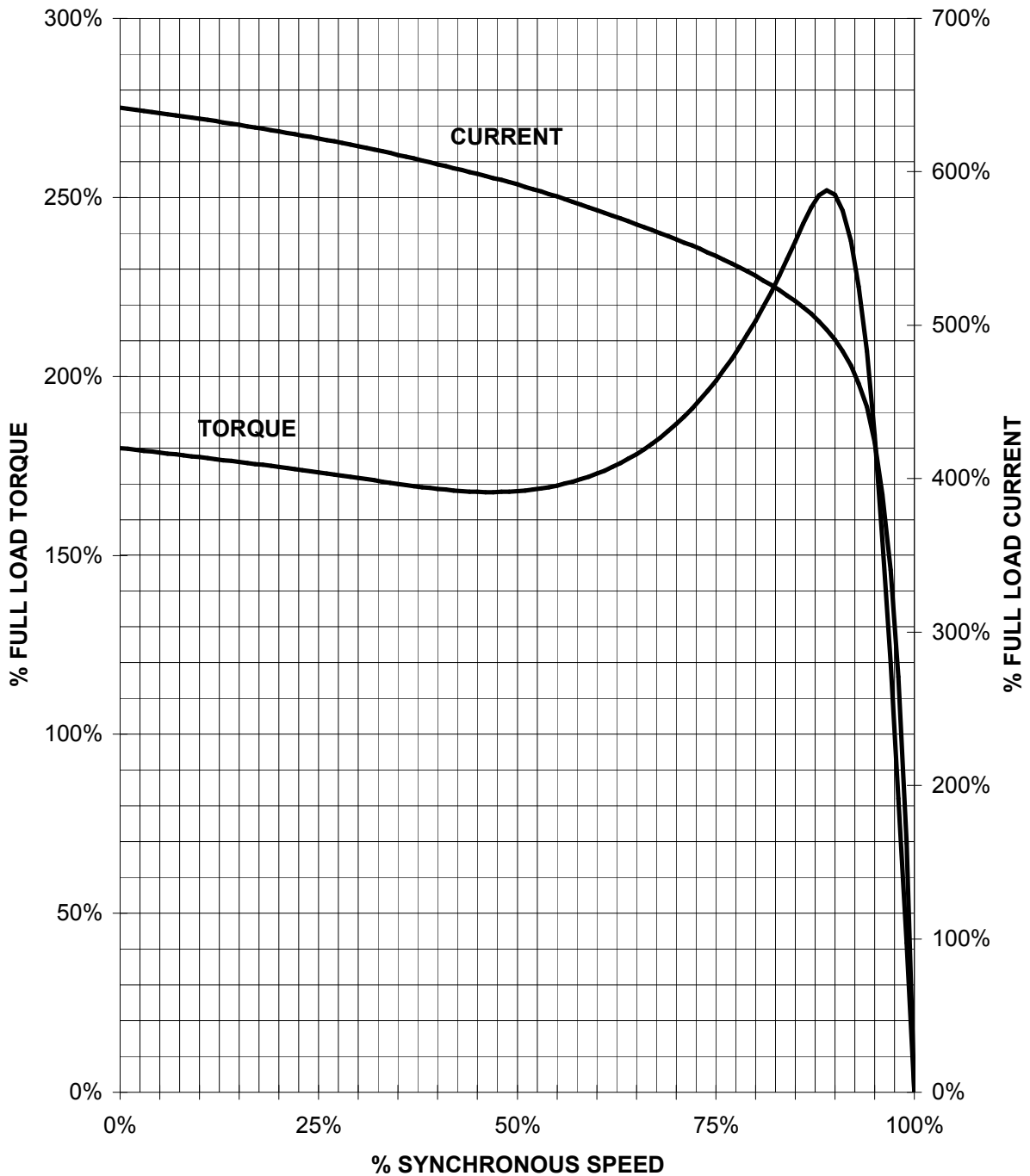
SIEMENS
 GUADALAJARA FACTORY

Ref. 3MSE 710 1155
 Rep. /

SIEMENS INDUSTRY, INC.

HP 30 VOLTS < 600V RPM 1800 TYPE GP100
HZ 60 PHASE 3 FRAME 286T NEMA B

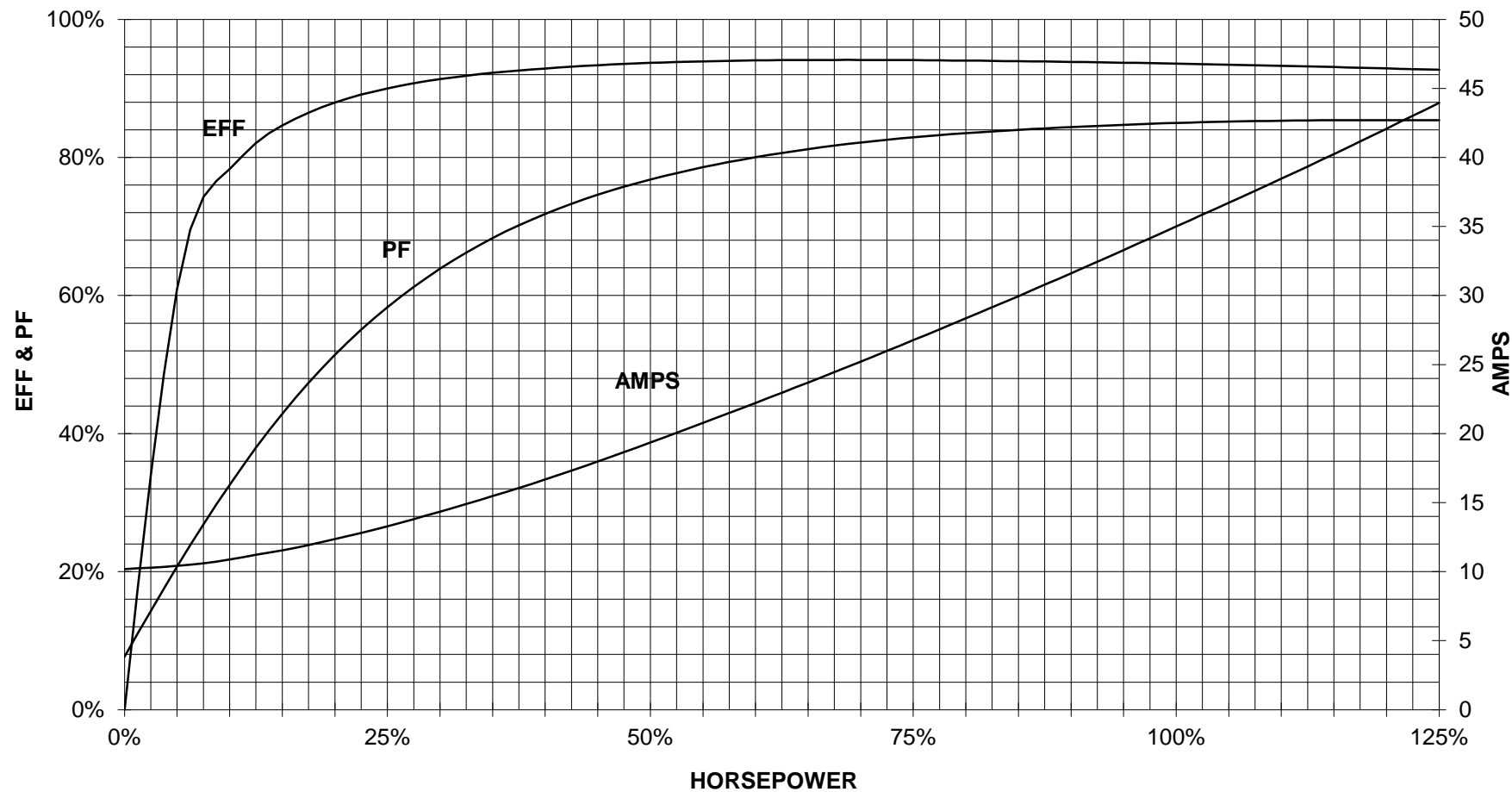
TORQUE & CURRENT VS. SPEED



CUSTOMER: _____ ORDER#: _____

30 HP 1800 RPM 286T FRAME 460 VOLTS 3 PHASE NEMA DESIGN B

SIEMENS INDUSTRY, INC.
PERFORMANCE CURVE
GP100



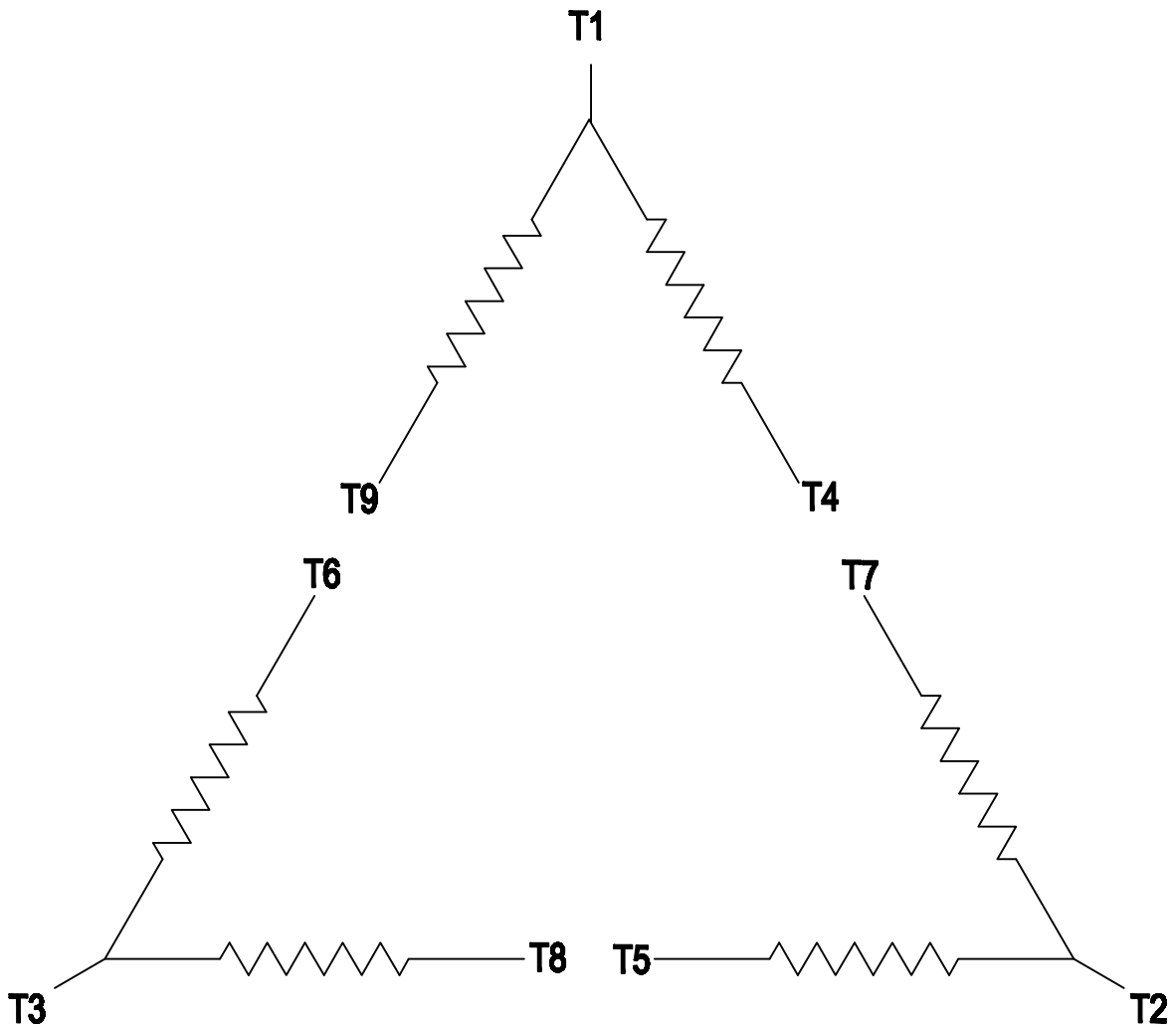
CUSTOMER _____ ORDER # _____ PO # _____

PERFORMANCE BASED ON DESIGN CALCULATIONS. SUBJECT TO CHANGE WITHOUT NOTICE.

REV. 1

2

1



B

B

A

A

3 PHASE - 9 LEADS - DELTA

VOLTS	LINES			CONNECTED TOGETHER	CONN.
	L1	L2	L3		
LOW	T1 T7 T6	T2 T8 T4	T3 T9 T5		△ △
HIGH	T1	T2	T3	T4 T7-T5 T8-T6 T9	△

THIS IS A CAD DRAWING
DO NOT MAKE MANUAL CHANGES

01	09-27-07	TYPE		-CONFIDENTIAL-				PROPERTY OF Siemens Little Rock, AR	
FRAME		HP		NAME WIRING DIAGRAM					
VOLTS		RPM	HZ	PH 3		Customer			
DRAWN 9.24.07		DATE		JRH		PO #		SO #	
CHECKED		DATE		APP		SHEET 1 OF 1		Sim. To	
						PART NO. 51-382-114-504		A	

2

1