

## NEMA Motor Data



Ordering data : **1LE2221-2CB11-6AA3**

Client order no. :  
 Order no. :  
 Offer no. :  
 Remarks :

Item no. :  
 Consignment no. :  
 Project :

Nameplate Data	Mounting and motor protection
----------------	-------------------------------

Type	GP100 - NEMA Premium Efficiency		
HP	25.0	Rating	Cont.
Voltage	(16) 230/460V, STD	Ins. Class	Class F (Standard)
Amps	60.0 / 30.0 A	S.F.	1.15
FL RPM	1775	Amb. Temp.	40 deg C
FL Efficiency	93.6 %	Temp. Rise	Class B
FRAME	284T	kVA Code	G
DE AFBMA	50BC03JP30	NEMA Des	B
ODE AFBMA	50BC02JPP30	Mtr WT	429.01
60 Hertz	3 Ph      TEFC	IP	54

Type of construction	( A ) Foot mounted - End shield
Motor protection	(A) No winding protection
Terminal box design	(3) Mounting - F-1

Bearing Data		
--------------	--	--

	DE	ODE
Bearing Size	6310 Z C3 S0	6210 ZZ C3 S0
Bearing Type	Ball Bearing	Ball Bearing
AFBMA	50BC03JP30	50BC02JPP30

Typical Performance Data					
--------------------------	--	--	--	--	--

Load	No Load	1/2	3/4	Full Load	LRC
Efficiency		93.5 %	94.0 %	93.6 %	
Power Factor		71.0	80.0	84.0	
Current (A)	11.0 A	17.6 A	23.3 A	60.0 / 30.0	183.0 A
Inverter Duty	VT	20:1	CT	4:1	

Mechanical Data				
-----------------	--	--	--	--

SAFE STALL TIME	HOT (s)	24	COLD (s)	44
Rtr wt (lbs)	102.80	Rtr WK2	4.36	
FLT (lb-ft)	74.000	LRT	180	BDT 250
Ext Load Inertia (WK2) Capability	105.0 lb-ft <sup>2</sup>			

Typical Noise Data										
--------------------	--	--	--	--	--	--	--	--	--	--

A-weighted Sound	Octave Band Center Frequencies Hertz (Hz)									
Pressure Level	125	250	500	1000	2000	4000	8000	SPL	65	
at 3 feet	43	51	55	55	62	59	51	SPwrL	76	

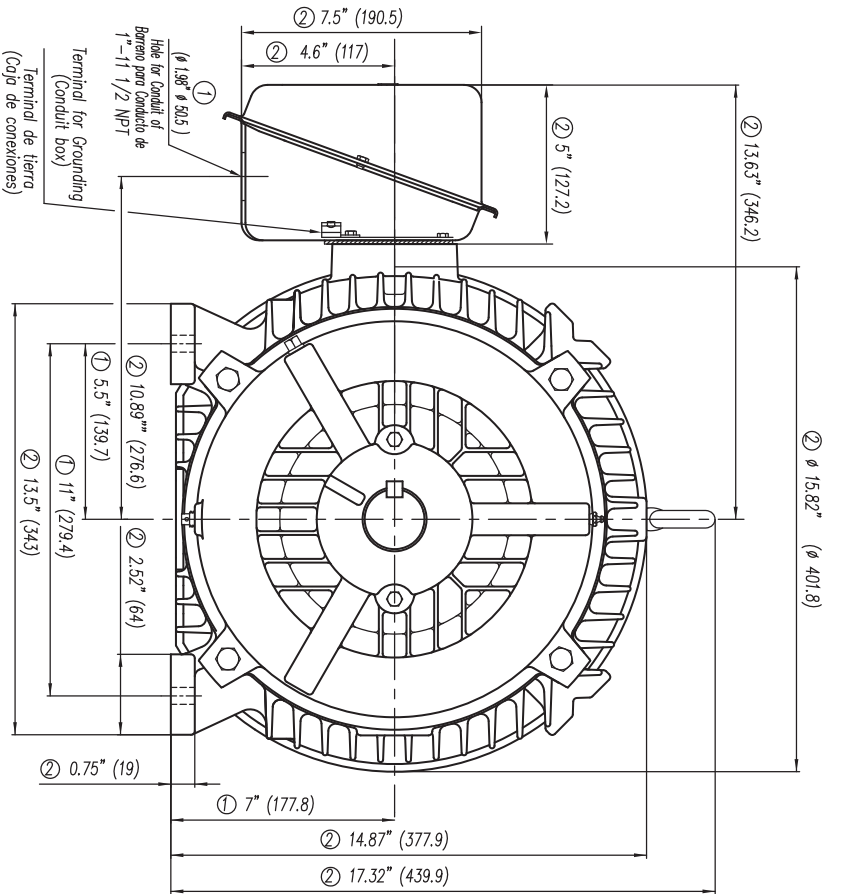
Wiring Connection Information					
-------------------------------	--	--	--	--	--

Description	3 PHASE - 9 LEAD - DELTA				
Voltage	L1	L2	L3	Connected together	
LOW	T1 T7 T6	T2 T8 T4	T3 T9 T5	-- -- --	
HIGH	T1	T2	T3	T4 T7-T5 T8-T6 T9	

Special design :
------------------

Lubrication Information	
-------------------------	--

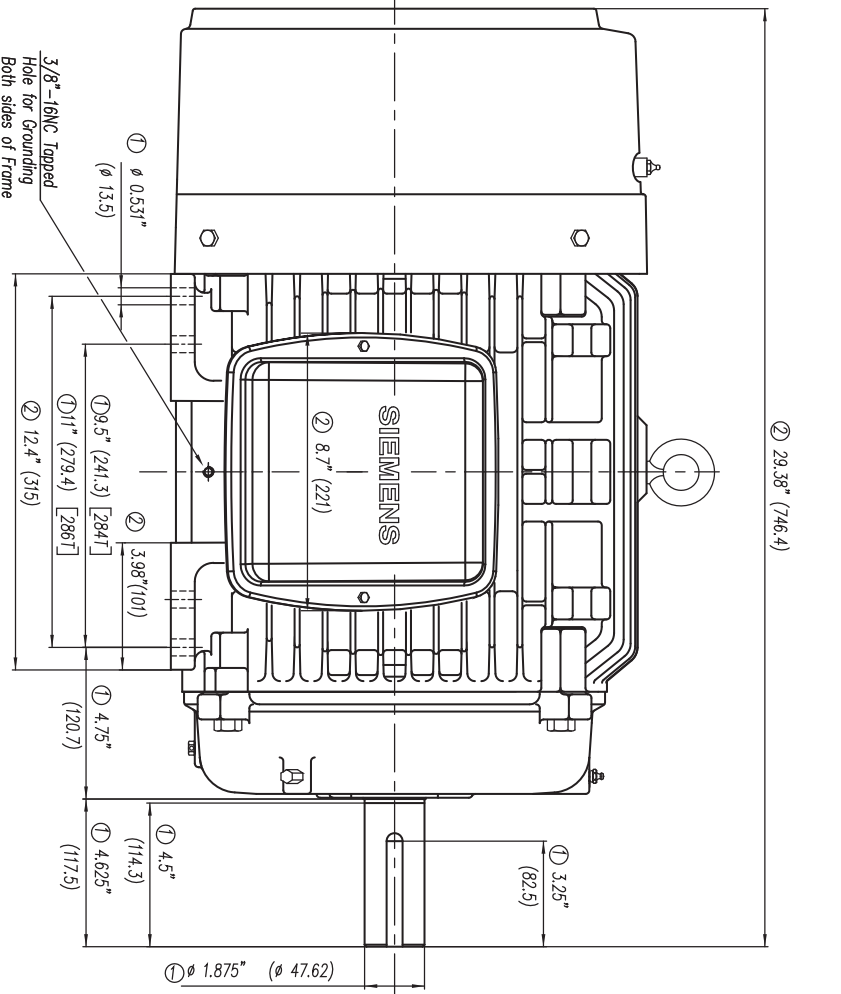
Manufacturer	Mobil Polyrex EM or equal
Type	Polyurea (standard)
DE Capacity (oz.)	2.60
ODEnd Capacity (oz.)	2.30



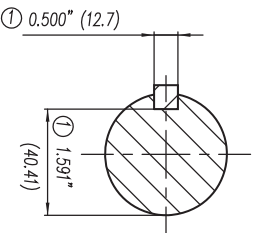
- ① Tolerances According to NEMA Std.
- ② All these dimensions corresponding to assemblies and castings shall have a tolerance as per DIN standard 1686-GTB-19.
- ③ Not According to NEMA Std.

- ① Tolerancias acorde a NEMA Std.
- ② Todas estas dimensiones correspondientes a ensambles y fundición en bruto tendrán una tolerancia según DIN 1686-GTB-19.
- ③ No Acorde a NEMA Std.

CERTIFIED PRINT / CERTIFICACION			
CUSTOMER/CLIENT			
PARTICULAR COMPANY		SUBORDINATED CENTER	
IP	BM	FRAME/CLASS	TYPE/PRO
		WATTS	PHASES
			Hz



3/8"-16NC Tapped Hole for Grounding Both sides of Frame (Rosca para Tierra en ambos lados)



Keyseat detail  
Detalle Cuiñero

Tol. in mm. acc. to/Tol. en mm. según DIN-1686-GTB-19		European Projection/Proyeccion Europea	
Over/desde To/hasta	± 4.5	Modific.	
18	± 4.7		
30	± 5		
50	± 5.5		
80	± 6		
120	± 6.5		
180	± 7		
250	± 7.5		
315	± 8		
400	± 8.5		
500	± 9.5		
630	± 10		

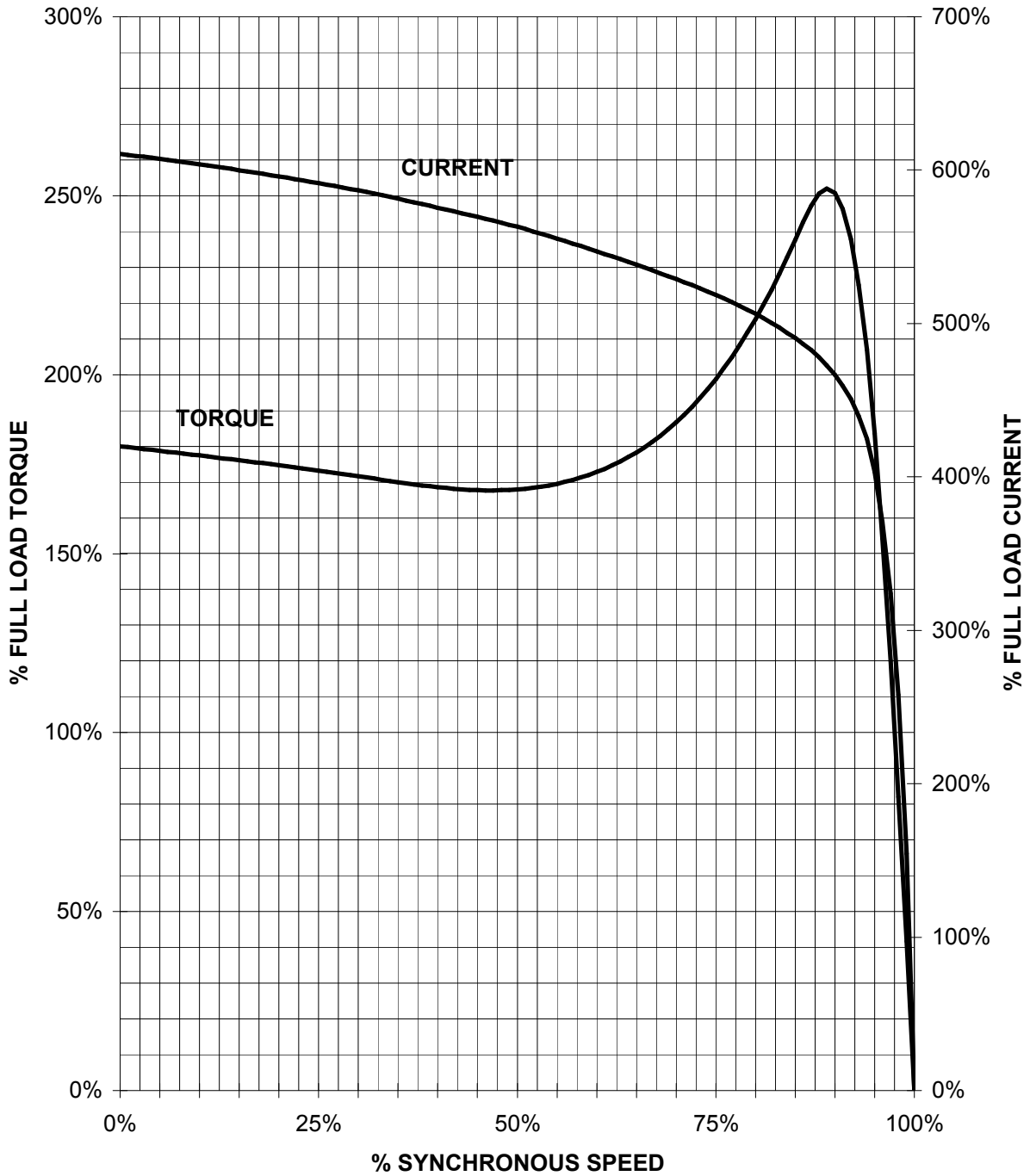
Date/Fecha		Name/Nombre	
08/04/10	A. Perez		
Check/Rev.		A. Reol	
Std.Cdd./Aut			

<b>SIEMENS</b>		<b>Outline/Dimensiones</b>	
GUADALAJARA FACTORY		Long Shaft/ Espiga Larga	
		Type/ GP100 mNP FRAME/ARM. 284/286T 2..8. Pol.	
		<b>3MSE 710 1410</b>	
Ref. 3MSE 710 1155		Rep. /	

# SIEMENS INDUSTRY, INC.

HP 25    VOLTS < 600V    RPM 1800    TYPE GP100  
HZ 60    PHASE 3    FRAME 284T    NEMA B

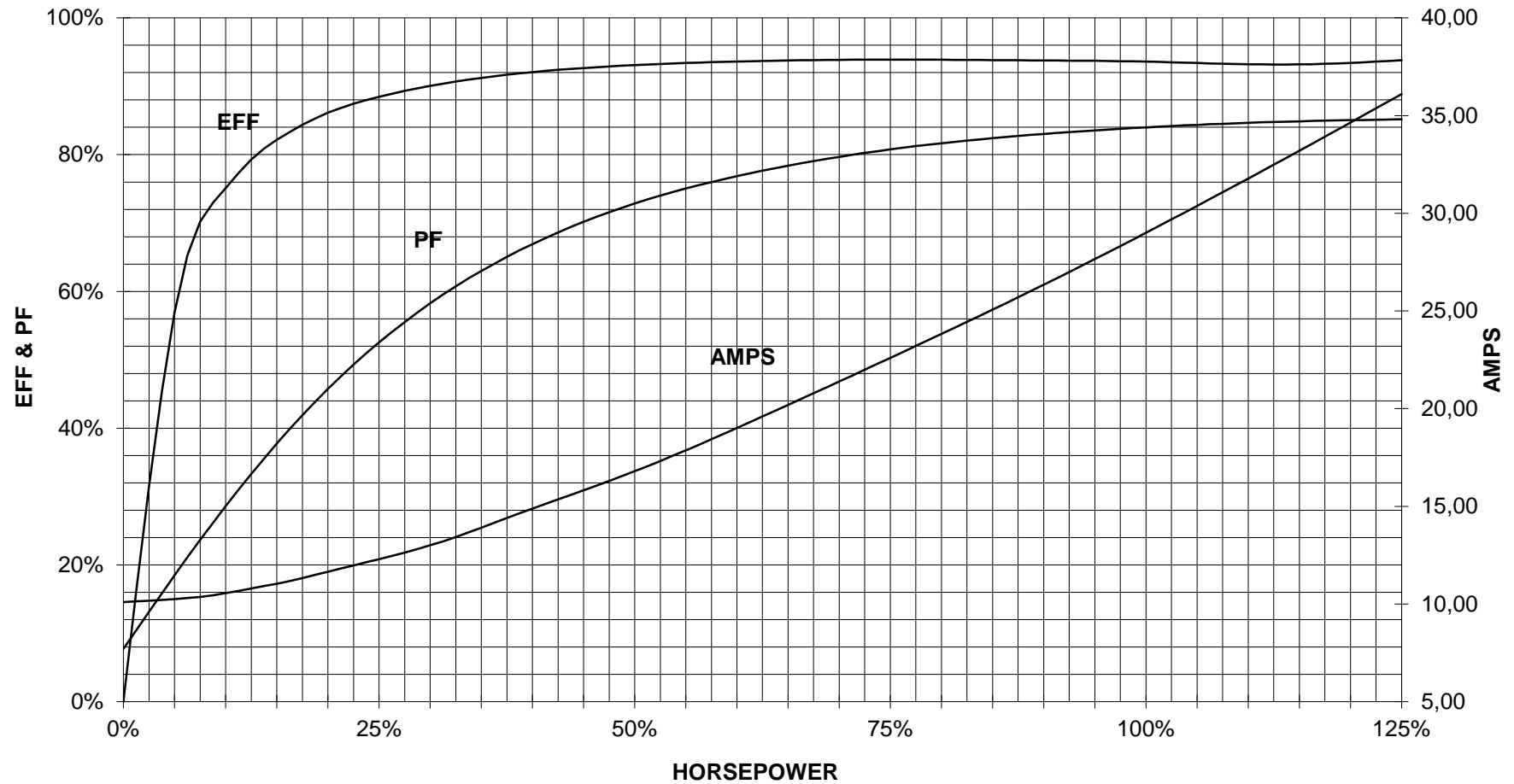
## TORQUE & CURRENT VS. SPEED



CUSTOMER: \_\_\_\_\_ ORDER#: \_\_\_\_\_

25 HP 1800 RPM 284T FRAME 460 VOLTS 3 PHASE NEMA DESIGN B

**SIEMENS INDUSTRY, INC.**  
**PERFORMANCE CURVE**  
**GP100**



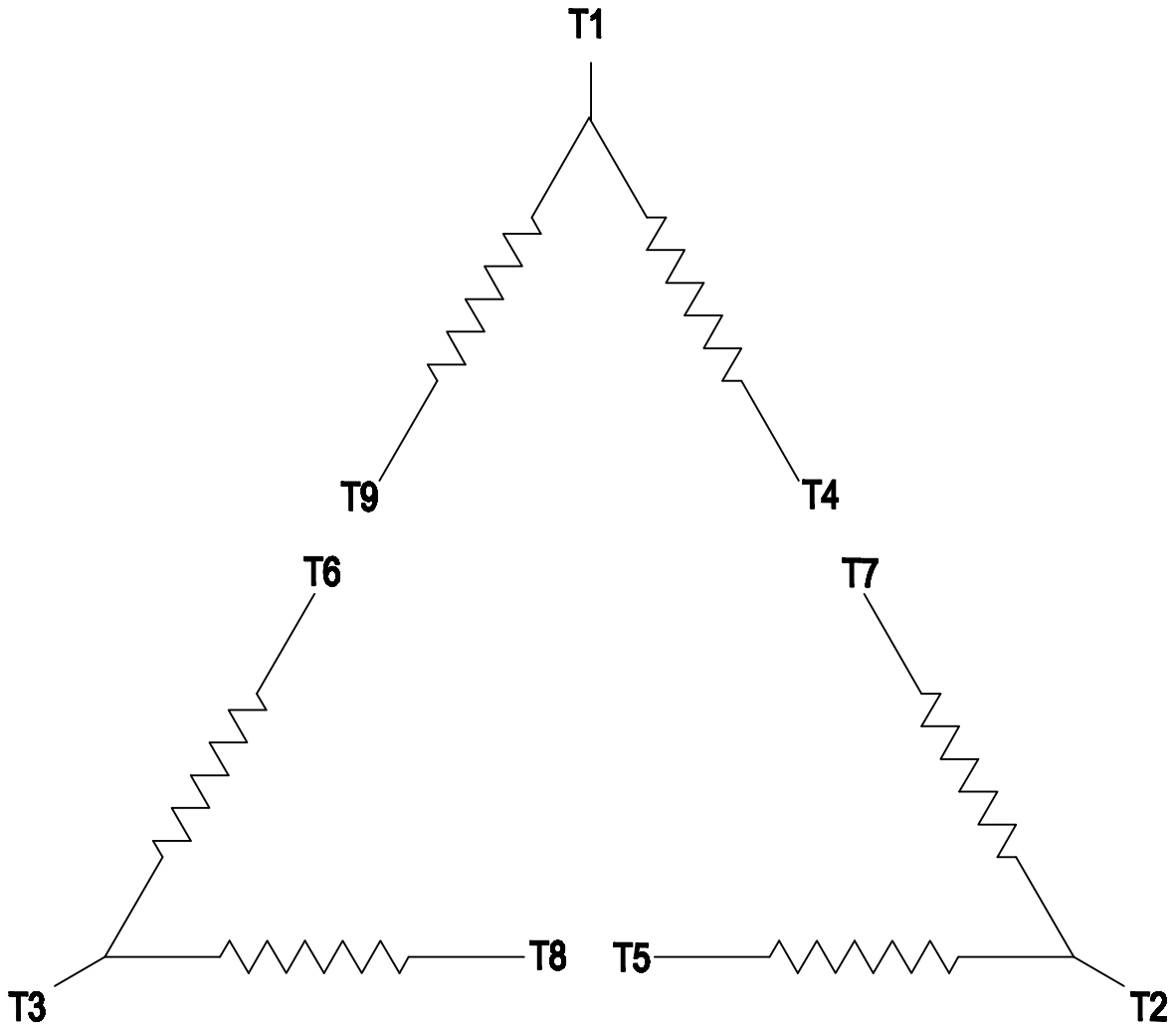
CUSTOMER: \_\_\_\_\_ ORDER #: \_\_\_\_\_

PERFORMANCE BASED ON DESIGN CALCULATIONS. SUBJECT TO CHANGE WITHOUT NOTICE.

REV. 1

2

1



**3 PHASE - 9 LEADS - DELTA**

VOLTS	LINES			CONNECTED TOGETHER	CONN.
	L1	L2	L3		
LOW	T1 T7 T6	T2 T8 T4	T3 T9 T5		△ △
HIGH	T1	T2	T3	T4 T7-T5 T8-T6 T9	△

THIS IS A CAD DRAWING  
DO NOT MAKE MANUAL CHANGES

01	09-27-07	TYPE		-CONFIDENTIAL-				PROPERTY OF Siemens Little Rock, AR	
FRAME		HP		NAME WIRING DIAGRAM					
VOLTS		RPM	HZ	PH 3		Customer			
DRAWN		9.24.07	DATE	JRH		PO #		SO #	
CHECKED		DATE		SHEET 1 OF 1		Sim. To		PART NO. 51-382-114-504	
APP		DATE						A	

2

1