

Datasheet

DPDT Rocker Switch, On-Off-(On), Black

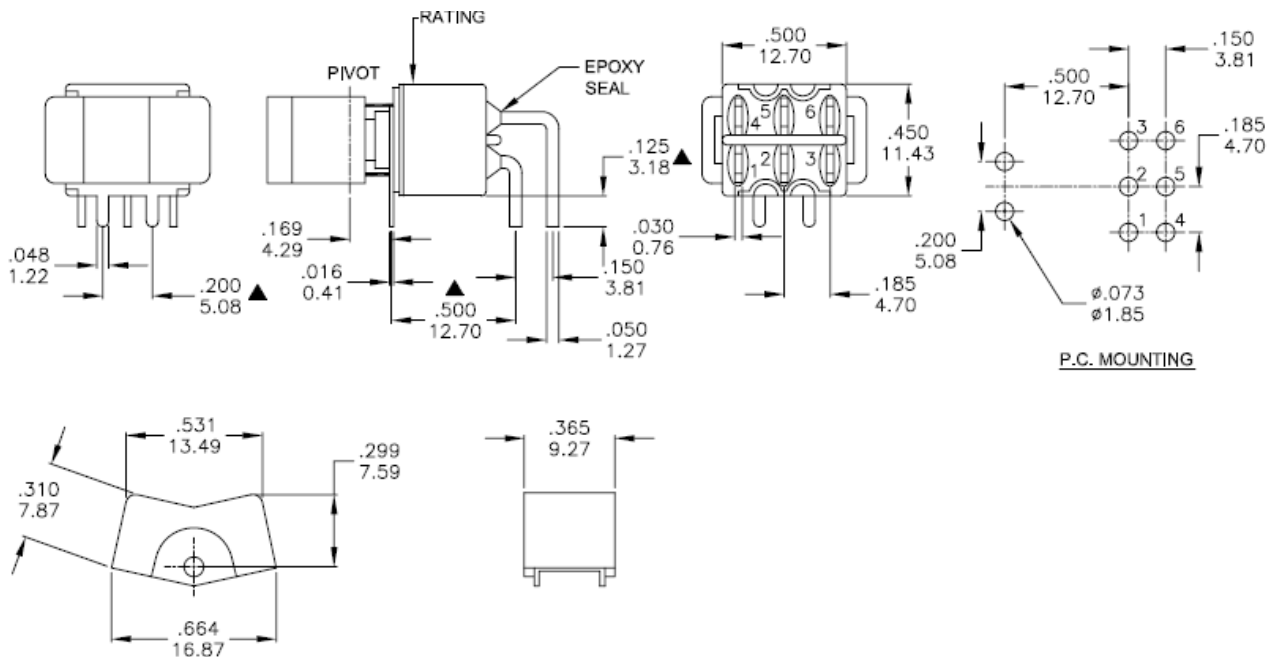
RS Stock number 734-6833



Specifications:

Mechanical Life:	40, 000 make-and-break cycles
Contact Resistance:	10m max. initial @ 2-4VDC 100mA for both silver and gold plated contacts
Insulation Resistance:	1,000M min
Dielectric Strength:	1,000 V rms @ sea level
Operating Temperature:	-30 to 85
Case:	Diallyl phthalate (DAP) (UL94v-0)
Actuator:	Nylon, black standard
Bushing:	Brass, nickel plated
Housing:	Stainless Steel
Switch Support:	Brass, tin plated
Terminal/Contact:	Brass, silver or gold plated
RoHS:	2002/95/EC
Rating:	R: 0.4VA max. @ 20V max. (AC or DC) Q: 2A @ 250VAC 5A @ 120VAC or 28VDC

Dimensions – mm



Model No.	POS.1	POS.2	POS.3
3MD5	ON	OFF	MOM
Term. Comm.	2-3,5-6		2-1,5-4
SCHEMATIC		OPEN	

SWITCH FUNCTION