

PLEASE CHECK WWW.MOLEX.COM FOR LATEST PART INFORMATION

Part Number: [11-24-1009](#)
Status: **Active**
Description: Insulation Anvil

Documents:
[RoHS Certificate of Compliance \(PDF\)](#)

General

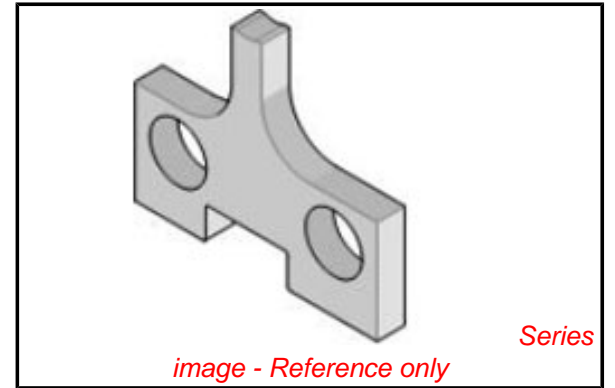
Product Family	Application Tooling
Series	T1001
Comments	See Tooling Specification (PDF) Above
Function	Cutter
Geographic Area	Global
Level of Automation	Manual
More Detailed Tech Information	applicationtooling@molex.com
Product Name	N/A
Survey	www.molex.com//review/apptool_survey.html
Tool Type	Anvil

Material Info

Old Part Number 4995 13

Reference - Drawing Numbers

Application Tooling Documents [ATS-STANDARD-PARTS](#)



EU RoHS **China RoHS**

Compliance Status

Not Reviewed

REACH SVHC

Not Reviewed

Low-Halogen Status

Not Reviewed

Need more information on product environmental compliance?

Email productcompliance@molex.com
 For a multiple part number RoHS Certificate of Compliance, [click here](#)

Please visit the [Contact Us](#) section for any non-product compliance questions.

Search Parts in this Series

[T1001Series](#)

Use With

[0011402096](#) , [0011402181](#) , [0011402206](#) ,
[0011403007](#) , [0011403024](#) , [0011403096](#) ,
[0011403099](#)