

A variation on the DP 106 series, offering a similar grip range, with the additional feature of the lower profile head/centre spindle ejecting to signal when the latch is undone.



ADVANTAGES

- * Head ejects to signal when unlocked, guards against door remaining unlocked after servicing.
- * Quick access- locks/unlocks in 90°
- * Adjustment feature provides for dustproof sealing when gasket used.
- * Attractive styling - unobtrusive head profile.
- * Single hole mounting.
- * Single operation for adjustability and locking.
- * Available in short and long grip versions.



The DP 140 Adjustable Pawl Latch is designed for use on air handling units, electronic cubicle doors, passenger transport valance doors and in the machine tool and sheet metal industries. The pawl finger travels up a threaded spindle and operation is achieved by a quarter clockwise turn to lock; the head remaining flush with the escutcheon when adjusted to the fully locked position. A quarter turn anti-clockwise releases the latch, the head ejecting to signal its unlocked state.

INSTALLATION PROCEDURE

The latch is supplied assembled. The pawl finger should be wound down to the bottom of the barrel and inserted through hole in panel. The lock nut is slipped over pawl, threaded onto the barrel and wrenched up securely. To ensure pawl is correctly positioned when locked, the barrel is D shaped, but the latch can be fitted to round hole if correctly aligned.

TECHNICAL INFORMATION

Panel Thickness Range - 1,22 - 3,24

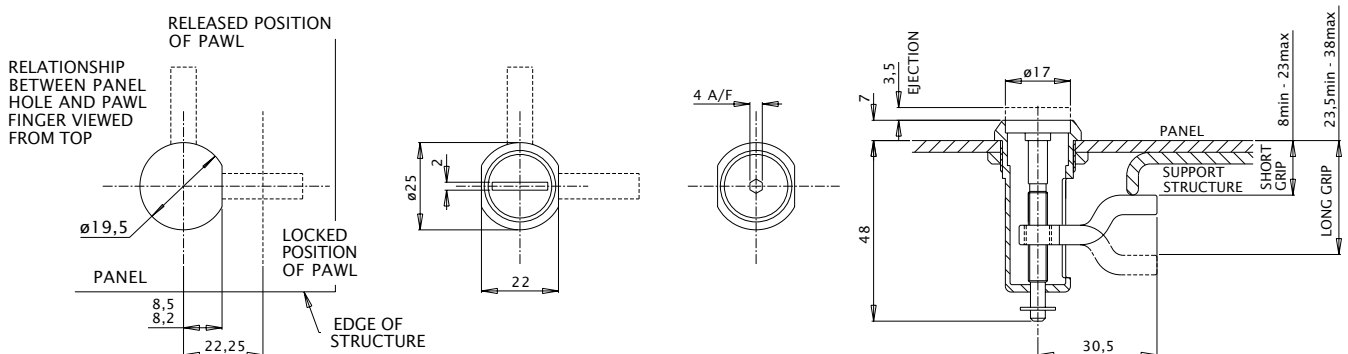
Grip Range

(a) Short Grip (Pawl curved toward panel) 8 min - 23 max

(b) Long Grip (Pawl curved away from panel) 23,5 min - 38 max

CALL-UP	DP 140S	- Short Grip, Slotted Head
	DP 140L	- Long Grip, Slotted Head
	DP 140SH	- Short Grip, Hexagon Recess Head
	DP 140LH	- Long Grip, Hexagon Recess Head

Standard finish - Zinc Plate, clear passivate



Pawl Latches DP150 Series

This heavy duty latch is similar in concept to the well known 'Budget Lock' but differs in having the added benefit of being adjustable. This provides for gasket compression and added strength.



ADVANTAGES

- *Quick release with 90° operation.
- *Three head styles.
- *Will compress fitted gasket.
- *Resists vibration.
- *6mm Grip Range.

TECHNICAL INFORMATION

Material - Mild Steel
Plating - Zinc with chromate passivation BS 1706 Zn3

INSTALLATION PROCEDURE

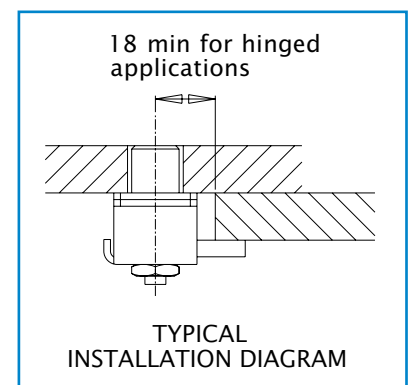
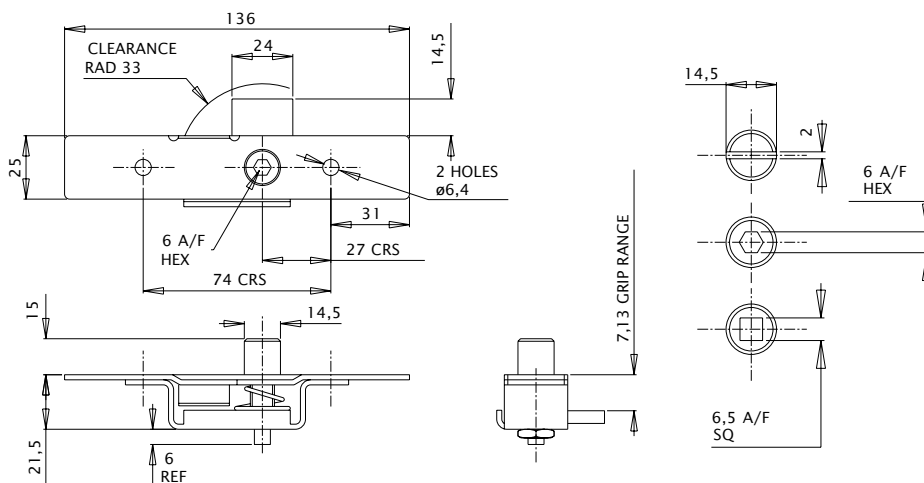
This latch may be fixed to back of door by using 6mm screws or the extra flange allows for moulding into G.R.P. panel.

OPERATION

This Heavy Duty latch operates through 90° to provide quick release. When gaskets are fitted the latch has 6mm of adjustment. The latch may be tightened by continuing to turn the operating screw in a clockwise movement. Reverse operation unlatches the fastener.

PART NO. CALL-UP

- DP 150S - Slotted head style - Use 2mm tipped screwdriver.
- DP 150H - Hexagon socket recess - Use 6mm allen key.
- DP 150Q - Square socket recess - Use 6,5mm or tapered key.



Pawl Latches DP160 Series

Developed primarily for access panels used within the Building and Construction industries, this latch offers rapid installation and extensive grip range. The Screw head can be surface mounted, recessed or hidden in thick panels up to 35mm.

The operating screw is rotated to tighten the assembly and reversal by approximately 90° allows the latch to disengage from the support structure, thus providing quick release, without the need for a receptacle element.

TECHNICAL INFORMATION

Material - Mild Steel except for aluminium grommet.

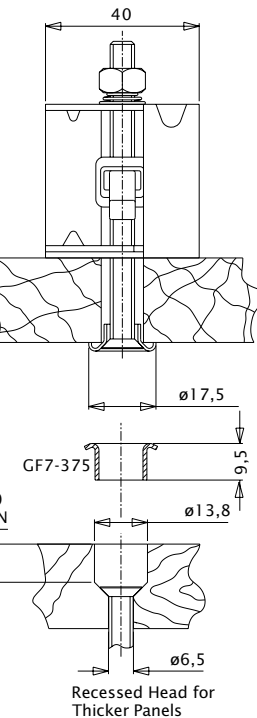
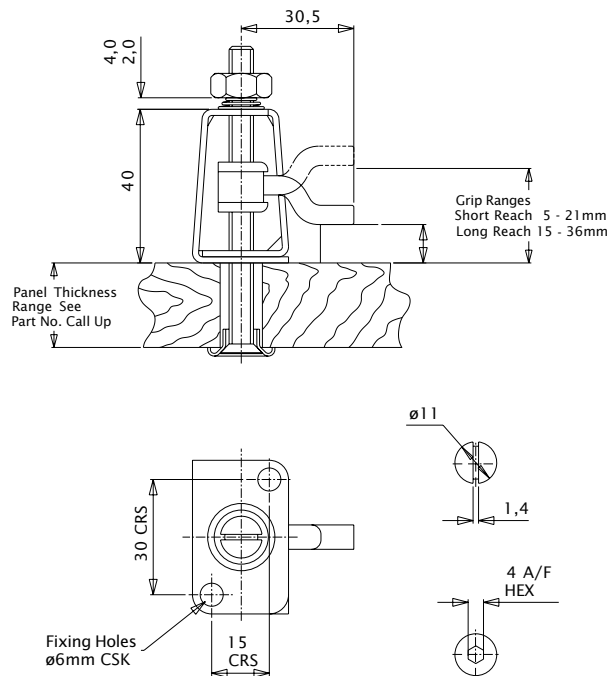
Plating - Operating screw-chrome.

Body and Pawl - Zinc with chromate passivation to BS 1706 Zn3

PART NO. CALL UP

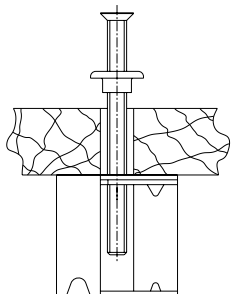
All parts supplied unassembled in plastic bag.

DP 160 SC-25M	-Slotted CSK screw for 25mm panel max.
DP 160 SC-35M	-Slotted CSK screw for 35mm panel max.
DP 160 HC-25M	-4mm hexagon recess screw for 25mm panel max.
DP 160 HC-35M	-4mm hexagon recess screw for 35mm panel max.
GF7-375	-Aluminium grommet for recessed holes in panel-order separately when required. Glue in position.



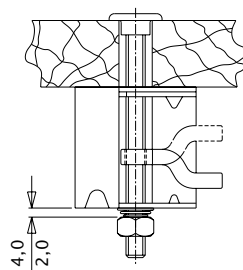
STAGE 1

Prepare panel (drill 11mm hole). Assemble grommet onto screw, insert screw through panel hole and use to locate housing to panel by 4mm (No.8) countersunk screws (not supplied).



STAGE 2

Locate and thread pawl onto screw (pawl may be fitted either way dependant on support thickness) continue threading through the pawl until the screw head seats in the panel hole, and the tip protrudes through the bottom of the housing. Locate the friction spring over the end of the screw (larger end against the housing) and secure assembly with locknut, so the spring is compressed as assembly stage 2, to within 2-4mm gap.



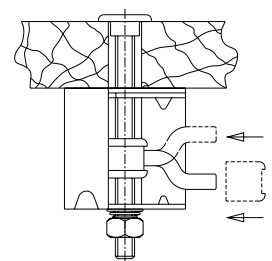
STAGE 3

Feed plastic clutch nut over pawl and snap onto thread.

OPERATION

The operating screw is rotated clockwise to engage the pawl behind a support and tighten the assembly. Reversal by approx. 90° allows the pawl to disengage, providing quick release.

Grip Range
Short Grip 5mm - 21mm
Long Grip 15mm - 36mm



DP160 Assembly Package consisting of: Housing, Screw, Grommet, Pawl, Clutch Nut, Friction spring and Locknut. With every order, we supply an installation leaflet included with the fasteners.

INSTALLATION PROCEDURE

This Latch should be fitted to the back of the panel by using 4mm (No.8) countersunk wood screws (not supplied). Locknut to be assembled between 2,0 and 4,0mm of housing- see drawing above.
Panel hole preparation - with standard grommet supplied Ø11mm. - for recessed head using GF7-375 grommet see drawing above.