

För icke direkt toleranssatta mått gäller toleransklass  
General tolerances if not otherwise stated

--

NOM DIM MM		TOL CLASS		
From	To	A	B	C
(1)	6	±0.05	±0.1	±0.2
(6)	30	±0.1	±0.2	±0.5
(30)	100	±0.15	±0.3	±0.8
(100)	300	±0.2	±0.5	±1.2
(300)	1000	±0.3	±0.8	±2

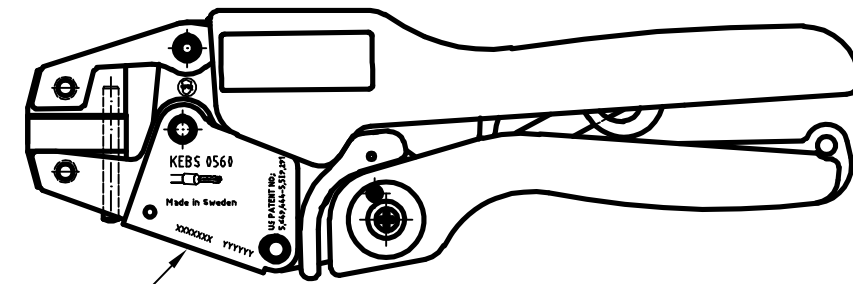
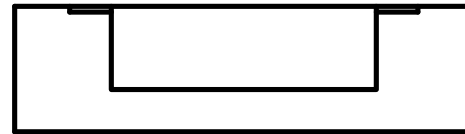
Hål / Holes H13

Skarpa kanter brutna där ej annat anges.  
No sharp edges unless otherwise specified.


Övriga generella toleranser enligt ritning 4100-4644.  
Additional general tolerances in accordance with drawing 4100-4644.

Denna ritning är Pressmaster AB:s egendom. Skyddad av gällande lag.  
This drawing is the property of Pressmaster AB. Protected in accordance with prevailing law.

Rev	Change order	Change: A = Added W = Was D = Deleted	Date	Sign
10	P2751	Ändrad enligt kund/ Changed according the customer	091112	SE



FÖRSPÄNNING / PRELOAD: 50 ± 15 N

Material		Behandling/Treatment			Status Frisläppt	
Konstr./Design MN	Ritad/Drawn SE	Datum/Date 2009-11-12	Skala/Scale 1:2	Kontr./Checked IP	Godk./Approved NE	Änne/Blank
<b>pressmaster</b> 			Benämning/Denomination <b>KRIMPTÅNG 297-2991</b> <b>CRIMPING TOOL</b>		Vikt/Weight, gram 43002432	Art grp 012
					Ritn nr/Drawing no 43002432	REV 010