

För icke direkt toleranssatta mått gäller toleransklass  
General tolerances if not otherwise stated

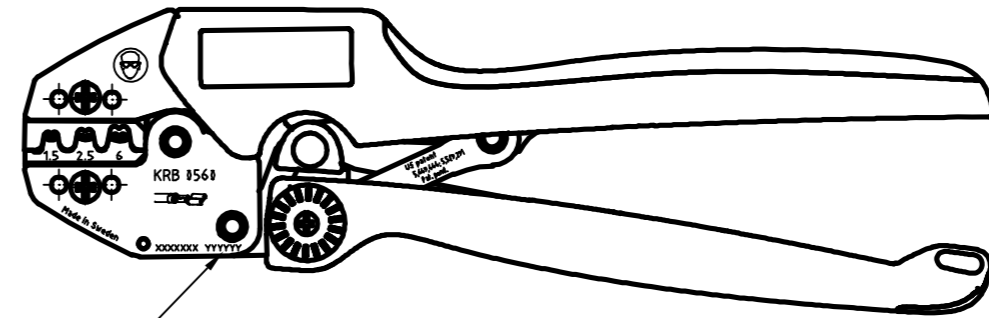
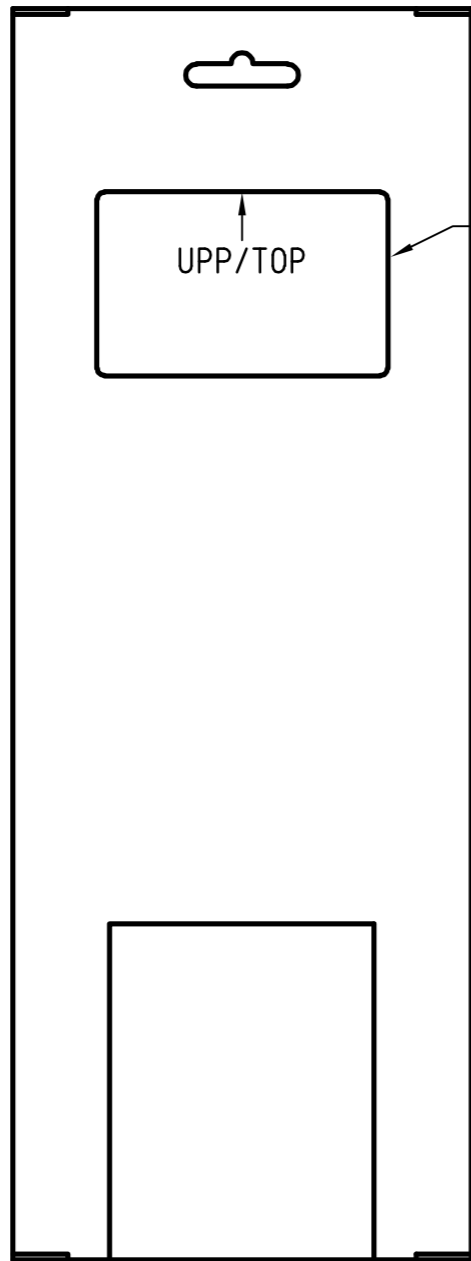
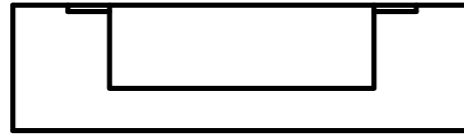
NOM DIM MM		TOL CLASS		
From	To	A	B	C
(1)	6	±0.05	±0.1	±0.2
(6)	30	±0.1	±0.2	±0.5
(30)	100	±0.15	±0.3	±0.8
(100)	300	±0.2	±0.5	±1.2
(300)	1000	±0.3	±0.8	±2

Hål / Holes H13

Skarpa kanter brutna där ej annat anges.  
No sharp edges unless otherwise specified.

Övriga generella toleranser enligt ritning 4100-4644.  
Additional general tolerances in accordance with drawing 4100-4644.

Denna ritning är Pressmaster AB:s egendom. Skyddad av gällande lag.  
This drawing is the property of Pressmaster AB. Protected in accordance with prevailing law.



4300-3691

FÖRSPÄNNING / PRELOAD: 140 ± 30 N

Rev	Change order	Change: A = Added W = Was D = Deleted	Date	Sign
11	P2751	Ändrad enligt kund/ Changed according the customer	091103	SE

Material		Behandling/Treatment			Status Frisläppt	
Konstr/Design CF	Ritad/Drawn IP	Datum/Date 2009-11-03	Skala/Scale 1:2	Kontr/Checked IP	Godk/Approved NE	Anne/Blank
<b>pressmaster</b> ®				Benämning/Denomination Krimptång 297-2963		Vikt/Weight, gram Art grp 012
ISO 9001 REG NR FM13647				CRIMPING TOOL		Ritn nr/Drawing no 43002434 REV 011