

EAO – Your Expert Partner for Human Machine Interfaces

45-2911.3000.113 - Keylock switch actuator 3 positions

45-2911.3000.113 - Keylock switch actuator 3 positions



Attention: The preview is based on a sample product. This can differ from your current configuration.

Mounting

Mounting cut-out 22.5 mm

Front

Front ring material Metal mat
Front ring colour sandgrey
Front shape round
Front dimension 29.45 mm

Other Attributes

Weight 0.061 kg

Operating-/Indication part

Switching angle C = 45°, B = 45°

IP-Rating

Front protection IP66, IP67, IP69K

Actuator

Key remove A
Switching action Maintained - Rest - Momentary
Housing material Plastic

Switching element

Rotary positions 3
6

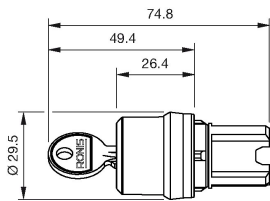
Function

Keylock switch

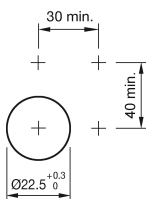
EAO – Your Expert Partner for Human Machine Interfaces

45-2911.3000.113 - Keylock switch actuator 3 positions

Dimensions



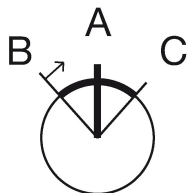
Mounting cut-outs



Wiring diagram



Switching positions



Additional information

The standard lock: RONIS, T254

Legend

Switching action: A = Rest, B = Momentary