

# EAO – Your Expert Partner for Human Machine Interfaces

## 45-2911.1000.113 - Keylock switch actuator 3 positions

### 45-2911.1000.113 - Keylock switch actuator 3 positions



*Attention: The preview is based on a sample product. This can differ from your current configuration.*

#### Mounting

Mounting cut-out 22.5 mm

#### Front

Front ring material Plastic  
Front ring colour black  
Front shape round  
Front dimension 29.45 mm

#### Other Attributes

Weight 0.060 kg

#### Operating-/Indication part

Switching angle C = 45°, B = 45°

#### IP-Rating

Front protection IP66, IP67, IP69K

#### Actuator

Key remove A  
Switching action Maintained - Rest - Momentary  
Housing material Plastic

#### Switching element

Rotary positions 3  
6

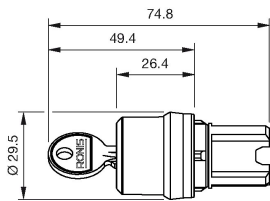
#### Function

Keylock switch

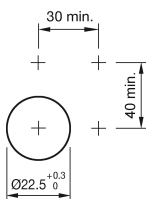
# EAO – Your Expert Partner for Human Machine Interfaces

45-2911.1000.113 - Keylock switch actuator 3 positions

## Dimensions



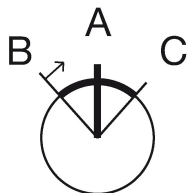
## Mounting cut-outs



## Wiring diagram



## Switching positions



## Additional information

The standard lock: RONIS, T254

## Legend

Switching action: A = Rest, B = Momentary