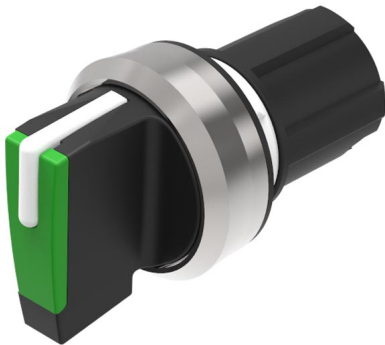


# EAO – Your Expert Partner for Human Machine Interfaces

## 45-2819.3C50.003 - Selector switch actuator 3 positions, short lever

### 45-2819.3C50.003 - Selector switch actuator 3 positions, short lever



*Attention: The preview is based on a sample product. This can differ from your current configuration.*

#### Mounting

Mounting cut-out  $\varnothing$  22.5 mm

#### Front

Front shape round  
Front dimension  $\varnothing$  29.45 mm  
Front ring material Plastic  
Front ring colour black

#### Other Attributes

Weight 0.022 kg

#### Operating-/Indication part

Lever material Plastic  
Lever colour green  
Switching angle  $C = 45^\circ$

#### IP-Rating

Front protection IP66, IP67, IP69K

#### Actuator

Switching action Maintained - Rest - Maintained  
Housing material Plastic

#### Switching element

Rotary positions 3  
6

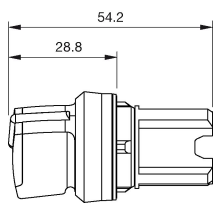
#### Function

Selector switch

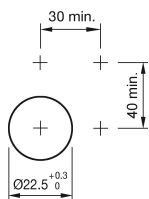
# EAO – Your Expert Partner for Human Machine Interfaces

45-2819.3C50.003 - Selector switch actuator 3 positions, short lever

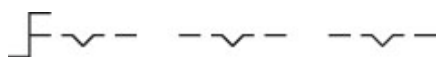
## Dimensions



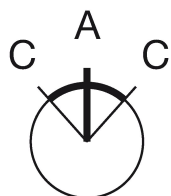
## Mounting cut-outs



## Wiring diagram



## Switching positions



## Additional information

External diameter of the short lever 32.3 mm

## Legend

Switching action: A = Rest, B = Momentary