

# Brass Compression Fitting Olive



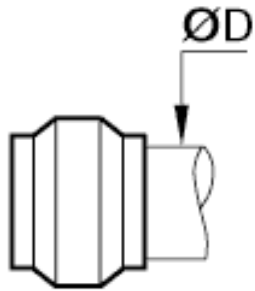
## Description

For use with the body and nut in order to form a complete Legris compression fitting.

Recommended for connection to thermoplastic, brass or hardened copper. Ensures optimum sealing of installation.

## Technical Specifications

|                     |   |
|---------------------|---|
| Working temperature | -40 to 250 °C<br>-40 to 282 °F<br>233 to 523 °K |
| Body                | BRASS   |



## Dimensions

| ØD (MM) | Weight (kg) |
|---------|-------------|
| 4       | 0.01        |