

# RLY9158

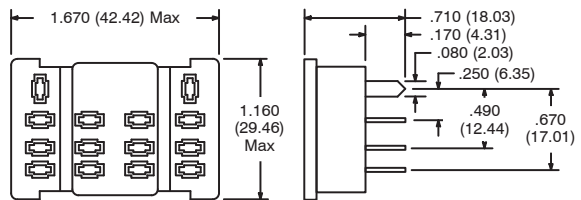
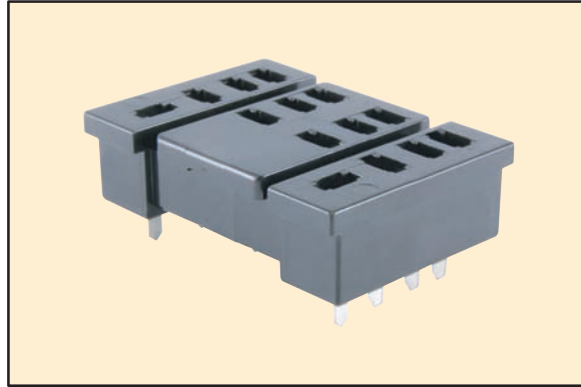
## 14-Pin Blade Socket

### Features

- PC Board Mount
- Solder Terminals
- Accepts .187" Blade Terminals
- 4PDT Applications

### Electrical Rating:

300 Volts, 10 Amps



# RLY9159



## 14-Pin Blade Socket

### Features

- DIN Rail/Surface Mount
- Pressure Clamp Screws
- Accepts .187" Blade Terminals
- 4PDT Applications

### Electrical Rating:

250 Volts, 10 Amps

