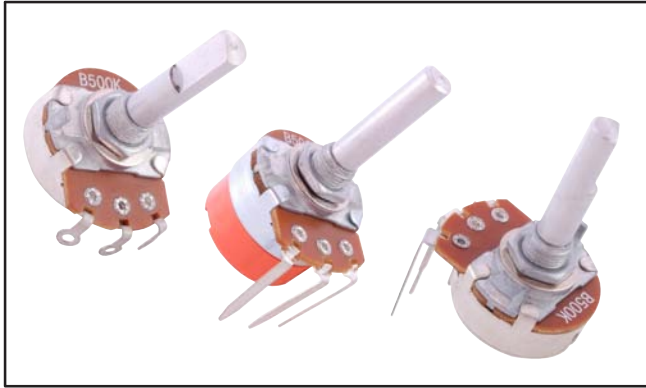


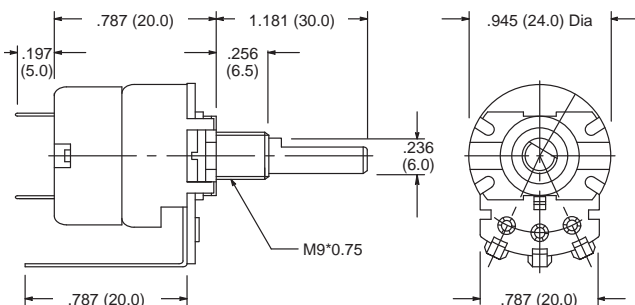
Features

- Available in Linear and Audio Taper
- Switch Type Available in Both Audio and Linear Taper
- Solder Lug and Combination Type Terminals
- Perfect for Consumer Electronics Applications



NTE Part No.	Value (Ohms)	Taper	Switch	Terminal Style	Diag No.
502-0401	500	Linear	No	Combination	P9
502-0402	1K	Linear	No	Solder Lug	P10
502-0403	1K	Audio	Yes	Combination	P11
502-0404	1K	Audio	No	Combination	P9
502-0405	5K	Audio	Yes	Combination	P11
502-0406	5K	Linear	No	Solder Lug	P10
502-0407	5K	Audio	No	Combination	P9
502-0408	10K	Linear	No	Solder Lug	P10
502-0409	10K	Linear	Yes	Combination	P11
502-0410	10K	Audio	No	Combination	P9
502-0411	10K	Audio	Yes	Combination	P11
502-0412	50K	Linear	No	Solder Lug	P10
502-0413	50K	Audio	No	Combination	P9
502-0414	50K	Audio	Yes	Combination	P11
502-0415	100K	Linear	No	Solder Lug	P10
502-0416	100K	Audio	No	Combination	P9
502-0417	100K	Audio	Yes	Combination	P11
502-0418	500K	Linear	No	Solder Lug	P10
502-0419	500K	Linear	Yes	Combination	P11
502-0420	500K	Audio	No	Combination	P9
502-0421	500K	Audio	Yes	Combination	P11
502-0422	1M	Linear	No	Solder Lug	P10
502-0423	1M	Linear	Yes	Combination	P11
502-0424	1M	Audio	No	Combination	P9
502-0425	1M	Audio	Yes	Combination	P11

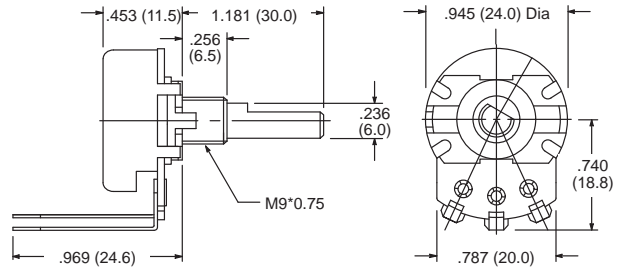
P11



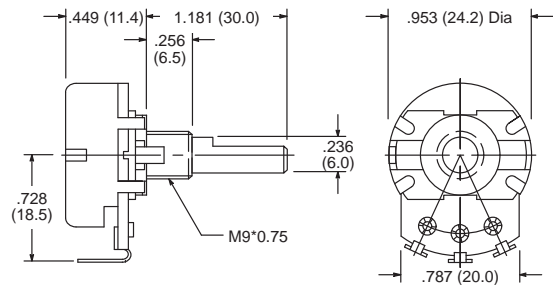
24mm Potentiometer

Potentiometer – 1/2 Watt and 1/4 Watt, 6mm dia. shaft

P9



P10



Specifications

Electrical

Resistance Range – Linear Taper: 500Ω to 1 Meg Ω
– Audio Taper: 1KΩ to 1 Meg Ω

Resistance Tolerance: ±20%

Sliding Noise: less than 47mV

Residual Resistance: ≤ 20Ω (R > 10K)
 ≤ 10Ω (R ≤ 10K)

Insulation Resistance: more than 100 Meg Ω at 500VDC

Switch Contact Resistance: less than 0.3Ω

Operating Voltage: 250VAC

Rated Power – Linear Taper: 0.5W
– Audio Taper: 0.25W

Switch Rated Power: 125VAC at 1A

Withstand Voltage: 1 minute at 500VAC

Mechanical

Total Rotation Angle: 300° ±10°

Switch Angle: 50° ±5°

Rotation Torque: 30gf.cm to 200gf.cm

Switch Action: 150gf.cm to 4350gf.cm

Rotation Stopper Strength: 5Kgf.cm Min

Shaft Push-Pull Strength: 7Kgf. Min

Rotation Life: 15,000 cycles

Switch Life: 10,000 cycles

Mounting Hole: .312" (7.9mm) dia,

Environmental

Operating Temperature: -10°C to +70°C

Resistance to Soldering Heat: 260°C for 3 seconds