

# Step Motor Controller

New



- Parallel I/O
- Step motor (Servo/24 VDC)
- Number of step data: 64 points

Step data input type

*JXC51/61 Series*



- Step motor (Servo/24 VDC)
- Number of step data: 64 points

EtherCAT®  
direct input type

*JXCE1 Series*

Applicable network



EtherNet/IP™  
direct input type

*JXC91 Series*

Applicable network



PROFINET  
direct input type

*JXCP1 Series*

Applicable network



DeviceNet™  
direct input type

*JXCD1 Series*

Applicable network



IO-Link  
direct input type

*JXCL1 Series*

Applicable network



CC-Link  
direct input type

*JXCM1 Series*

Applicable network



## JXC Series



CAT.ES100-141A

# Simple setting allows for immediate use!

## ◎ “Easy Mode” for simple setting

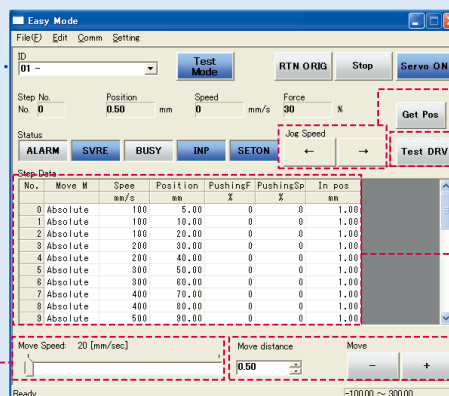
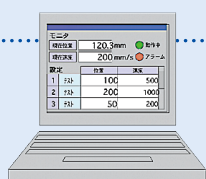
For immediate use, select “Easy Mode.”



JXC51/61

### <When a PC is used> Controller setting software

- Step data setting, test drive, jogging, and move for the constant rate can be set and operated on one screen.



Setting of jog and speed of the constant rate

Jogging

Start testing

Step data setting

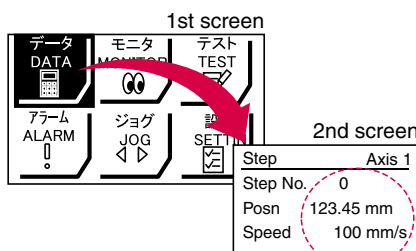
Move for the constant rate

### <When a TB (teaching box) is used>

- The simple screen without scrolling promotes ease of setting and operation.
- Choose an icon from the first screen to select a function.
- Set the step data and check the monitor on the second screen.

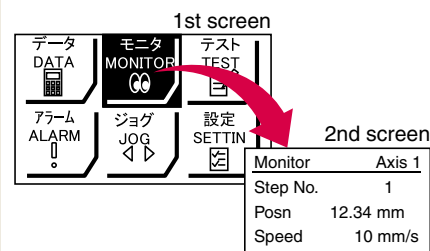


#### Example of setting the step data



After entering the values, they can be registered by pressing “SET.”

#### Example of checking the operation status



The operation status can be checked.

### Teaching box screen

- Data can be set by inputting only the position and speed. (Other conditions are preset.)

Step	Axis 1
Step No.	0
Posn	50.00 mm
Speed	200 mm/s



Step	Axis 1
Step No.	1
Posn	80.00 mm
Speed	100 mm/s

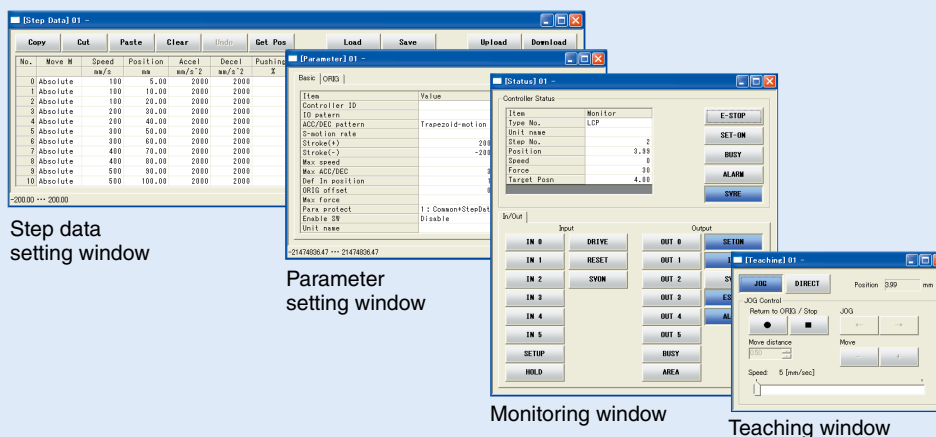
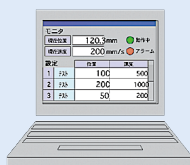
## ◎ “Normal Mode” for detailed setting

Select “Normal Mode” when detailed setting is required.

- Step data can be set in detail.
- Parameters can be set.
- Signals and terminal status can be monitored.
- JOG and constant rate movement, return to origin, test drive, and testing of forced output can be performed.

### <When a PC is used> Controller setting software

- Step data setting, parameter setting, monitoring, teaching, etc., are displayed in different windows.

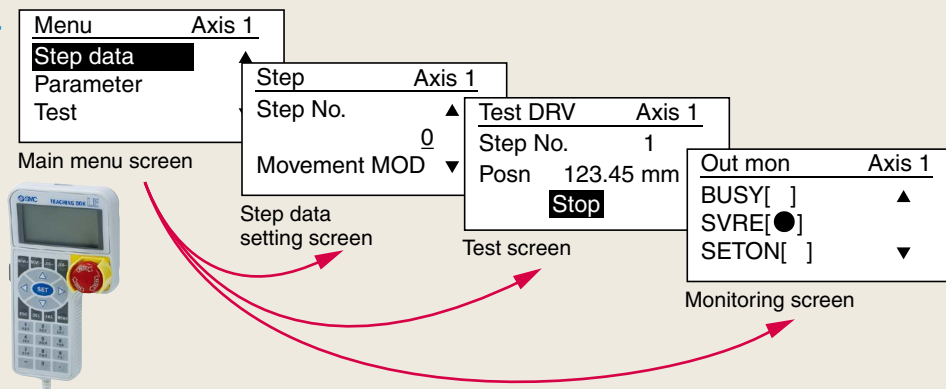


### <When a TB (teaching box) is used>

- Multiple step data can be stored in the teaching box and transferred to the controller.
- Continuous test drive by up to 5 step data

### Teaching box screen

- Each function (step data setting, test drive, monitoring, etc.) can be selected from the main menu.

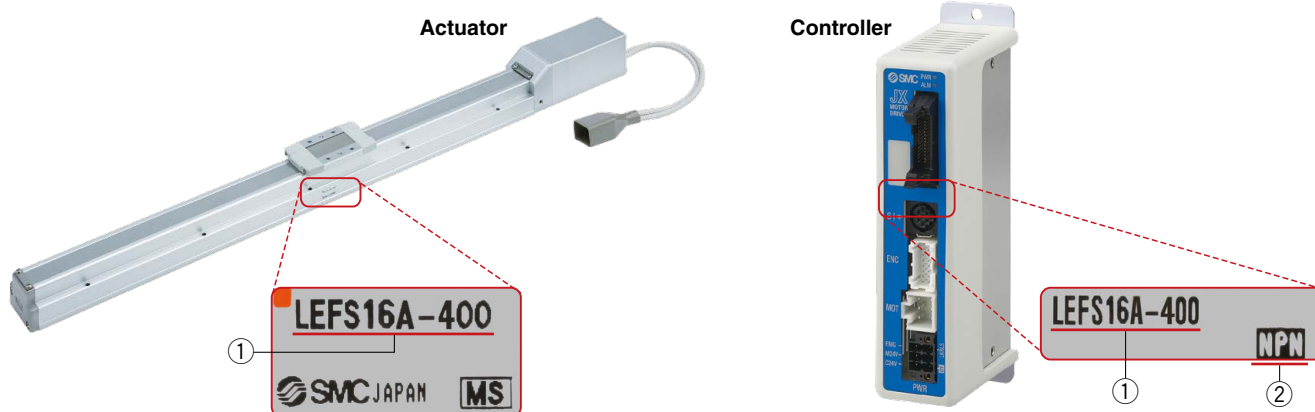


## The actuator and controller are provided as a set. (They can be ordered separately as well.)

Confirm that the combination of the controller and actuator is correct.

<Check the following before use.>

- ① Check the actuator label for the model number. This number should match that of the controller.
- ② Check that the Parallel I/O configuration matches (NPN or PNP).



## Fieldbus Network

# EtherCAT®/EtherNet/IP™/PROFINET/ DeviceNet™/IO-Link/CC-Link Direct Input Type Step Motor Controller/JXC□ Series p. 16

Ether**CAT**®

EtherNet/IP™

PROFI**NET**®

DeviceNet™

IO-Link

CC-Link



JXCE1



JXC91



JXCP1



JXCD1



JXCL1



JXCM1

### Two types of operation command

**Step no. defined operation:** Operate using the preset step data in the controller.

**Numerical data defined operation:** The actuator operates using values such as position and speed from the PLC.

### Numerical monitoring available

Numerical information, such as the current speed, current position, and alarm codes, can be monitored on the PLC.

### Transition wiring of communication cables

Two communication ports are provided.

\* For the DeviceNet™ type and CC-Link type, transition wiring is possible using a branch connector.

\* 1 to 1 in the case of IO-Link



## Application

Communication protocols

Ether**CAT**®

EtherNet/IP™

PROFI**NET**®

DeviceNet™

IO-Link

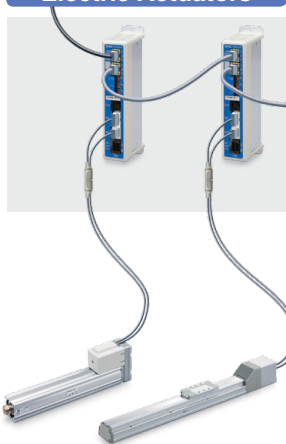
CC-Link



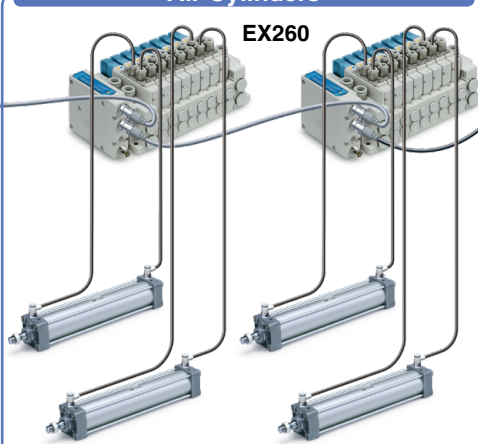
Both air and electric systems can be established under the same protocol.

Can be additionally installed in an existing network

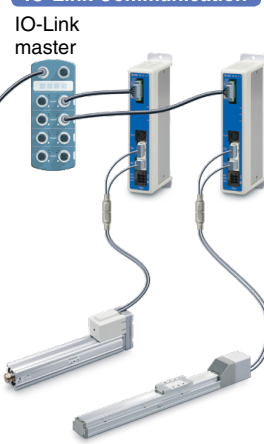
### Electric Actuators



### Air Cylinders



### IO-Link Communication



### <Applicable Electric Actuators>



Slider Type  
LEF Series



Low Profile Slider Type  
LEM Series



Guide Rod Slider  
LEL Series



Rod Type  
LEY/LEYG Series



Slide Table  
LES/LESH Series



Miniature Type  
LEPY/LEPS Series

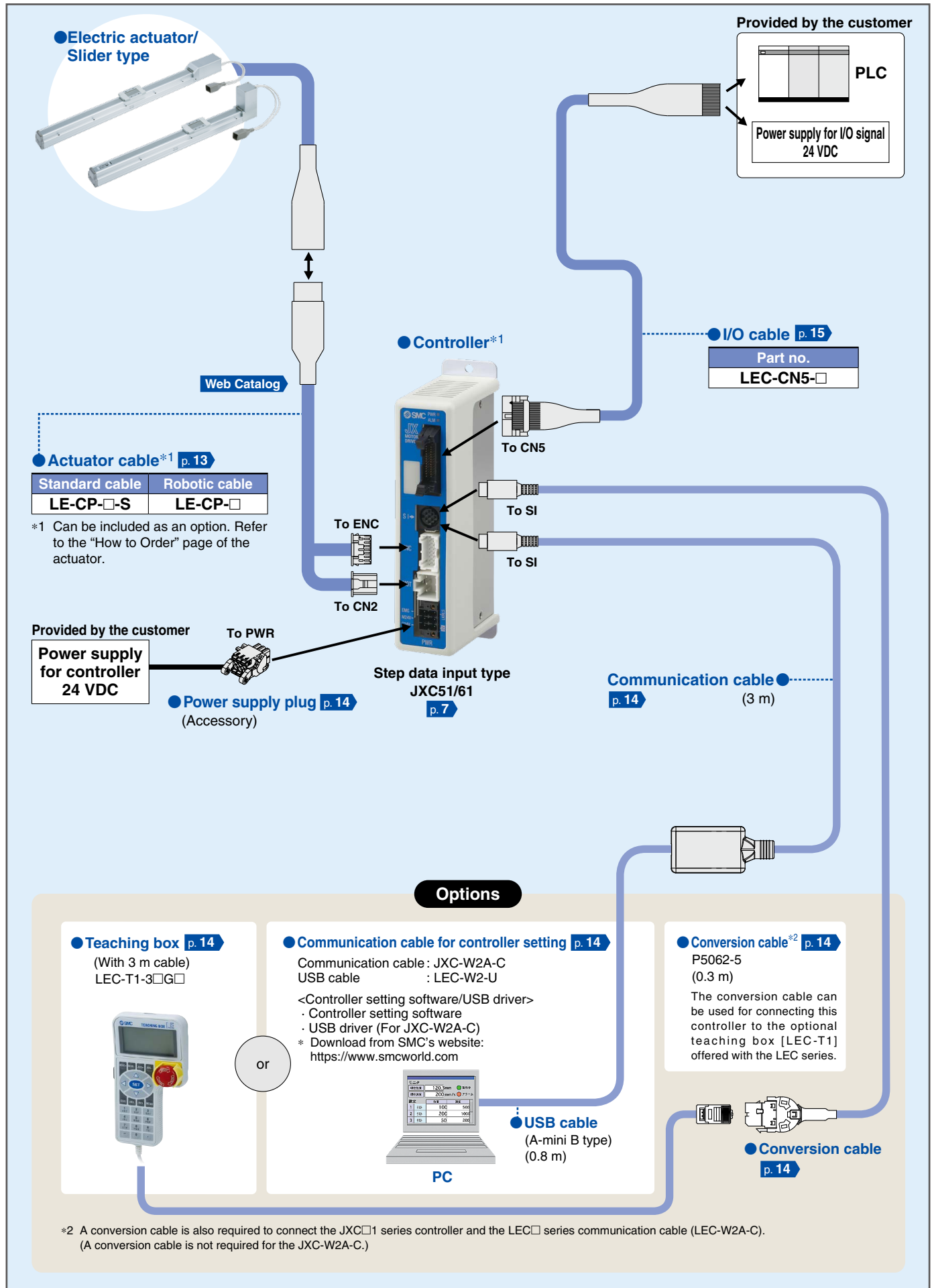


Gripper  
LEH Series



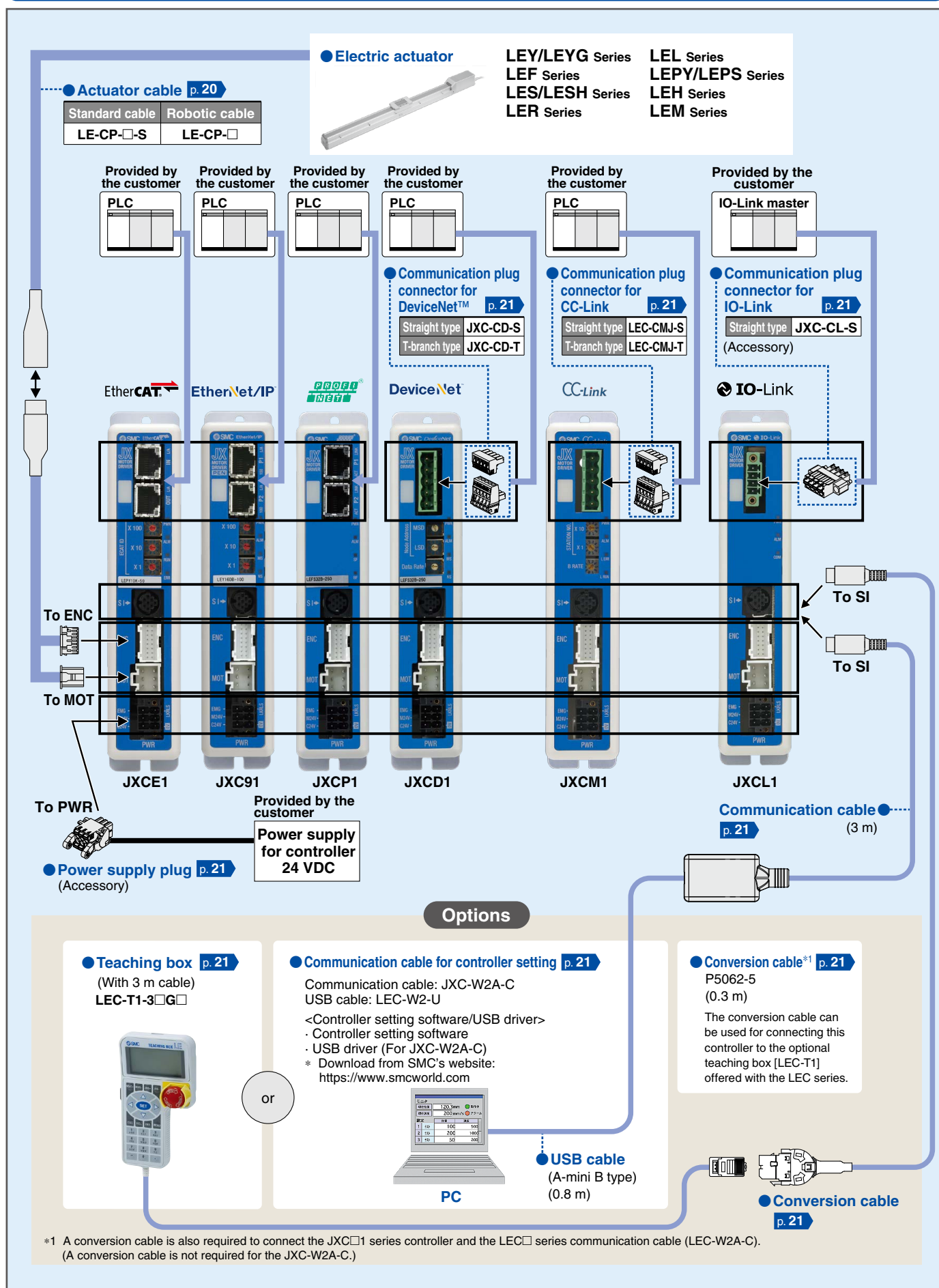
Rotary Table  
LER Series

## System Construction/General Purpose I/O



## System Construction/Fieldbus Network

(EtherCAT®/EtherNet/IP™/PROFINET/DeviceNet™/IO-Link/CC-Link Direct Input Type)



# CONTENTS

## Controller (Step Data Input Type) JXC51/61 Series



JXC51/61

How to Order .....	p. 7
Specifications .....	p. 7
How to Mount .....	p. 8
Dimensions .....	p. 9
Wiring Example .....	p. 10
Step Data Setting .....	p. 11
Signal Timing .....	p. 12
Actuator Cable .....	p. 13
Options .....	p. 14
Option: I/O Cable .....	p. 15

JXC51/61 Series

## Step Motor Controller JXCE1/91/P1/D1/L1/M1 Series

EtherCAT<sup>®</sup> → EtherNet/IP<sup>®</sup> PROFINET<sup>®</sup>



JXCE1



JXC91



JXCP1

How to Order .....	p. 16
Specifications .....	p. 17
Example of Operation Command .....	p. 17
Dimensions .....	p. 18
Actuator Cable .....	p. 20
Options .....	p. 21

DeviceNet<sup>®</sup> IO-Link<sup>®</sup> CC-Link<sup>®</sup>



JXCD1



JXCL1



JXCM1

JXCE1/91/P1/D1/L1/M1 Series

Precautions Relating to Differences in Controller Versions .....	p. 22
--	-------

# Controller (Step Data Input Type)

## JXC51/61 Series



### How to Order

JXC 5 1 7 1 -  

1
2
3
4

#### 1 Parallel I/O type

5	NPN
6	PNP

#### 2 Mounting

7	Screw mounting
8*1	DIN rail

\*1 The DIN rail is not included.  
Order it separately.

#### 3 I/O cable length [m]

Nil	None
1	1.5
3	3
5	5

#### 4 Actuator part number

Without cable specifications and actuator options  
Example: Enter "LEFS25B-100" for the  
LEFS25B-100B-R1□□.

**BC** Blank controller\*1

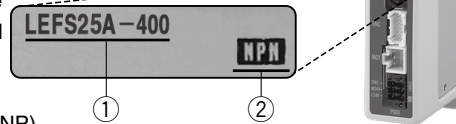
\*1 Requires dedicated software (JXC-BCW)

### The controller is sold as single unit after the compatible actuator is set.

Confirm that the combination of the controller and actuator is correct.

#### <Check the following before use.>

- ① Check the actuator label for the model number. This number should match that of the controller.
- ② Check that the Parallel I/O configuration matches (NPN or PNP).



### Precautions for blank controllers (JXC□1□□-BC)

A blank controller is a controller to which the customer can write the data of the actuator it is to be combined and used with. Use the dedicated software (JXC-BCW) for data writing.

- Please download the dedicated software (JXC-BCW) via our website.
- Order the communication cable for controller setting (JXC-W2A-C) separately to use this software.

**SMC website**

<https://www.smcworld.com>

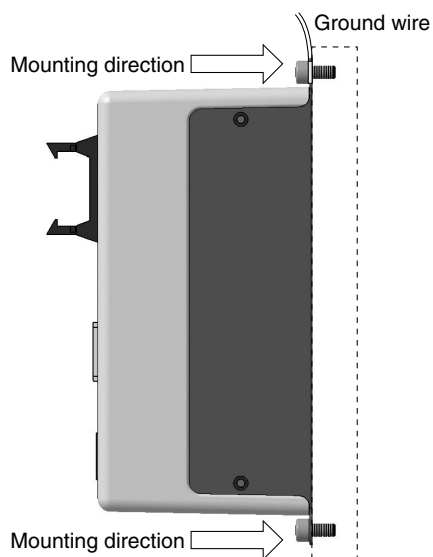
\* Refer to the operation manual for using the products. Please download it via our website:  
<https://www.smcworld.com>

## Specifications

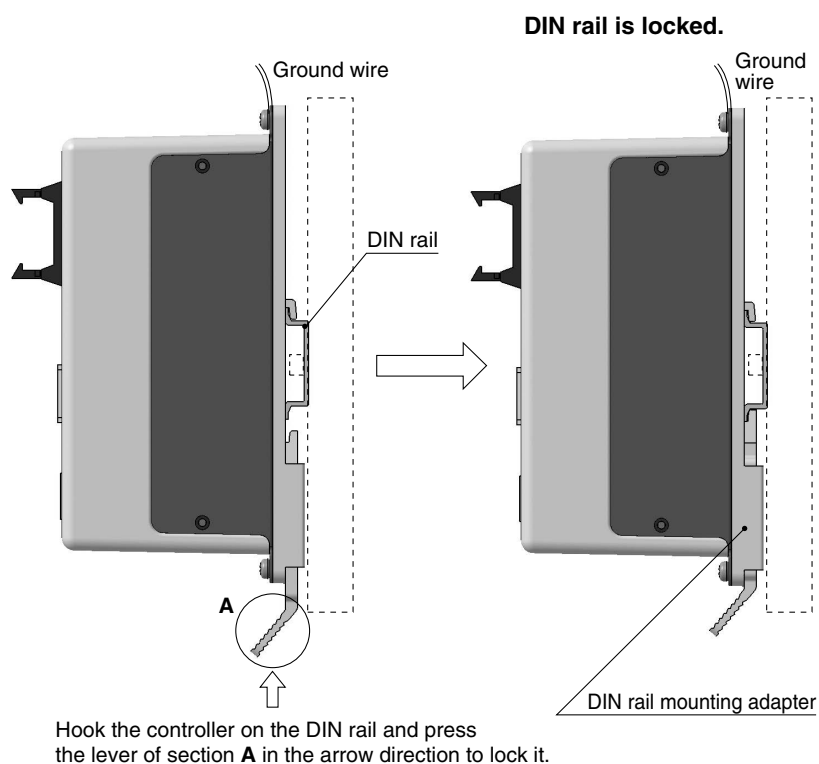
Model	JXC51 JXC61
Compatible motor	Step motor (Servo/24 VDC)
Power supply	Power voltage: 24 VDC ±10%
Current consumption (Controller)	100 mA or less
Compatible encoder	Incremental A/B phase (800 pulse/rotation)
Parallel input	11 inputs (Photo-coupler isolation)
Parallel output	13 outputs (Photo-coupler isolation)
Serial communication	RS485 (Only for the LEC-T1 and JXC-W2)
Memory	EEPROM
LED indicator	PWR, ALM
Cable length [m]	Actuator cable: 20 or less
Cooling system	Natural air cooling
Operating temperature range [°C]	0 to 55°C (No freezing)
Operating humidity range [%RH]	90 or less (No condensation)
Insulation resistance [MΩ]	Between all external terminals and the case: 50 (50 VDC)
Weight [g]	150 (Screw mounting), 170 (DIN rail mounting)

## How to Mount

### a) Screw mounting (JXC□17□-□) (Installation with two M4 screws)



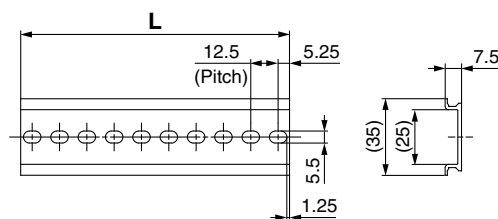
### b) DIN rail mounting (JXC□18□-□) (Installation with the DIN rail)



\* When size 25 or more of the LE series are used, the space between the controllers should be 10 mm or more.

### DIN rail AXT100-DR-□

\* For □, enter a number from the No. line in the table below.  
Refer to the dimension drawings on page 9 for the mounting dimensions.



#### L Dimensions [mm]

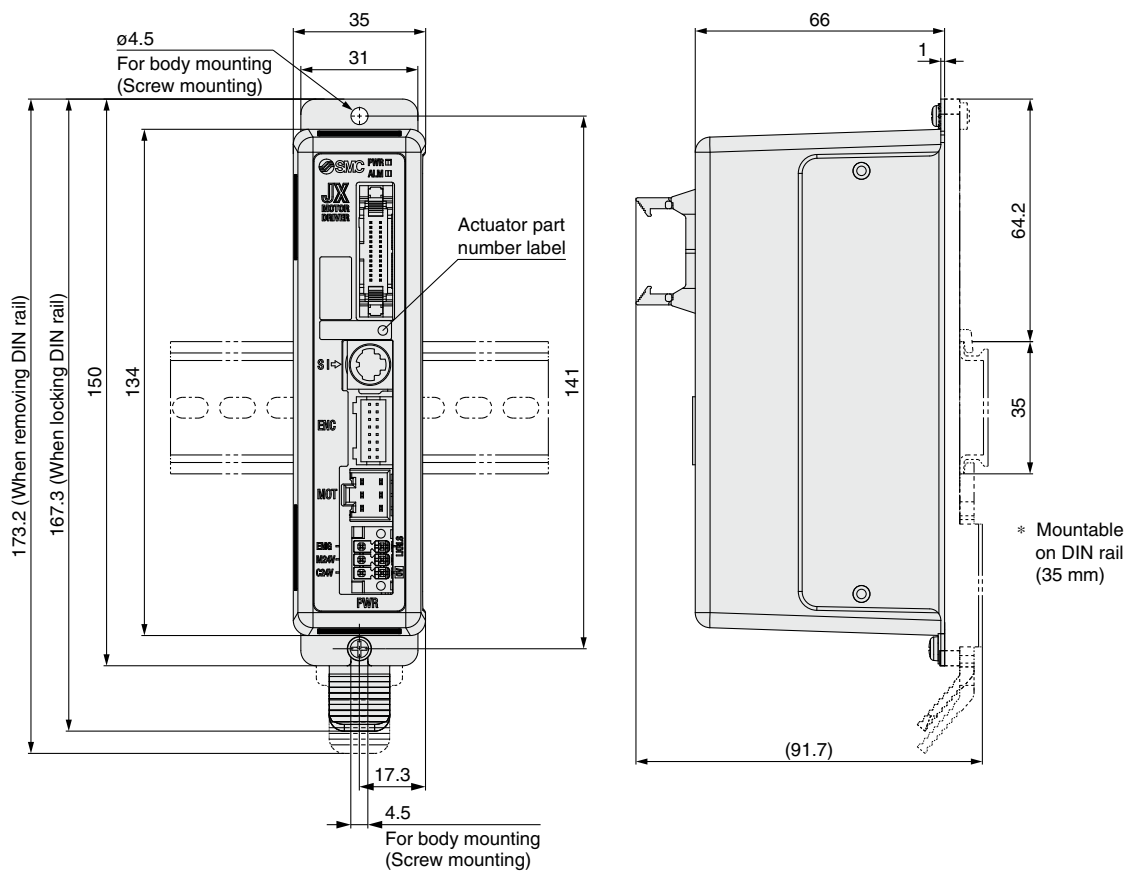
No.	1	2	3	4	5	6	7	8	9	10	11	12	13	14	15	16	17	18	19	20
<b>L</b>	23	35.5	48	60.5	73	85.5	98	110.5	123	135.5	148	160.5	173	185.5	198	210.5	223	235.5	248	260.5
No.	21	22	23	24	25	26	27	28	29	30	31	32	33	34	35	36	37	38	39	40
<b>L</b>	273	285.5	298	310.5	323	335.5	348	360.5	373	385.5	398	410.5	423	435.5	448	460.5	473	485.5	498	510.5

### DIN rail mounting adapter LEC-D0 (with 2 mounting screws)

This should be used when the DIN rail mounting adapter is mounted onto a screw mounting type controller afterward.

# JXC51/61 Series

## Dimensions



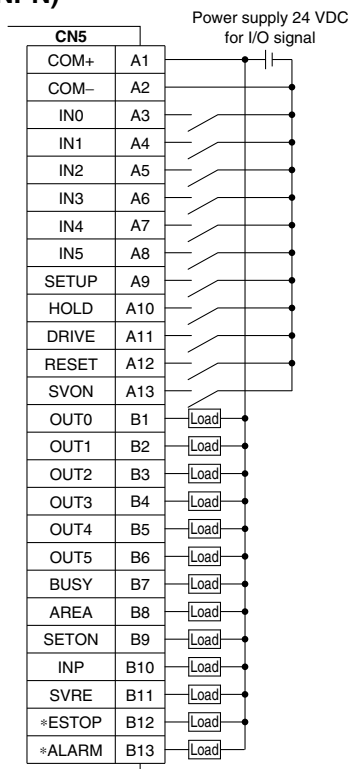
## Wiring Example

### Parallel I/O Connector

- \* When you connect a PLC to the parallel I/O connector, use the I/O cable (LEC-CN5-□).
- \* The wiring changes depending on the type of parallel I/O (NPN or PNP).

### Wiring diagram

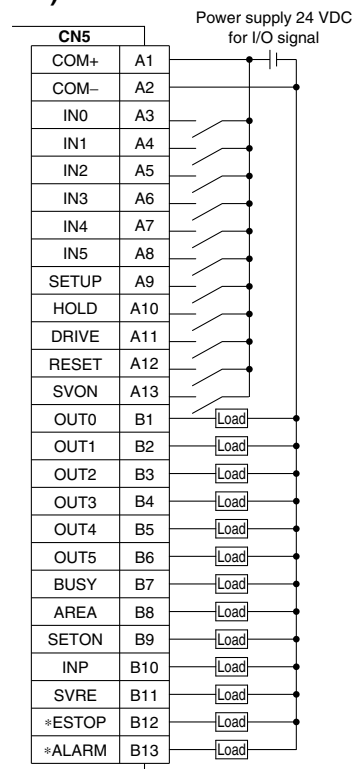
#### JXC51□□-□ (NPN)



### Input Signal

Name	Details
COM+	Connects the power supply 24 V for input/output signal
COM-	Connects the power supply 0 V for input/output signal
IN0 to IN5	Step data specified bit no. (Input is instructed by combining IN0 to 5.)
SETUP	Instruction to return to origin
HOLD	Temporarily stops operation
DRIVE	Instruction to drive
RESET	Resets alarm and interrupts operation
SVON	Servo ON instruction

#### JXC61□□-□ (PNP)



### Output Signal

Name	Details
OUT0 to OUT5	Outputs the step data no. during operation
BUSY	Outputs when the actuator is moving
AREA	Outputs within the step data area output setting range
SETON	Outputs when returning to origin
INP	Outputs when target position or target force is reached (Turns on when the positioning or pushing is completed.)
SVRE	Outputs when servo is on
*ESTOP*1	OFF when EMG stop is instructed
*ALARM*1	OFF when alarm is generated

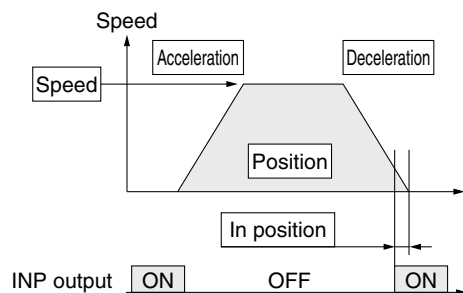
\*1 Signal of negative-logic circuit (N.C.)

## Step Data Setting

### 1. Step data setting for positioning

In this setting, the actuator moves toward and stops at the target position.

The following diagram shows the setting items and operation. The setting items and set values for this operation are stated below.



◎ : Need to be set.  
○ : Need to be adjusted as required.  
— : Setting is not required.

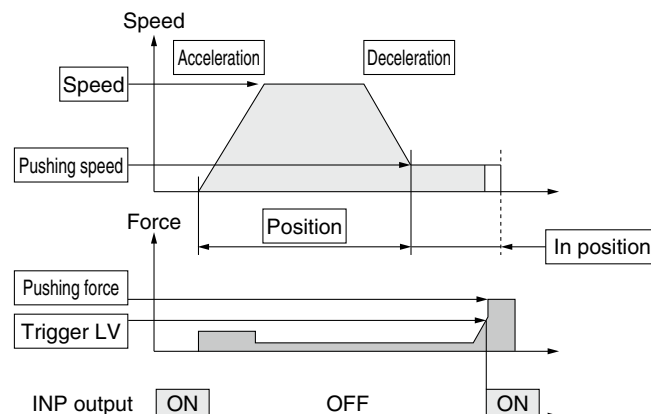
#### Step Data (Positioning)

Necessity	Item	Details
◎	Movement MOD	When the absolute position is required, set Absolute. When the relative position is required, set Relative.
◎	Speed	Transfer speed to the target position
◎	Position	Target position
○	Acceleration	Parameter which defines how rapidly the actuator reaches the speed set. The higher the set value, the faster it reaches the speed set.
○	Deceleration	Parameter which defines how rapidly the actuator comes to stop. The higher the set value, the quicker it stops.
◎	Pushing force	Set 0. (If values 1 to 100 are set, the operation will be changed to the pushing operation.)
—	Trigger LV	Setting is not required.
—	Pushing speed	Setting is not required.
○	Moving force	Max. torque during the positioning operation (No specific change is required.)
○	Area 1, Area 2	Condition that turns on the AREA output signal.
○	In position	Condition that turns on the INP output signal. When the actuator enters the range of [in position], the INP output signal turns on. (It is unnecessary to change this from the initial value.) When it is necessary to output the arrival signal before the operation is completed, make the value larger.

### 2. Step data setting for pushing

The actuator moves toward the pushing start position, and when it reaches that position, it starts pushing with the set force or less.

The following diagram shows the setting items and operation. The setting items and set values for this operation are stated below.



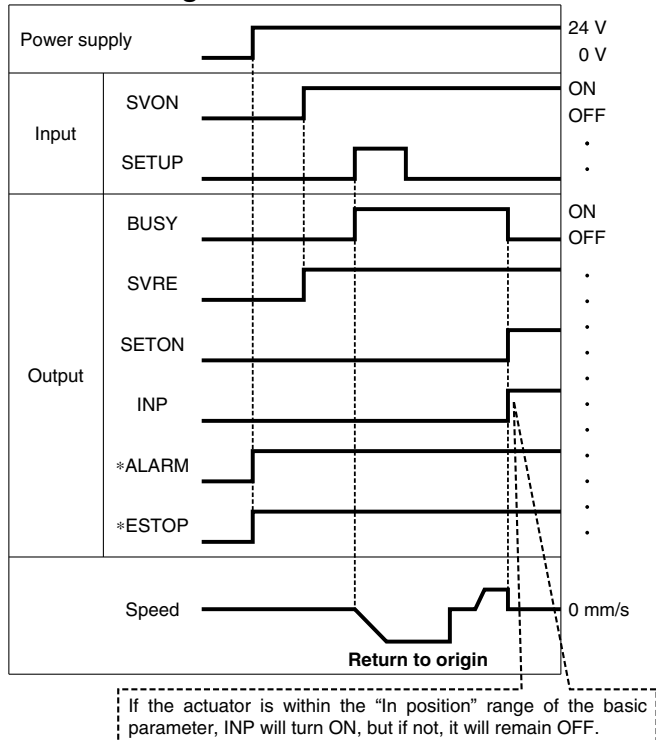
◎ : Need to be set.  
○ : Need to be adjusted as required.

#### Step Data (Pushing)

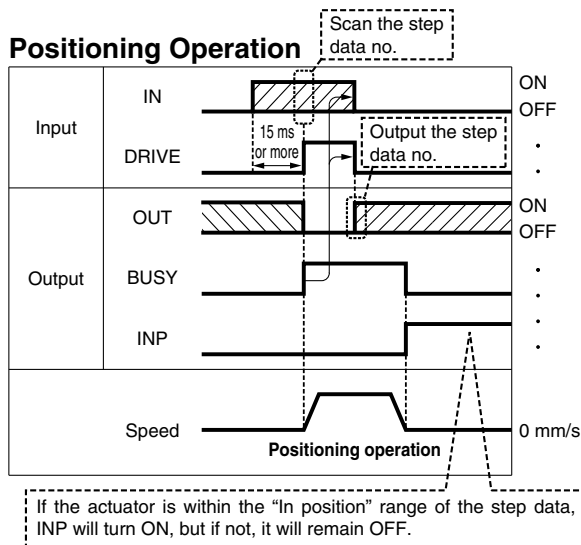
Necessity	Item	Details
◎	Movement MOD	When the absolute position is required, set Absolute. When the relative position is required, set Relative.
◎	Speed	Transfer speed to the pushing start position
◎	Position	Pushing start position
○	Acceleration	Parameter which defines how rapidly the actuator reaches the speed set. The higher the set value, the faster it reaches the speed set.
○	Deceleration	Parameter which defines how rapidly the actuator comes to stop. The higher the set value, the quicker it stops.
◎	Pushing force	Pushing force ratio is defined. The setting range differs depending on the electric actuator type. Refer to the operation manual for the electric actuator.
◎	Trigger LV	Condition that turns on the INP output signal. The INP output signal turns on when the generated force exceeds the value. Trigger level should be the pushing force or less.
○	Pushing speed	Pushing speed during pushing. When the speed is set fast, the electric actuator and workpieces might be damaged due to the impact when they hit the end, so this set value should be smaller. Refer to the operation manual for the electric actuator.
○	Moving force	Max. torque during the positioning operation (No specific change is required.)
○	Area 1, Area 2	Condition that turns on the AREA output signal.
◎	In position	Transfer distance during pushing. If the transferred distance exceeds the setting, it stops even if it is not pushing. If the transfer distance is exceeded, the INP output signal will not turn on.

## Signal Timing

### Return to Origin

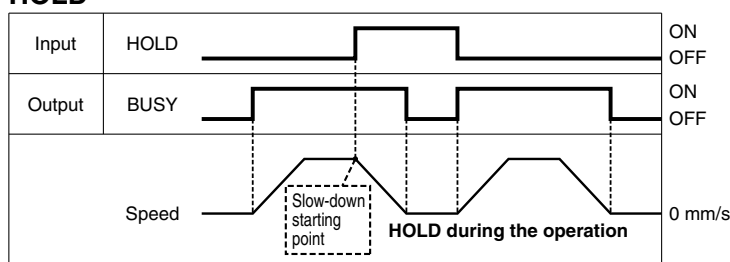


### Positioning Operation



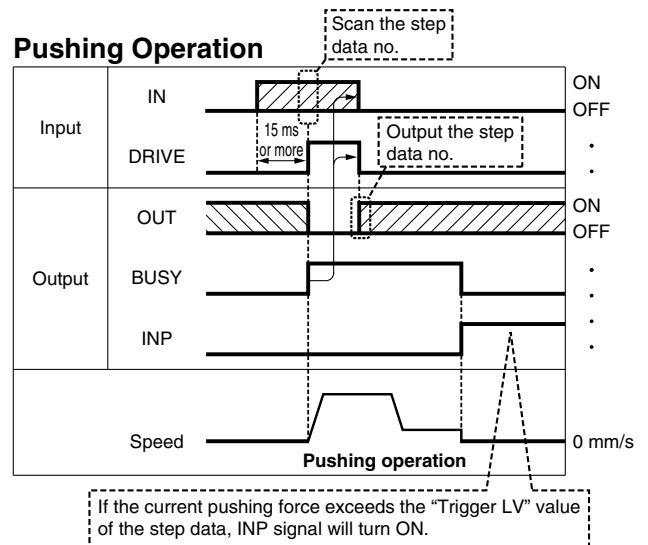
\* "OUT" is output when "DRIVE" is changed from ON to OFF.  
Refer to the operation manual for details on the controller for the LEM series.  
(When power supply is applied, "DRIVE" or "RESET" is turned ON or \*ESTOP" is turned OFF, all of the "OUT" outputs are OFF.)

### HOLD

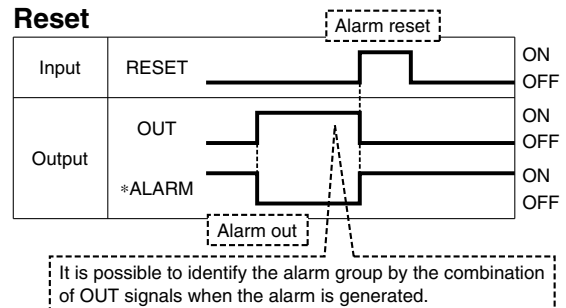


\* When the actuator is within the "In position" range in the pushing operation, it does not stop even if HOLD signal is input.

### Pushing Operation



### Reset



\* \*ALARM" is expressed as a negative-logic circuit.

# JXC51/61 Series

## Actuator Cable

[Robotic cable, standard cable for step motor (Servo/24 VDC)]

LE-CP-1-□

Cable length (L) [m]

1	1.5
3	3
5	5
8	8*1
A	10*1
B	15*1
C	20*1

\*1 Produced upon receipt of order (Robotic cable only)

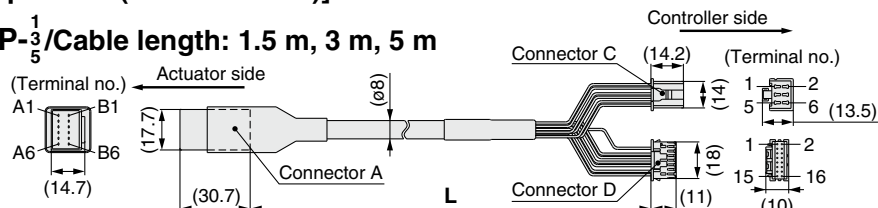
Cable type

Nil	Robotic cable (Flexible cable)
S	Standard cable

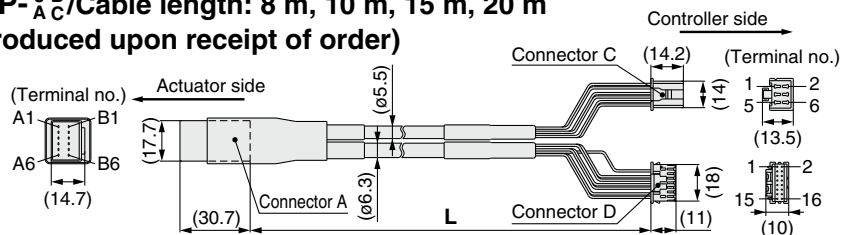
### Weight

Product no.	Weight [g]	Note
LE-CP-1-S	190	Standard cable
LE-CP-3-S	280	
LE-CP-5-S	460	
LE-CP-1	140	Robotic cable
LE-CP-3	260	
LE-CP-5	420	
LE-CP-8	790	
LE-CP-A	980	
LE-CP-B	1460	
LE-CP-C	1940	

LE-CP- $\frac{1}{5}$ /Cable length: 1.5 m, 3 m, 5 m



LE-CP- $\frac{8}{A}$ /Cable length: 8 m, 10 m, 15 m, 20 m  
(\*1 Produced upon receipt of order)



Signal	Connector A terminal no.	Cable color	Connector C terminal no.
A	B-1	Brown	2
A	A-1	Red	1
B	B-2	Orange	6
B	A-2	Yellow	5
COM-A/COM	B-3	Green	3
COM-B/-	A-3	Blue	4
Signal	Connector A terminal no.	Cable color	Connector D terminal no.
Vcc	B-4	Brown	12
GND	A-4	Black	13
A	B-5	Red	7
A	A-5	Black	6
B	B-6	Orange	9
B	A-6	Black	8
			3

[Robotic cable, standard cable with lock and sensor for step motor (Servo/24 VDC)]

LE-CP-1-B-□

Cable length (L) [m]

1	1.5
3	3
5	5
8	8*1
A	10*1
B	15*1
C	20*1

\*1 Produced upon receipt of order (Robotic cable only)

With lock and sensor

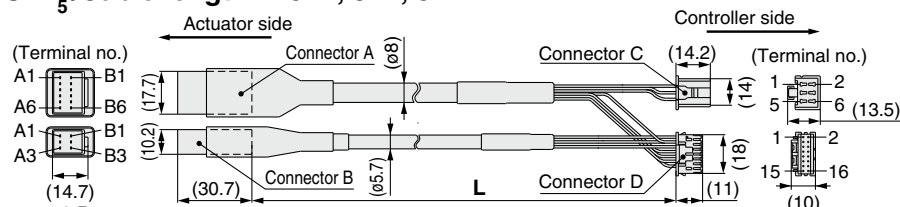
Cable type

Nil	Robotic cable (Flexible cable)
S	Standard cable

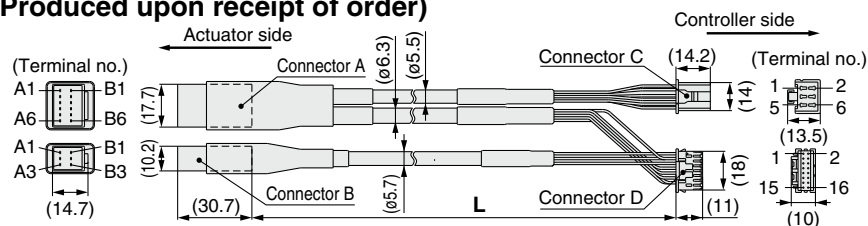
### Weight

Product no.	Weight [g]	Note
LE-CP-1-B-S	240	Standard cable
LE-CP-3-B-S	380	
LE-CP-5-B-S	630	
LE-CP-1-B	190	Robotic cable
LE-CP-3-B	360	
LE-CP-5-B	590	
LE-CP-8-B	1060	
LE-CP-A-B	1320	
LE-CP-B-B	1920	
LE-CP-C-B	2620	

LE-CP- $\frac{1}{5}$ /Cable length: 1.5 m, 3 m, 5 m



LE-CP- $\frac{8}{A}$ /Cable length: 8 m, 10 m, 15 m, 20 m  
(\*1 Produced upon receipt of order)

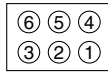
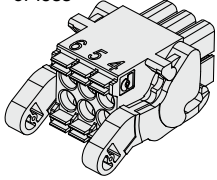


Signal	Connector A terminal no.	Cable color	Connector C terminal no.
A	B-1	Brown	2
A	A-1	Red	1
B	B-2	Orange	6
B	A-2	Yellow	5
COM-A/COM	B-3	Green	3
COM-B/-	A-3	Blue	4
Signal	Connector A terminal no.	Cable color	Connector D terminal no.
Vcc	B-4	Brown	12
GND	A-4	Black	13
A	B-5	Red	7
A	A-5	Black	6
B	B-6	Orange	9
B	A-6	Black	8
			3
Signal	Connector B terminal no.	Cable color	Connector C terminal no.
Lock (+)	B-1	Red	4
Lock (-)	A-1	Black	5
Sensor (+)	B-3	Brown	1
Sensor (-)	A-3	Blue	2

## Options

### ■ Power supply plug JXC-CPW

- \* The power supply plug is an accessory.
- <Applicable cable size> AWG20 (0.5 mm<sup>2</sup>), cover diameter 2.0 mm or less



- ① C 24V    ④ 0V
- ② M 24V    ⑤ N.C.
- ③ EMG      ⑥ LK RLS

### Power supply plug terminal

Terminal name	Function	Details
0V	Common supply (-)	The M 24V terminal, C 24V terminal, EMG terminal, and LK RLS terminal are common (-).
M 24V	Motor power supply (+)	Motor power supply (+) of the controller
C 24V	Control power supply (+)	Control power supply (+) of the controller
EMG	Stop (+)	Connection terminal of the external stop circuit
LK RLS	Lock release (+)	Connection terminal of the lock release switch

### ■ Communication cable for controller setting

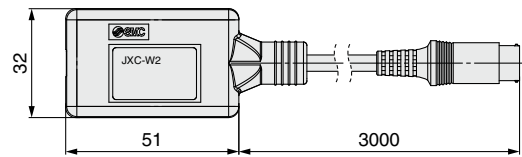
- Controller setting software
  - USB driver
- Download from SMC's website:  
<https://www.smcworld.com>

#### Hardware Requirements

OS	Windows®7, Windows®8.1, Windows®10
Communication interface	USB 1.1 or USB 2.0 ports
Display	1024 x 768 or more

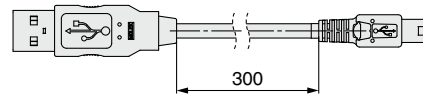
- \* Windows®7, Windows®8.1, and Windows®10 are registered trademarks of Microsoft Corporation in the United States.

#### ① Communication cable JXC-W2A-C



- \* It can be connected to the controller directly.

#### ② USB cable LEC-W2-U



### ■ Teaching box

**LEC-T1-3 J G**

Teaching box

Cable length [m]  
**3**      3

Initial language

<b>J</b>	Japanese
<b>E</b>	English

Enable switch

<b>Nil</b>	None
<b>S</b>	Equipped with enable switch

- \* Interlock switch for jog and test function

Stop switch

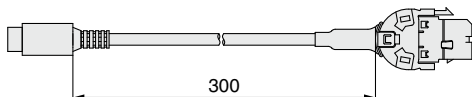
<b>G</b>	Equipped with stop switch
----------	---------------------------

- \* The displayed language can be changed to English or Japanese.

### Specifications

Item	Description
Switch	Stop switch, Enable switch (Option)
Cable length [m]	3
Enclosure	IP64 (Except connector)
Operating temperature range [°C]	5 to 50
Operating humidity range [%RH]	90 or less (No condensation)
Weight [g]	350 (Except cable)

### ■ Conversion cable P5062-5 (Cable length: 300 mm)



- \* To connect the teaching box (LEC-T1-3□G□) to the controller, a conversion cable is required.

# JXC51/61 Series

## Option: I/O Cable

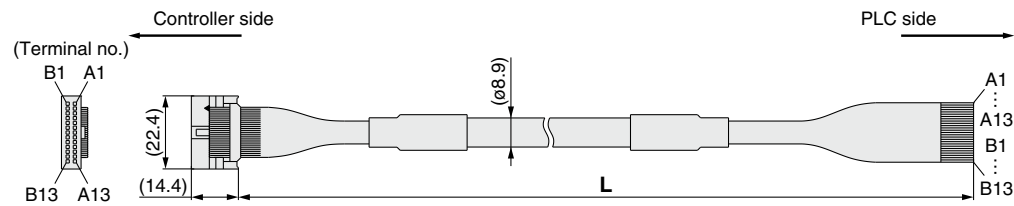
### LEC – CN5 – 1

Cable length (L) [m]	
1	1.5
3	3
5	5

\* Conductor size: AWG28

#### Weight

Product no.	Weight [g]
LEC-CN5-1	170
LEC-CN5-3	320
LEC-CN5-5	520



Connector pin no.	Insulation color	Dot mark	Dot color
A1	Light brown	■	Black
A2	Light brown	■	Red
A3	Yellow	■	Black
A4	Yellow	■	Red
A5	Light green	■	Black
A6	Light green	■	Red
A7	Gray	■	Black
A8	Gray	■	Red
A9	White	■	Black
A10	White	■	Red
A11	Light brown	■ ■	Black
A12	Light brown	■ ■	Red
A13	Yellow	■ ■	Black

Connector pin no.	Insulation color	Dot mark	Dot color
B1	Yellow	■ ■	Red
B2	Light green	■ ■	Black
B3	Light green	■ ■	Red
B4	Gray	■ ■	Black
B5	Gray	■ ■	Red
B6	White	■ ■	Black
B7	White	■ ■	Red
B8	Light brown	■ ■ ■	Black
B9	Light brown	■ ■ ■	Red
B10	Yellow	■ ■ ■	Black
B11	Yellow	■ ■ ■	Red
B12	Light green	■ ■ ■	Black
B13	Light green	■ ■ ■	Red
—	Shield		

# Step Motor Controller

## JXCE1/91/P1/D1/L1/M1 Series



### How to Order

**JXC D 1 7 T -**

#### Communication protocol

<b>E</b>	EtherCAT®
<b>9</b>	EtherNet/IP™
<b>P</b>	PROFINET
<b>D</b>	DeviceNet™
<b>L</b>	IO-Link
<b>M</b>	CC-Link

#### For single axis

#### Mounting

<b>7</b>	Screw mounting
<b>8</b> *1	DIN rail

\*1 The DIN rail is not included. It must be ordered separately. (Refer to page 21.)

#### Option

<b>Nil</b>	Without option
<b>S</b>	With straight type communication plug
<b>T</b>	With T-branch type communication plug

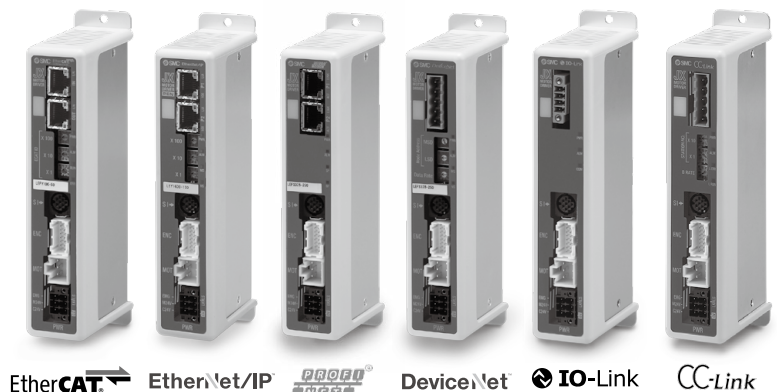
\* Select "Nil" for anything other than JXCD1 and JXCM1.

#### Actuator part number

Without cable specifications and actuator options  
Example: Enter "LEFS16B-100"  
for the LEFS16B-100B-S1□□.

**BC** Blank controller\*1

\*1 Requires dedicated software (JXC-BCW)



JXC51/61 Series

JXCE1/91/P1/D1/L1/M1 Series

### The controller is sold as single unit after the compatible actuator is set.

Confirm that the combination of the controller and actuator is correct.

- ① Check the actuator label for the model number. This number should match that of the controller.

**LEFS16B-400**

①



\* Refer to the operation manual for using the products. Please download it via our website: <https://www.smcworld.com>

### Precautions for blank controllers (JXC□1□□-BC)

A blank controller is a controller to which the customer can write the data of the actuator it is to be combined and used with. Use the dedicated software (JXC-BCW) for data writing.

- Please download the dedicated software (JXC-BCW) via our website.
- Order the communication cable for controller setting (JXC-W2A-C) and USB cable (LEC-W2-U) separately to use this software.

SMC website: <https://www.smcworld.com>

# JXCE1/91/P1/D1/L1/M1 Series

## Specifications

Model		JXCE1	JXC91	JXCP1	JXCD1	JXCL1	JXCM1	
Network		EtherCAT®	EtherNet/IP™	PROFINET	DeviceNet™	IO-Link	CC-Link	
Compatible motor		Step motor (Servo/24 VDC)						
Power supply		Power voltage: 24 VDC ±10%						
Current consumption (Controller)		200 mA or less	130 mA or less	200 mA or less	100 mA or less	100 mA or less	100 mA or less	
Compatible encoder		Incremental A/B phase (800 pulse/rotation)						
Communication specifications	Applicable system	Protocol	EtherCAT®*2	EtherNet/IP™*2	PROFINET*2	DeviceNet™	IO-Link	CC-Link
		Version*1	Conformance Test Record V.1.2.6	Volume 1 (Edition 3.14) Volume 2 (Edition 1.15)	Specification Version 2.32	Volume 1 (Edition 3.14) Volume 3 (Edition 1.13)	Version 1.1 Port Class A	Ver. 1.10
	Communication speed	100 Mbps*2	10/100 Mbps*2 (Automatic negotiation)	100 Mbps*2	125/250/500 kbps	230.4 kbps (COM3)	156 kbps, 625 kbps, 2.5 Mbps, 5 Mbps, 10 Mbps	
	Configuration file*3	ESI file	EDS file	GSDML file	EDS file	IODD file	CSP+ file	
	I/O occupation area	Input 20 bytes Output 36 bytes	Input 36 bytes Output 36 bytes	Input 36 bytes Output 36 bytes	Input 4, 10, 20 bytes Output 4, 12, 20, 36 bytes	Input 14 bytes Output 22 bytes	1 station, 2 stations, 4 stations	
	Terminating resistor	Not included						
Memory		EEPROM						
LED indicator		PWR, RUN, ALM, ERR	PWR, ALM, MS, NS	PWR, ALM, SF, BF	PWR, ALM, MS, NS	PWR, ALM, COM	PWR, ALM, L ERR, L RUN	
Cable length [m]		Actuator cable: 20 or less						
Cooling system		Natural air cooling						
Operating temperature range [°C]		0 to 55 (No freezing)*4						
Operating humidity range [%RH]		90 or less (No condensation)						
Insulation resistance [MΩ]		Between all external terminals and the case: 50 (500 VDC)						
Weight [g]		220 (Screw mounting) 240 (DIN rail mounting)	210 (Screw mounting) 230 (DIN rail mounting)	220 (Screw mounting) 240 (DIN rail mounting)	210 (Screw mounting) 230 (DIN rail mounting)	190 (Screw mounting) 210 (DIN rail mounting)	170 (Screw mounting) 190 (DIN rail mounting)	

\*1 Please note that versions are subject to change.

\*2 Use a shielded communication cable with CAT5 or higher for the PROFINET, EtherNet/IP™, and EtherCAT®.

\*3 The files can be downloaded from the SMC website.

\*4 The operating temperature range for both controller version 1 products and controller version 2 products is 0 to 40°C. Refer to the **Web Catalog** for details on identifying controller version symbols.

### ■Trademark

EtherNet/IP™ is a trademark of ODVA.

DeviceNet™ is a trademark of ODVA.

EtherCAT® is registered trademark and patented technology, licensed by Beckhoff Automation GmbH, Germany.

## Example of Operation Command

In addition to the step data input of 64 points maximum in each communication protocol, the changing of each parameter can be performed in real time via numerical data defined operation.

\* Numerical values other than "Moving force," "Area 1," and "Area 2" can be used to perform operation under numerical instructions from JXCL1.

### <Application example> Movement between 2 points

No.	Movement mode	Speed	Position	Acceleration	Deceleration	Pushing force	Trigger LV	Pushing speed	Moving force	Area 1	Area 2	In position
0	1: Absolute	100	10	3000	3000	0	0	0	100	0	0	0.50
1	1: Absolute	100	100	3000	3000	0	0	0	100	0	0	0.50

### <Step no. defined operation>

Sequence 1: Servo ON instruction

Sequence 2: Instruction to return to origin

Sequence 3: Specify step data No. 0 to input the DRIVE signal.

Sequence 4: Specify step data No. 1 after the DRIVE signal has been temporarily turned OFF to input the DRIVE signal.

### <Numerical data defined operation>

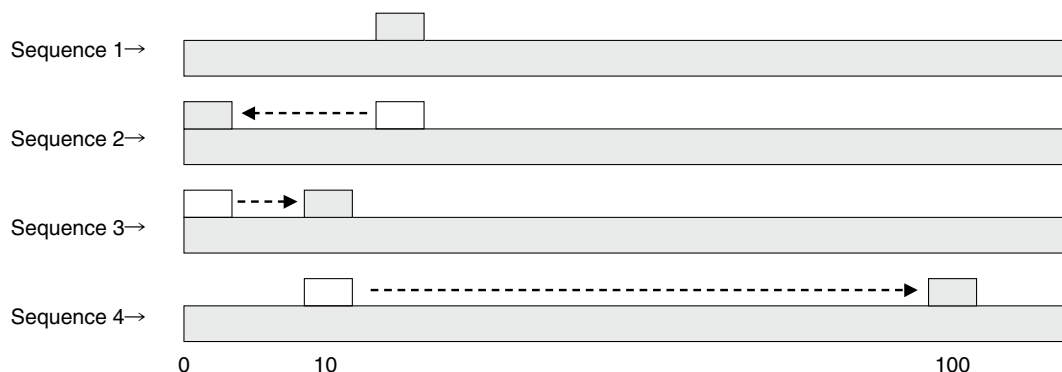
Sequence 1: Servo ON instruction

Sequence 2: Instruction to return to origin

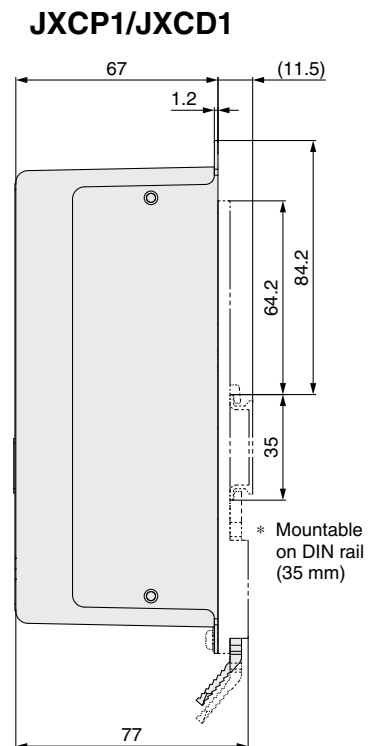
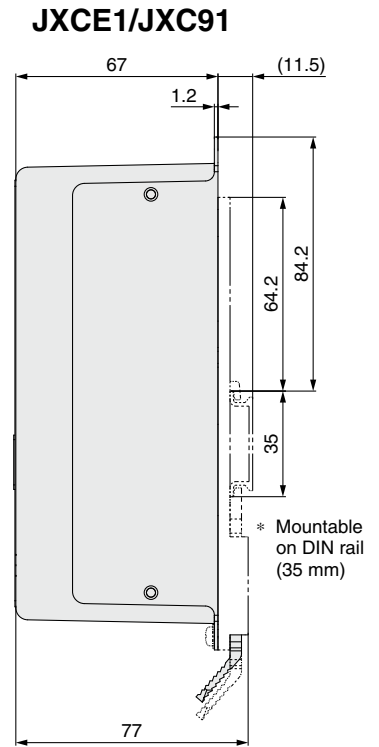
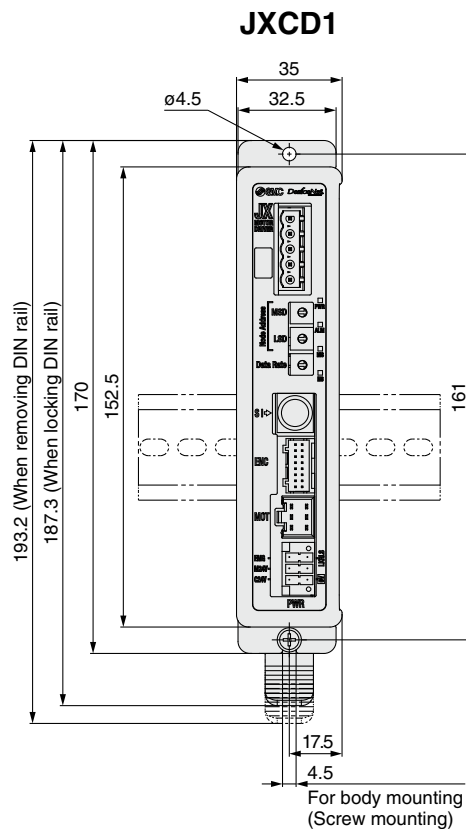
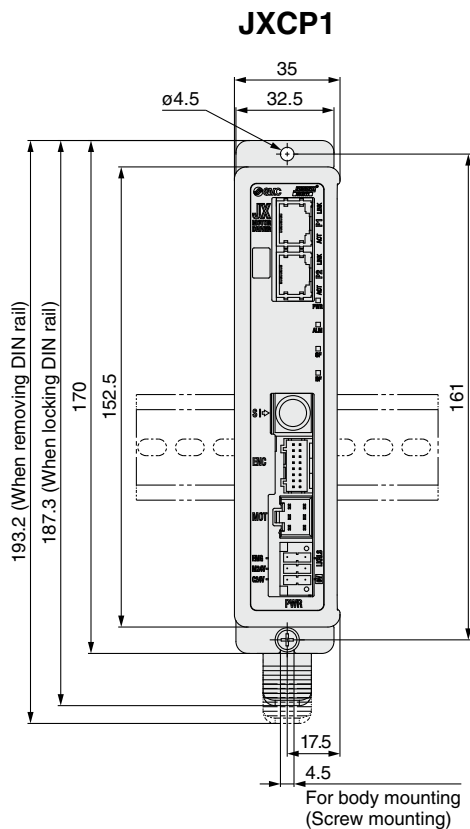
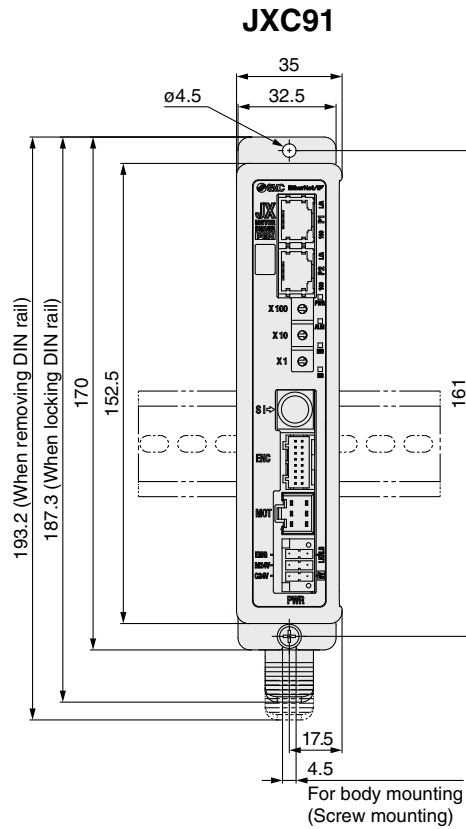
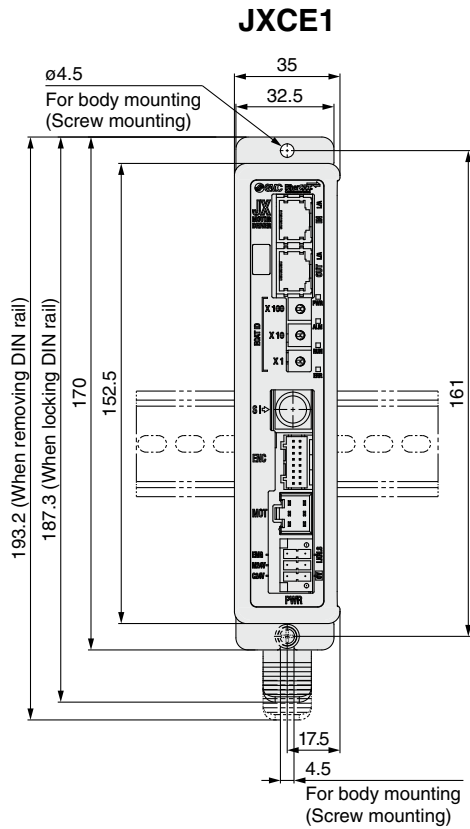
Sequence 3: Specify step data No. 0 and turn ON the input instruction flag (position). Input 10 in the target position. Subsequently the start flag turns ON.

Sequence 4: Turn ON step data No. 0 and the input instruction flag (position) to change the target position to 100 while the start flag is ON.

The same operation can be performed with any operation command.



## Dimensions



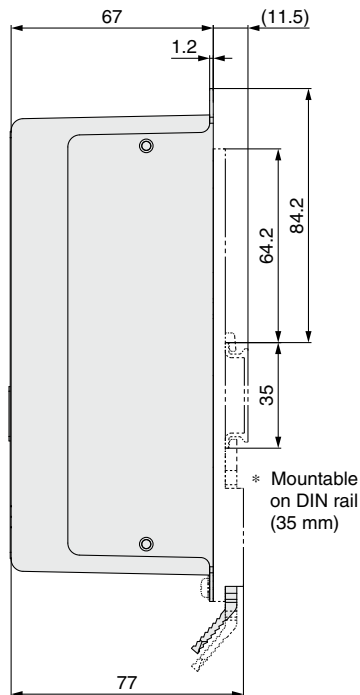
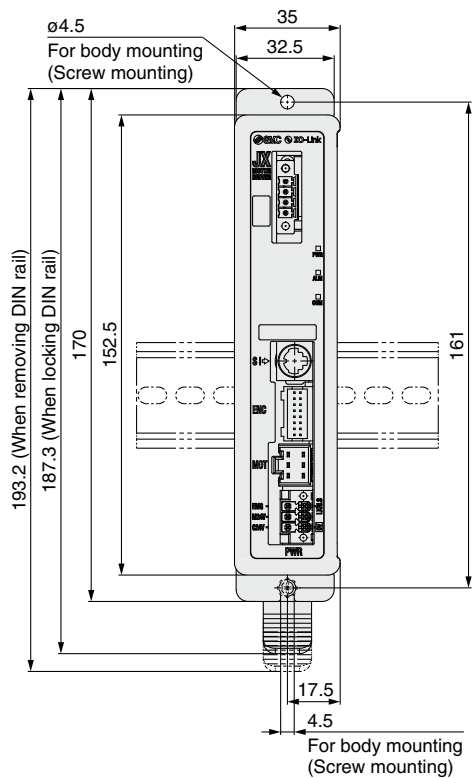
JXC51/61 Series

JXCE1/91/P1/D1/L1/M1 Series

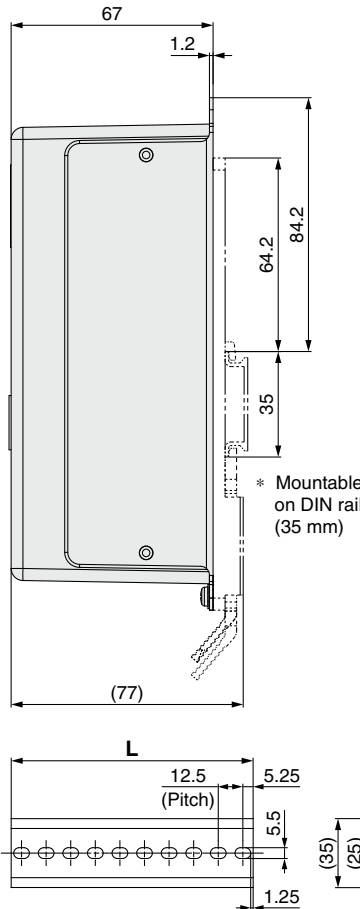
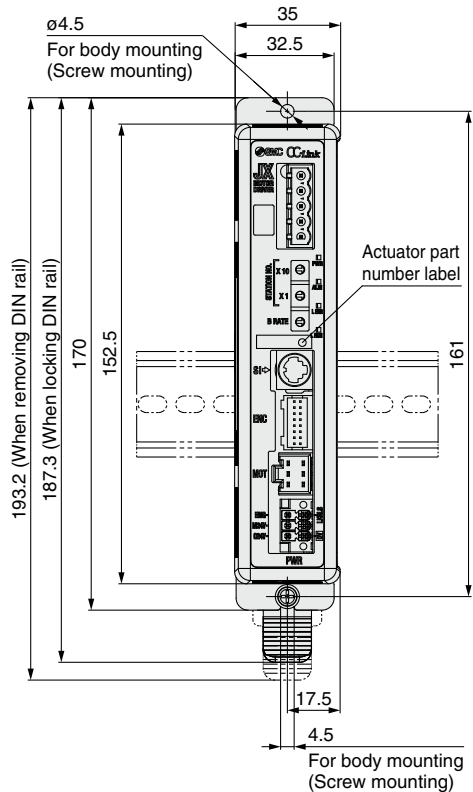
## ***JXCE1/91/P1/D1/L1/M1 Series***

## Dimensions

# JXCL1



# JXCM1



### L Dimensions [mm]

No.	1	2	3	4	5	6	7	8	9	10	11	12	13	14	15	16	17	18	19	20
L	23	35.5	48	60.5	73	85.5	98	110.5	123	135.5	148	160.5	173	185.5	198	210.5	223	235.5	248	260.5
No.	21	22	23	24	25	26	27	28	29	30	31	32	33	34	35	36	37	38	39	40
L	273	285.5	298	310.5	323	335.5	348	360.5	373	385.5	398	410.5	423	435.5	448	460.5	473	485.5	498	510.5

## Actuator Cable

[Robotic cable, standard cable for step motor (Servo/24 VDC)]

**LE-CP-1-** 1 -  

Cable length (L) [m]

1	1.5
3	3
5	5
8	8*1
A	10*1
B	15*1
C	20*1

\*1 Produced upon receipt of order (Robotic cable only)

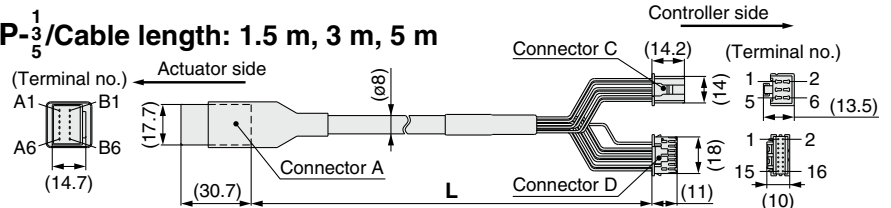
**Cable type**

Nil	Robotic cable (Flexible cable)
S	Standard cable

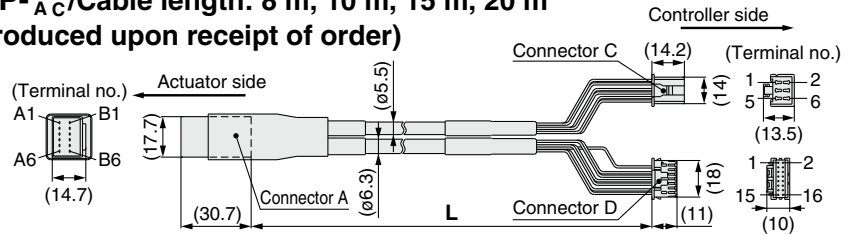
### Weight

Product no.	Weight [g]	Note
LE-CP-1-S	190	Standard cable
LE-CP-3-S	280	
LE-CP-5-S	460	
LE-CP-1	140	Robotic cable
LE-CP-3	260	
LE-CP-5	420	
LE-CP-8	790	
LE-CP-A	980	
LE-CP-B	1460	
LE-CP-C	1940	

**LE-CP- $\frac{1}{5}$ /Cable length: 1.5 m, 3 m, 5 m**



**LE-CP- $\frac{8}{AC}$ /Cable length: 8 m, 10 m, 15 m, 20 m**  
(\*1 Produced upon receipt of order)



Signal	Connector A terminal no.	Cable color	Connector C terminal no.
A	B-1	Brown	2
A	A-1	Red	1
B	B-2	Orange	6
B	A-2	Yellow	5
COM-A/COM	B-3	Green	3
COM-B/-	A-3	Blue	4
Signal	Connector A terminal no.	Cable color	Connector D terminal no.
Vcc	B-4	Brown	12
GND	A-4	Black	13
A	B-5	Red	7
A	A-5	Black	6
B	B-6	Orange	9
B	A-6	Black	8
			3

[Robotic cable, standard cable with lock and sensor for step motor (Servo/24 VDC)]

**LE-CP-1-B-** 1 - B -  

Cable length (L) [m]

1	1.5
3	3
5	5
8	8*1
A	10*1
B	15*1
C	20*1

\*1 Produced upon receipt of order (Robotic cable only)

**With lock and sensor**

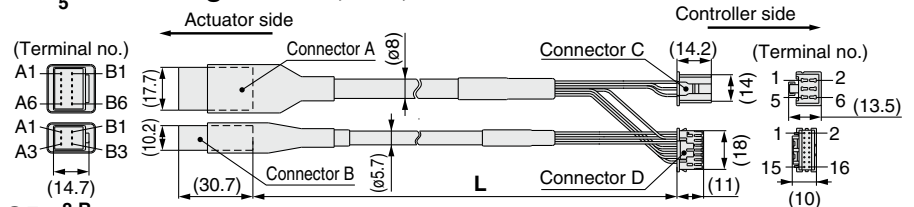
**Cable type**

Nil	Robotic cable (Flexible cable)
S	Standard cable

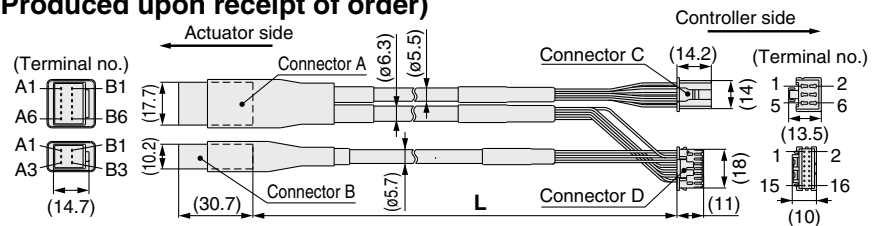
### Weight

Product no.	Weight [g]	Note
LE-CP-1-B-S	240	Standard cable
LE-CP-3-B-S	380	
LE-CP-5-B-S	630	
LE-CP-1-B	190	Robotic cable
LE-CP-3-B	360	
LE-CP-5-B	590	
LE-CP-8-B	1060	
LE-CP-A-B	1320	
LE-CP-B-B	1920	
LE-CP-C-B	2620	

**LE-CP- $\frac{1}{5}$ /Cable length: 1.5 m, 3 m, 5 m**



**LE-CP- $\frac{8}{AC}$ /Cable length: 8 m, 10 m, 15 m, 20 m**  
(\*1 Produced upon receipt of order)



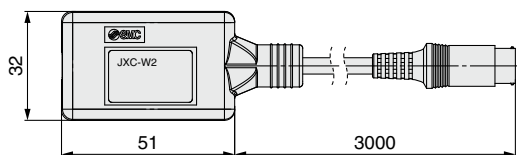
Signal	Connector A terminal no.	Cable color	Connector C terminal no.
A	B-1	Brown	2
A	A-1	Red	1
B	B-2	Orange	6
B	A-2	Yellow	5
COM-A/COM	B-3	Green	3
COM-B/-	A-3	Blue	4
Signal	Connector A terminal no.	Cable color	Connector D terminal no.
Vcc	B-4	Brown	12
GND	A-4	Black	13
A	B-5	Red	7
A	A-5	Black	6
B	B-6	Orange	9
B	A-6	Black	8
			3
Signal	Connector B terminal no.	Cable color	Connector C terminal no.
Lock (+)	B-1	Red	4
Lock (-)	A-1	Black	5
Sensor (+)	B-3	Brown	1
Sensor (-)	A-3	Blue	2

# JXCE1/91/P1/D1/L1/M1 Series

## Options

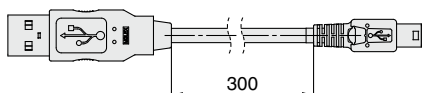
### ■ Communication cable for controller setting

#### ① Communication cable JXC-W2A-C



\* It can be connected to the controller directly.

#### ② USB cable LEC-W2-U



<Controller setting software/USB driver>

- Controller setting software
- USB driver (For JXC-W2A-C)

Download from SMC's website: <https://www.smcworld.com>

#### Hardware Requirements

OS	Windows®7, Windows®8.1, Windows®10
Communication interface	USB 1.1 or USB 2.0 ports
Display	1024 x 768 or more

\* Windows®7, Windows®8.1 and Windows®10 are registered trademarks of Microsoft Corporation in the United States.

### ■ DIN rail mounting adapter LEC-3-D0

\* With 2 mounting screws

This should be used when the DIN rail mounting adapter is mounted onto a screw mounting type controller afterward.

### ■ DIN rail AXT100-DR-□

\* For □, enter a number from the No. line in the table on page 19. Refer to the dimension drawings on pages 18 and 19 for the mounting dimensions.

### ■ Teaching box

LEC-T1-3□J□G□

Teaching box

Cable length [m]
3 3

Initial language

J	Japanese
E	English

\* The displayed language can be changed to English or Japanese.

Enable switch (Option)

● Enable switch

Nil	None
S	Equipped with enable switch

\* Interlock switch for jog and test function

● Stop switch

G	Equipped with stop switch
---	---------------------------

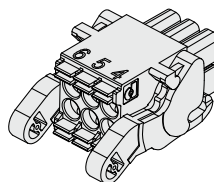


#### Specifications

Item	Description
Switch	Stop switch, Enable switch (Option)
Cable length [m]	3
Enclosure	IP64 (Except connector)
Operating temperature range [°C]	5 to 50
Operating humidity range [%RH]	90 or less (No condensation)
Weight [g]	350 (Except cable)

### ■ Power supply plug JXC-CPW

\* The power supply plug is an accessory.



6	5	4
3	2	1

- |         |          |
|---------|----------|
| ① C 24V | ④ 0V     |
| ② M 24V | ⑤ N.C.   |
| ③ EMG   | ⑥ LK RLS |

#### Power supply plug

Terminal name	Function	Details
0V	Common supply (-)	The M 24V terminal, C 24V terminal, EMG terminal, and LK RLS terminal are common (-).
M 24V	Motor power supply (+)	Motor power supply (+) of the controller
C 24V	Control power supply (+)	Control power supply (+) of the controller
EMG	Stop (+)	Connection terminal of the external stop circuit
LK RLS	Lock release (+)	Connection terminal of the lock release switch

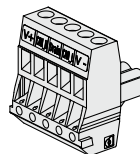
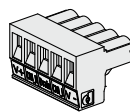
### ■ Communication plug connector

#### For DeviceNet™

Straight type  
JXC-CD-S

T-branch type  
JXC-CD-T

Communication plug connector for DeviceNet™

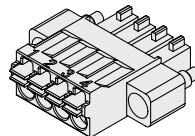


Terminal name	Details
V+	Power supply (+) for DeviceNet™
CAN_H	Communication wire (High)
Drain	Grounding wire/Shielded wire
CAN_L	Communication wire (Low)
V-	Power supply (-) for DeviceNet™

#### For IO-Link

Straight type  
JXC-CL-S

\* The communication plug connector for IO-Link is an accessory.



Communication plug connector for IO-Link

Terminal no.	Terminal name	Details
1	L+	+24 V
2	NC	N/A
3	L-	0 V
4	C/Q	IO-Link signal

#### For CC-Link

Straight type  
LEC-CMJ-S

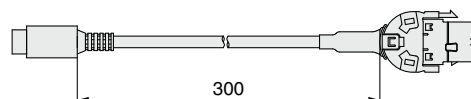
T-branch type  
LEC-CMJ-T

Communication plug connector for CC-Link



Terminal name	Details
DA	CC-Link communication line A
DB	CC-Link communication line B
DG	CC-Link ground line
SLD	CC-Link shield
FG	Frame ground

### ■ Conversion cable P5062-5 (Cable length: 300 mm)



\* To connect the teaching box (LEC-T1-3□J□G□) or controller setting kit (LEC-W2) to the controller, a conversion cable is required.



# ***JXCE1/91/P1/D1/L1/M1/51/61 Series***

## **Precautions Relating to Differences in Controller Versions**

**As the controller version of the JXC series differs, the internal parameters are not compatible.**

- If using the JXC□1□-BC, please use the latest version of the JXC-BCW (parameter writing tool).
- There are currently 3 versions available: version 1 products (V1.□ or S1.□), version 2 products (V2.□ or S2.□), and version 3 products (V3.□ or S3.□). Keep in mind that in order to write a backup file (.bkp) to another controller with the JXC-BCW, it needs to be the same version as the controller that created the file. (For example, a backup file created by a version 1 product can only be written to another version 1 product, and so on.)

### **Identifying Version Symbols**

#### **JXC□1 Series Version V3.□ or S3.□ Products**



XR V3.0

##### **Applicable models**

**JXC91□ Series**

XR S3.0 T1.0

##### **Applicable models**

**JXCD1□ Series**  
**JXCE1□ Series**  
**JXCP1□ Series**  
**JXCL1□ Series**  
**JXCM1□ Series**  
**JXC51□ Series**  
**JXC61□ Series**

#### **JXC□1 Series Version V2.□ or S2.□ Products**

WP V2.1

##### **Applicable models**

**JXC91□ Series**

WP S2.2 T1.1

##### **Applicable models**

**JXCD1□ Series**  
**JXCE1□ Series**  
**JXCP1□ Series**  
**JXCL1□ Series**

#### **JXC□1 Series Version V1.□ or S1.□ Products**

XR V1.0

##### **Applicable models**

**JXC91□ Series**


XR S1.0 T1.0


##### **Applicable models**


**JXCD1□ Series**  
**JXCE1□ Series**  
**JXCP1□ Series**  
**JXCL1□ Series**

## Safety Instructions

These safety instructions are intended to prevent hazardous situations and/or equipment damage. These instructions indicate the level of potential hazard with the labels of “**Caution**,” “**Warning**” or “**Danger**.” They are all important notes for safety and must be followed in addition to International Standards (ISO/IEC)\*1), and other safety regulations.

 **Caution:** **Caution** indicates a hazard with a low level of risk which, if not avoided, could result in minor or moderate injury.

 **Warning:** **Warning** indicates a hazard with a medium level of risk which, if not avoided, could result in death or serious injury.

 **Danger :** **Danger** indicates a hazard with a high level of risk which, if not avoided, will result in death or serious injury.

\*1) ISO 4414: Pneumatic fluid power – General rules relating to systems.  
ISO 4413: Hydraulic fluid power – General rules relating to systems.  
IEC 60204-1: Safety of machinery – Electrical equipment of machines.  
(Part 1: General requirements)  
ISO 10218-1: Manipulating industrial robots – Safety.  
etc.

### Warning

#### 1. The compatibility of the product is the responsibility of the person who designs the equipment or decides its specifications.

Since the product specified here is used under various operating conditions, its compatibility with specific equipment must be decided by the person who designs the equipment or decides its specifications based on necessary analysis and test results. The expected performance and safety assurance of the equipment will be the responsibility of the person who has determined its compatibility with the product. This person should also continuously review all specifications of the product referring to its latest catalog information, with a view to giving due consideration to any possibility of equipment failure when configuring the equipment.

#### 2. Only personnel with appropriate training should operate machinery and equipment.

The product specified here may become unsafe if handled incorrectly. The assembly, operation and maintenance of machines or equipment including our products must be performed by an operator who is appropriately trained and experienced.

#### 3. Do not service or attempt to remove product and machinery/equipment until safety is confirmed.

1. The inspection and maintenance of machinery/equipment should only be performed after measures to prevent falling or runaway of the driven objects have been confirmed.
2. When the product is to be removed, confirm that the safety measures as mentioned above are implemented and the power from any appropriate source is cut, and read and understand the specific product precautions of all relevant products carefully.
3. Before machinery/equipment is restarted, take measures to prevent unexpected operation and malfunction.

#### 4. Contact SMC beforehand and take special consideration of safety measures if the product is to be used in any of the following conditions.

1. Conditions and environments outside of the given specifications, or use outdoors or in a place exposed to direct sunlight.
2. Installation on equipment in conjunction with atomic energy, railways, air navigation, space, shipping, vehicles, military, medical treatment, combustion and recreation, or equipment in contact with food and beverages, emergency stop circuits, clutch and brake circuits in press applications, safety equipment or other applications unsuitable for the standard specifications described in the product catalog.
3. An application which could have negative effects on people, property, or animals requiring special safety analysis.
4. Use in an interlock circuit, which requires the provision of double interlock for possible failure by using a mechanical protective function, and periodical checks to confirm proper operation.

### Caution

#### 1. The product is provided for use in manufacturing industries.

The product herein described is basically provided for peaceful use in manufacturing industries.  
If considering using the product in other industries, consult SMC beforehand and exchange specifications or a contract if necessary.  
If anything is unclear, contact your nearest sales branch.

## Limited warranty and Disclaimer/ Compliance Requirements

The product used is subject to the following “Limited warranty and Disclaimer” and “Compliance Requirements”.

Read and accept them before using the product.

### Limited warranty and Disclaimer

1. The warranty period of the product is 1 year in service or 1.5 years after the product is delivered, whichever is first.\*2)  
Also, the product may have specified durability, running distance or replacement parts. Please consult your nearest sales branch.
2. For any failure or damage reported within the warranty period which is clearly our responsibility, a replacement product or necessary parts will be provided.  
This limited warranty applies only to our product independently, and not to any other damage incurred due to the failure of the product.
3. Prior to using SMC products, please read and understand the warranty terms and disclaimers noted in the specified catalog for the particular products.

\*2) Vacuum pads are excluded from this 1 year warranty.

A vacuum pad is a consumable part, so it is warranted for a year after it is delivered.  
Also, even within the warranty period, the wear of a product due to the use of the vacuum pad or failure due to the deterioration of rubber material are not covered by the limited warranty.

### Compliance Requirements

1. The use of SMC products with production equipment for the manufacture of weapons of mass destruction (WMD) or any other weapon is strictly prohibited.
2. The exports of SMC products or technology from one country to another are governed by the relevant security laws and regulations of the countries involved in the transaction. Prior to the shipment of a SMC product to another country, assure that all local rules governing that export are known and followed.

### Caution

#### SMC products are not intended for use as instruments for legal metrology.

Measurement instruments that SMC manufactures or sells have not been qualified by type approval tests relevant to the metrology (measurement) laws of each country. Therefore, SMC products cannot be used for business or certification ordained by the metrology (measurement) laws of each country.

## Safety Instructions

Be sure to read the “Handling Precautions for SMC Products” (M-E03-3) and “Operation Manual” before use.