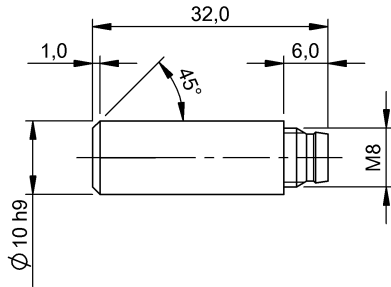


BMF 10E-PS-D-2-SA1-S49 BMF001Z



Display/Operation

Function indicator	no
--------------------	----

Electrical connection

Connection 1	M8x1-Connector, 3-pole
Connection 2	3-pole
Polarity reversal protected	yes
Short-circuit protection	yes

Electrical data

Assured switching field strength Ha	2 kA/m
Hysteresis H max. (% of Hn)	45 %
Load capacitance max. at Ue	1 µF
MTTF (40 °C)	330 a
No-load current I _o max., undamped	10 mA
Operating voltage U _b	10...30 VDC
Output resistance R _a	Open drain
Pollution degree	3
Protected against miswiring	yes
Rated insulation voltage U _i	75 V DC
Rated operating current I _e DC	200 mA
Rated operating voltage U _e DC	24 V
Rated short circuit current	100 A
Rated switch field strength H _n	1.2 kA/m
Residual current I _r max.	80 µA
Switching frequency	10000 Hz
Turn-off delay t _{off} max.	0.05 ms
Turn-on delay t _{on} max.	0.05 ms
Utilization category	DC -13
Voltage drop static max.	3.1 V

Environmental conditions

Ambient temperature	-40...85 °C
Protection type IEC 60529	IP69K

Functional safety

Diagnostic coverage	0 %
Functional safety	no
Mission Time	20 a

General data

Approval/Conformity	CE cULus Ecolab
Basic standard	IEC 60947-5-2

Material

Housing material	Stainless steel (1.4571)
Material sensing surface	Stainless steel (1.4571)

Mechanical data

Dimension	Ø 10 x 32 mm
Size	D10.0

Output/Interface

Switching output	PNP Normally open (NO)
------------------	------------------------

Range/Distance

Ripple max. (% of U _e)	15 %
------------------------------------	------

BMF 10E-PS-D-2-SA1-S49 BMF001Z

Temp. drift max. (% of Hn) 0.3 %

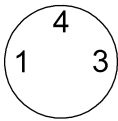
For further information on MTTF/B10d, please refer to the MTTF / B10d Certificate.

Remarks

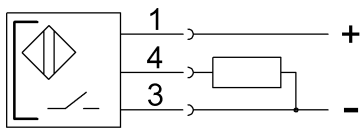
The sensor is functional again after the overload has been eliminated.
The switching distance depends on the magnet used. Switching distances of 20 mm can be achieved.
EMC: External protection circuit required, see instruction for EMC protection circuit 825345.

Specification of the MTTF value and the B10d value do not represent any binding quality and/or life expectancy guarantees.

Connector view



Wiring Diagram



Diagram

