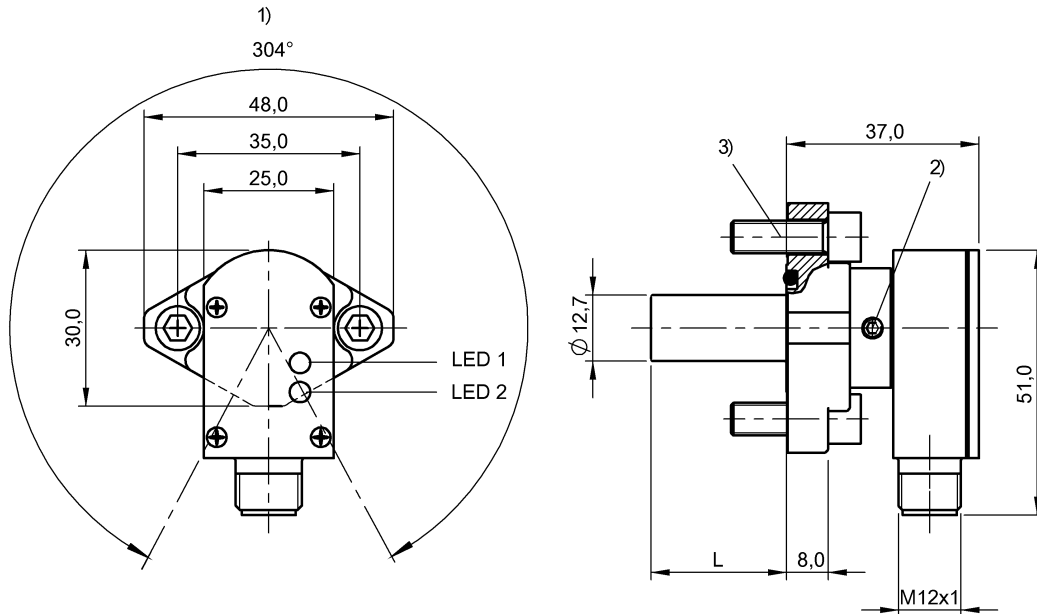


BES 516-300-S295/2.875"-S4 BHS0044



1) Housing rotatable 304° 2) Tightening torque 1...1.5 Nm 3) Tightening torque 16.5 Nm



IND. CONT. EQ
81U2
for use in the secondary of
a class 2 source of supply
Environmental - Type 1 Enclosure



Display/Operation

Function indicator	yes
Power indicator	yes

Electrical connection

Connection	M12x1-Connector, 4-pole, A-coded
Polarity reversal protected	yes
Short-circuit protection	yes

Electrical data

Hysteresis H max. (% of Sr)	15.0 %
Load capacitance max. at Ue	1 µF
Magnetic field strength, interference field	100 kA/m
No-load current I ₀ max., undamped	10 mA
Operating voltage U _b	10...30 VDC
Output resistance R _a	33.0 kOhm + D
Pollution degree	3
Protected against miswiring	yes
Rated insulation voltage U _i	75 V DC
Rated operating current I _e DC	200 mA

Rated operating voltage U _e DC	24 V
Rated short circuit current	100 A
Ready delay t _v max.	40 ms
Repeat accuracy max. (% of Sr)	5.0 %
Residual current I _r max.	80 µA
Switching frequency	10 Hz
Utilization category	DC -13
Voltage drop static max.	2.5 V

Environmental conditions

Ambient temperature	-25...70 °C
Magnetic field immune	magnetic field immune (AC/DC)
Protection type IEC 60529	IP67

General data

Approval/Conformity	CE cULus EAC
Basic standard	IEC 60947-5-2
Scope of delivery	O-ring Ø17.13x2.62 Allen wrench UNC 1/4"- 20x3/4"- 12.9 (2x)
Trademark	Strokemaster

BES 516-300-S295/2.875"-S4 BHS0044

Material

Gasket, material	FPM 90
Housing material	Stainless steel (1.4104) Zinc, Die casting
Material sensing surface	Ceramic
Surface protection	nickel plates

Mechanical data

Dimension	51 x 48 x 73.03 mm
Installation	for flush mounting
Length, tolerance	±0.005 in
Pressure rating max.	207 bar
Pressure rating, note	oil pressure rated
Sealing ring, part number	116143
Sealing ring, size	17.13 x 2.62 mm
Size	D12.7

Output/Interface

Switching output	PNP Normally open (NO)
------------------	------------------------

Range/Distance

Assured operating distance Sa	1.6 mm
Range	2 mm
Rated operating distance Sn	2 mm
Ripple max. (% of Ue)	15 %
Temperature drift max. (% of Sr)	10 %

Remarks

LED 1: Function
LED 2: Operating voltage
The sensor is functional again after the overload has been eliminated.

Connector view



Wiring Diagram

