



CONTACT • REQUEST A QUOTE

PRODUCTS

RESOURCES

COMPANY

PART NUMBER SEARCH

search site



« Control Knobs

Pointer Control Knobs

Series #2300

Control knobs and levers in thermoplastic, with or without flange and index/graduations.

Knobs can be decorated or customized to your specific need.

Perfect knobs for synthesizers and other electronic applications.

A variety of shapes and diameters with plain, tapped bosses or with studs are available with standard threads to fit the application.

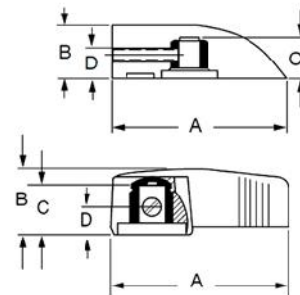
A wide range of soft touch control knobs available in thermoplastic overmold.

Colors available upon request.

Please note: Not all variations available are listed below. Please [contact Customer Service](#) to inquire about all available options.



[REQUEST CAD DRAWING](#) [REQUEST A QUOTE](#)



Item #	Diameter A	Height B	Indicator Line	Inlay	Material Type	Mounting Diameter	Mounting Type	Set Screw Thread	Color
2300	1.2	0.625	No	No	Thermoset	0.25	Plain Molded Hole		BLACK
2300-A	1.2	0.625	No	No	Thermoset	0.25	Bushing		BLACK
2300-E	1.2	0.625	Yes	No	Thermoset	0.25	Knurl Molded Hole		BLACK
2300BJ	1.2	0.625	No	No	Thermoset	0.25	Plain Molded Hole		IVORY
2300BM	1.2	0.625	Yes	No	Thermoset	0.25	Plain Molded Hole		BLACK
2300BQ	1.2	0.625	Yes	No	Thermoset	0.25	Plain Molded Hole		IVORY
2300BR	1.2	0.625	Yes	No	Thermoset	0.25	Plain Molded Hole		WHITE
2300BT	1.2	0.625	Yes	No	Thermoset	0.25	Bushing		BLACK
2300CE	1.2	0.625	Yes	No	Thermoset	0.25	Bushing		BLACK
2300CG	1.2	0.625	Yes	No	Thermoset	0.25	Plain Molded Hole		BLACK
2300CK	1.2	0.625	Yes	No	Thermoset	0.25	Plain Molded Hole		BLACK
2300CM	1.2	0.625	No	No	Thermoset	0.25	Plain Molded Hole		RED
2300CS	1.2	0.625	No	No	Thermoset	0.25	Plain Molded Hole		RED

PRODUCTS

- Knobs
- Handles
- Leveling Feet
- Latches
- Hinges
- Indexing Plungers
- Electronic Enclosures
- Two-Shot / Soft Touch
- Frac Balls
- Custom Molding

RESOURCES

- Engineering Specifications
- Distributor Listing
- Sales Representative Listing

COMPANY

- About Us
- Capabilities
- Certifications
- Contact Us
- Blog
- Careers

QUESTIONS ?

questions / comments

Copyright © 2016 Davies Molding, LLC. All Rights Reserved.
350 Kehoe Blvd. | Carol Stream, IL 60188-1818 | Phone: (800) 554-9208 | Fax: (630) 510-9944