

Adafruit Feather 32u4 AdaLogger

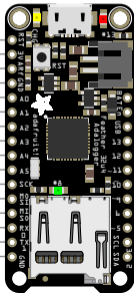
<https://www.adafruit.com/products/2795>

- Power
- GND
- Control
- Arduino Name
- Arduino Pin Number
- GPIO
- ADC
- Arduino ADC
- Other
- INT
- PWM

- PCINT1 SCK
- PCINT2 MOSI
- PCINT3 MISO
- INT2 RX
- INT3 TX

- | | | | | |
|-----|------|------|----|----|
| A0 | ADC7 | PF7 | 18 | A0 |
| A1 | ADC6 | PF6 | 19 | A1 |
| A2 | ADC5 | PF5 | 20 | A2 |
| A3 | ADC4 | PF4 | 21 | A3 |
| A4 | ADC1 | PF1 | 22 | A4 |
| A5 | ADC0 | PF0 | 23 | A5 |
| PB1 | 15 | SCK | | |
| PB2 | 16 | MOSI | | |
| PB3 | 14 | MISO | | |
| PD2 | 0 | D0 | | |
| PD3 | 1 | D1 | | |

- RST
- 3.3V
- AREF
- GND
- VBAT
- EN
- VBUS
- D13 13
- D12 12
- D11 11
- D10 10
- D9 9
- D6 6
- D5 5
- D3 3
- D2 2
- GND



SD Control

D4	25	PD4	ADC8	A6	ICP1	CS
D7	1	PE6	AIN0		INT6	CD

Used by SD Card Module Too

D8	8	PB4	ADC11	A8	LED	PCINT4
PC7						OC4A
PD6			ADC9	A11		!OC4D
PB7						PCINT7
PB6			ADC13	A10		OC0A/OC1C
PB5			ADC12	A9		PCINT6
PD7			ADC10	A7		PCINT5
PC6						OC1B/OC4B
PC5						OC1A/!OC4B
PC4						OC4D
PC3						OC3A/OC4A
INT0						OC0B
INT1						