

Reduction Ratio Designation

Specification	Units	G30A 4:1	G30A 5:1	G30A 6:1	G30A 16:1	G30A 24:1	G30A 36:1	G30A 64:1	G30A 96:1	G30A 144:1	G30A 216:1	G30A 256:1	G30A 384:1	G30A 576:1	G30A 1296:1
Maximum Load	oz-in	350	350	350	500	500	500	920	920	920	920	1250	1250	1250	1250
	Nm	2.47	2.47	2.47	3.53	3.53	3.53	6.5	6.5	6.5	6.5	8.83	8.83	8.83	8.83
Weight (Mass)	oz	3.9	3.9	3.9	4.5	4.4	4.4	4.9	4.9	4.9	4.9	5.5	5.5	5.5	5.5
	g	110.6	110.6	110.6	127.6	124.7	124.7	138.9	138.9	138.9	138.9	155.9	155.9	155.9	155.9
Length (L)	Inches	1.325	1.325	1.325	1.555	1.555	1.555	1.785	1.785	1.785	1.785	2.015	2.015	2.015	2.015
	mm	33.7	33.7	33.7	39.5	39.5	39.5	45.3	45.3	45.3	45.3	51.2	51.2	51.2	51.2
Exact Ratio	-	4/1	5/1	6/1	16/1	24/1	36/1	64/1	96/1	144/1	216/1	256/1	384/1	576/1	1296/1
Efficiency	-	0.90	0.90	0.90	0.81	0.81	0.81	0.73	0.73	0.73	0.73	0.66	0.66	0.66	66
Shaft Rotation	-	CW	CW	CW	CW	CW	CW	CW	CW	CW	CW	CW	CW	CW	CW

Standard Construction

- Sintered steel gears for high torque capacity and low audible noise
- Sintered metal output bearing

Options

- Alternate mounting and shaft configurations
- Additional ratios available
- Output ball bearings for high radial loads

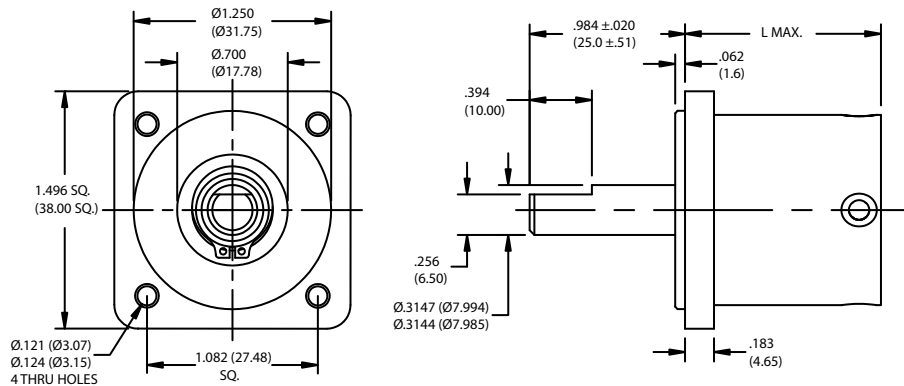
Notes:

¹ Maximum load represents gearbox capability only. Continuous load torque capability will vary with gear ratio, motor selection, and operating conditions.

² Shaft rotation is designated while looking at output shaft with motor operating in a clockwise direction. Gearboxes have bi-directional capability.

³ Flange option adds 31 grams to gearbox weight.

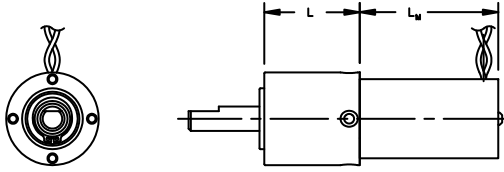
With Optional Square Mounting Flange (G30AF)



This document is for informational purposes only and should not be considered as a binding description of the products or their performance in all applications. The performance data on this page depicts typical performance under controlled laboratory conditions. Actual performance will vary depending on the operating environment and application. AMETEK reserves the right to revise its products without notification. The above characteristics represent standard products. For products designed to meet specific applications, contact PITTMAN Motor Sales Department.

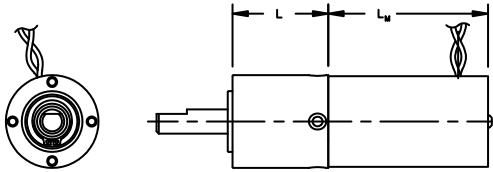
For use with the following motor series:

8690 Series Motor with G30A (GM8190)



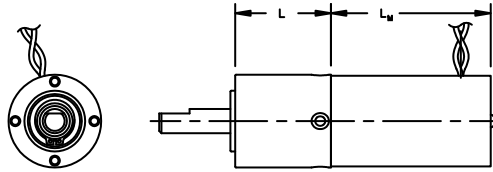
Motor	Length L _M max in (mm)
8691	1.798 (45.67)
8692	1.923 (48.84)
8693	2.173 (55.19)

8220 Series Motor with G30A (GM8120)



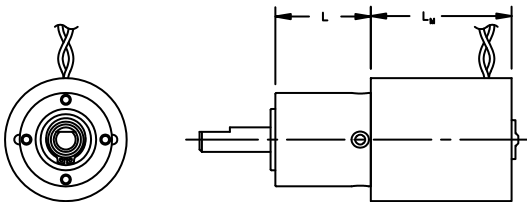
Motor	Length L _M max in (mm)
8222	2.070 (52.58)
8223	2.195 (55.75)
8224	2.445 (62.10)

8540 Series Motor with G30A (GM8540)



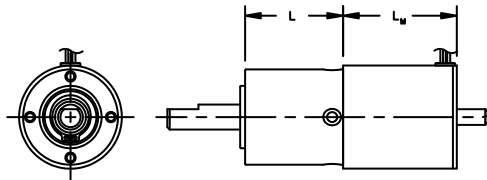
Motor	Length L _M max in (mm)
8541	2.114 (53.69)
8542	2.585 (65.66)
8543	3.057 (77.65)

9230 Series Motor with G30A (GM9630)



Motor	Length L _M max in (mm)
9232	1.828 (46.43)
9233	2.203 (55.96)
9234	2.403 (61.04)
9235	2.703 (68.66)
9236	3.053 (77.55)
9237	3.353 (85.17)

1300 Series Motor with G30A (GM1300)



Motor	Length L _M max in (mm)
1301	1.500 (38.10)
1302	2.000 (50.80)
1303	2.500 (63.50)

Note: All combinations shown are valid for both the G30A and G30AF configurations. Overall length is the same for both the G30A and G30AF as measured from their respective output mounting surfaces.

This document is for informational purposes only and should not be considered as a binding description of the products or their performance in all applications. The performance data on this page depicts typical performance under controlled laboratory conditions. Actual performance will vary depending on the operating environment and application. AMETEK reserves the right to revise its products without notification. The above characteristics represent standard products. For products designed to meet specific applications, contact PITTMAN Motor Sales Department.