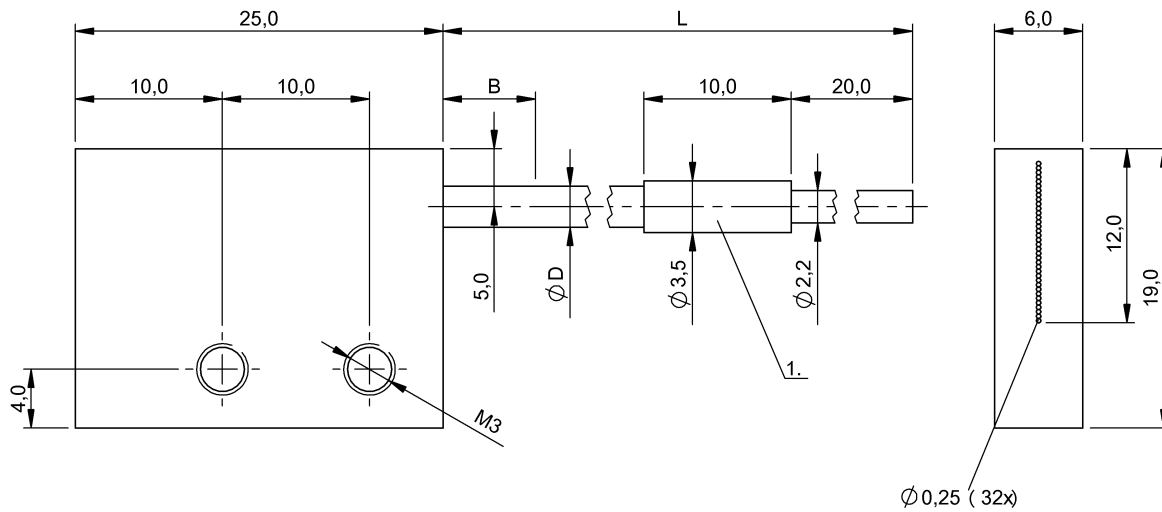


BFO D25-LA-CD-EAK-110-02
BFO0067



1) Protective tube

Electrical connection

Cable diameter D	2.80 mm
Cable length	2 m
Connection	Ø 2.2 mm
Connection type	Adapter sleeve, 2.00 m, PE

Electrical data

Active surface, fibers	Ø 0.25 mm (32x)
------------------------	-----------------

Environmental conditions

Ambient temperature	-55...70 °C
Ambient temperature connection area	Acc. to fiber optic sensor
Protection type IEC 60529	IP65

General data

Basic standard	IEC 60947-5-2
Reference base unit	BFB 75K-001-..
Version	6x19, light grid

Material

Active surface, fiber arrangement	Row
Fiber type material	PMMA
Housing material	Brass
Material jacket	PE

Surface protection

nickel plates

Mechanical data

Cable, bending radius min.	60 mm
Dimension	6 x 19 x 25 mm
Fastening detail	Screw M3
Fiber optic cable, structure	Fiber bundle in plastic jacket
Tensile load max. at 20 °C	6 N (max. 3s)

Optical data

Principle of optical operation	Through-beam sensor
--------------------------------	---------------------

Range/Distance

Effective operating distance Sr	600 mm
Range	600 mm
Rated operating distance Sn	600 mm

Remarks

The scope of delivery includes one set of fiber optics for the transmitter and one for the receiver.
Route fiber optic cable so that no excessive tensile, compression or torsional forces are permitted. Observe permissible bending radiuses. Installation may affect the switching distance.
Actuation object (target): gray card, 200 x 200, lateral approach

BFO D25-LA-CD-EAK-110-02
BFO0067

Symbols for Optoelectronic Sensors

