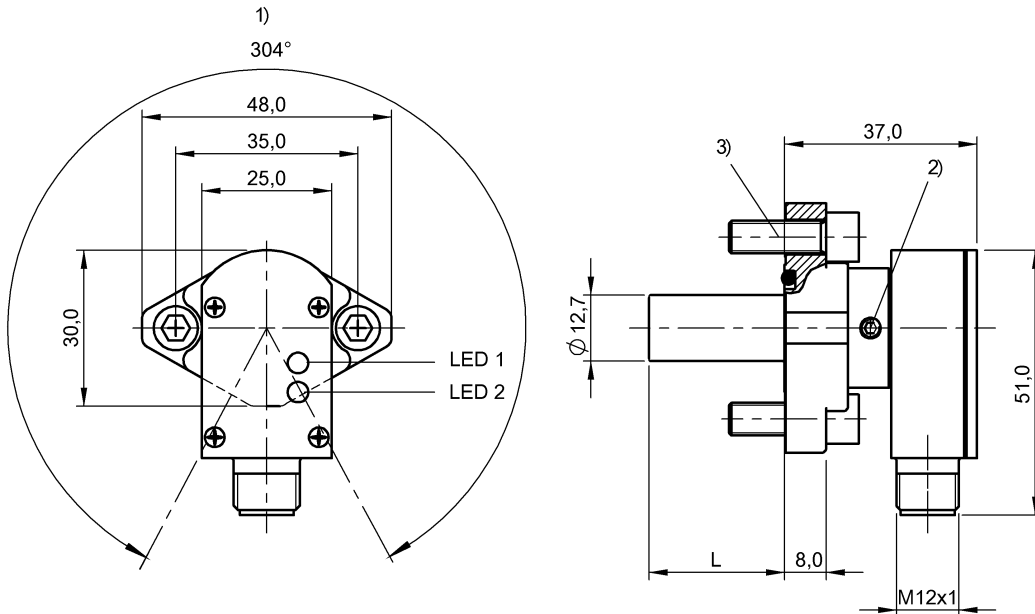


## BES 516-300-S295/1.250"-S4 BHS003M



1) Housing rotatable 304° 2) Tightening torque 1...1.5 Nm 3) Tightening torque 16.5 Nm



IND. CONT. EQ  
81U2  
for use in the secondary of  
a class 2 source of supply  
Environmental - Type 1 Enclosure



### Display/Operation

Function indicator	yes
Power indicator	yes

### Electrical connection

Connection	M12x1-Connector, 4-pole, A-coded
Polarity reversal protected	yes
Short-circuit protection	yes

### Electrical data

Hysteresis H max. (% of Sr)	15.0 %
Load capacitance max. at Ue	1 µF
Magnetic field strength, interference field	100 kA/m
MTTF (40 °C)	640 a
No-load current I <sub>0</sub> max., undamped	10 mA
Operating voltage U <sub>b</sub>	10...30 VDC
Output resistance R <sub>a</sub>	33.0 kOhm + D
Pollution degree	3
Protected against miswiring	yes
Rated insulation voltage U <sub>i</sub>	75 V DC

Rated operating current I <sub>e</sub> DC	200 mA
Rated operating voltage U <sub>e</sub> DC	24 V
Rated short circuit current	100 A
Ready delay t <sub>v</sub> max.	40 ms
Repeat accuracy max. (% of S <sub>r</sub> )	5.0 %
Residual current I <sub>r</sub> max.	80 µA
Switching frequency	10 Hz
Utilization category	DC -13
Voltage drop static max.	2.5 V

### Environmental conditions

Ambient temperature	-25...70 °C
Magnetic field immune	magnetic field immune (AC/DC)
Protection type IEC 60529	IP67

### Functional safety

Diagnostic coverage	0 %
Functional safety	no
Mission Time	20 a

## BES 516-300-S295/1.250"-S4 BHS003M

### General data

Approval/Conformity	CE cULus EAC
Basic standard	IEC 60947-5-2
Scope of delivery	O-ring Ø17.13x2.62 Allen wrench UNC 1/4"- 20x3/4"- 12.9 (2x)
Trademark	Strokemaster

### Material

Gasket, material	FPM 90
Housing material	Stainless steel (1.4104) Zinc, Die casting
Material sensing surface	Ceramic
Surface protection	nickel plates

### Mechanical data

Dimension	51 x 48 x 31.75 mm
Installation	for flush mounting
Length, tolerance	±0.005 in
Pressure rating max.	207 bar
Pressure rating, note	oil pressure rated

Sealing ring, part number	116143
Sealing ring, size	17.13 × 2.62 mm
Size	D12.7

### Output/Interface

Switching output	PNP Normally open (NO)
------------------	------------------------

### Range/Distance

Assured operating distance Sa	1.6 mm
Range	2 mm
Rated operating distance Sn	2 mm
Ripple max. (% of Ue)	15 %
Temperature drift max. (% of Sr)	10 %

### Remarks

LED 1: Function  
LED 2: Operating voltage  
The sensor is functional again after the overload has been eliminated.

For further information on MTTF/B10d, please refer to the MTTF / B10d Certificate.

Specification of the MTTF value and the B10d value do not represent any binding quality and/or life expectancy guarantees.

### Connector view



### Wiring Diagram

