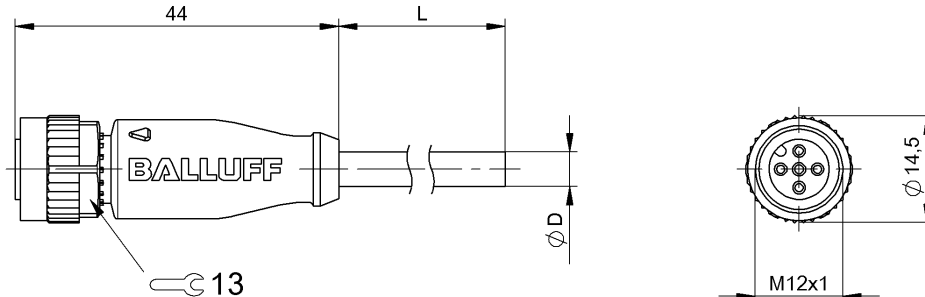


BCC M415-0000-1A-003-PX0434-050
BCC032H



4MT5
(CJ/JV CABLE ASSEMBLY)

Electrical connection

| | |
|-------------------------------------|--|
| Bending radius min., fixed cable | 5 x D |
| Bending radius min., flexible cable | 10 x D |
| Cable | PUR black, 5.00 m, Drag chain compatible |
| Cable diameter D | 4.70 mm ±0.20 mm |
| Cable, bending cycles min. | 5 million |
| Conductor cross-section | 0.34 mm ² |
| Number of conductors | 4 |
| Number of pins | 5 |
| System | Molded |

Electrical data

| | |
|---|-------|
| Horizontal travel permitted, drag chain | 5 m |
| Rated current (40 °C) | 4.0 A |
| Vertical travel permitted, drag chain | 5 m |

Environmental conditions

| | |
|-------------------------------------|-------------|
| Cable temperature, drag chain | -25...60 °C |
| Cable temperature, fixed routing | -50...90 °C |
| Cable temperature, flexible routing | -25...90 °C |
| Protection type IEC 60529 | IP68 |

Functional safety

| | |
|--|-------|
| Cable temperature UL max., fixed routing | 80 °C |
|--|-------|

Cable temperature UL max., flexible routing 80 °C

General data

| | |
|---------------------|--------------|
| Approval/Conformity | cULus LISTED |
|---------------------|--------------|

Material

| | |
|--------------------------|---------------|
| Material contact carrier | PUR |
| Material contacts | Bronze |
| Material cover nut | Die-cast zinc |
| Material grip | PUR |

Mechanical data

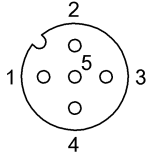
| | |
|---------------------------------|--------------------|
| Acceleration max., drag chain | 5 m/s ² |
| Tightening torque pigtail | 0.6 Nm |
| Traverse speed max., drag chain | 200 m/min |

Remarks

Enclosure rating per IEC 60529, only in screwed state with the associated mating piece.
Cable construction acc. to UL-AWM Style 20549
Halogen-free per DIN VDE 0472 Part 815
Silicone-free
Flame-retarding acc. to IEC 60332-2

BCC M415-0000-1A-003-PX0434-050
BCC032H

Connector view



PIN 1: brown PIN 2: white PIN 3: blue PIN 4: black

Wiring Diagram

