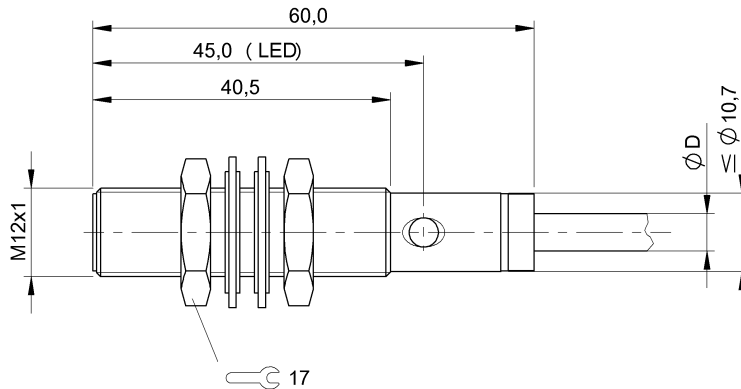


BES 516-449-BO-L-05 BES02C9



Display/Operation

Function indicator	yes
--------------------	-----

Electrical connection

Cable diameter D	4.60 mm
Cable length	5 m
Conductor cross-section	0.34 mm ²
Connection type	Cable, 5.00 m, PVC
Number of conductors	2
Polarity reversal protected	yes
Short-circuit protection	no

Electrical data

Hysteresis H max. (% of Sr)	15.0 %
Pollution degree	3
Rated insulation voltage Ui	250 V AC
Rated operating current Ie DC	500 mA
Rated operating voltage Ue AC	110 V
Ready delay tv max.	100 ms
Repeat accuracy max. (% of Sr)	5.0 %
Residual current Ir max.	1700 µA
Switching frequency	25 Hz
Utilization category	AC-140
Voltage drop static max.	4 V

Environmental conditions

Ambient temperature	-25...70 °C
Protection class	II
Protection type IEC 60529	IP67

General data

Approval/Conformity	cULus CE
Basic standard	IEC 60947-5-2

Material

Housing material	Brass
Material jacket	PVC
Material sensing surface	PA 12
Surface protection	nickel plates

Mechanical data

Dimension	Ø 12 x 60 mm
Installation	for flush mounting
Size	M12x1
Tightening torque	17 Nm

Range/Distance

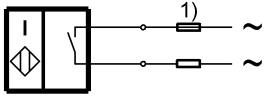
Assured operating distance Sa	1.6 mm
Range	2 mm
Rated operating distance Sn	2 mm
Temperature drift max. (% of Sr)	10 %

Remarks

Recommendation: After a short circuit check the device for proper function. A filter is required for the EMC protection circuit. Conducted interference emission. Epcos, Model: B84112B0000B030.

BES 516-449-BO-L-05
BES02C9

Wiring Diagram



1) For SCP see electrical data