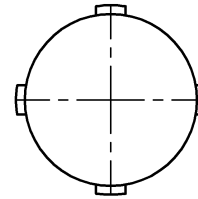
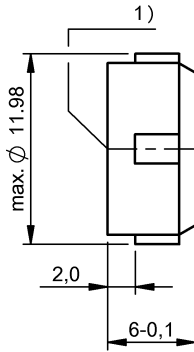


BIS M-105-02/A
BIS0042



1) Sensing surface



Electrical data

Data retention time/years	≥ 10 at 55 °C
Memory capacity	2000 Byte
Memory organization	250 × 8 bytes
Memory size, read	8 Byte
Programming cycles	10 000 000 000
Programming time	for 16 bytes: 0.060s
Read cycles	Unlimited
Read time	for 16 bytes: 0.03 s User ID for 8 bytes: 0.02 s

Environmental conditions

Ambient temperature	-25...70 °C
EN 60068-2-27, Continuous shock load	yes
EN 60068-2-27, Shock	yes
EN 60068-2-6, Vibration	yes
Protection type IEC 60529	IP67
Storage temperature	-25...85 °C

Functional safety

Diagnostic coverage	0.0 %
EN 60068-2-32 Free fall	yes
Functional safety	no

Mission Time 20 a

General data

Antenna type	round
Approval/Conformity	CE
EN 55022	Size 1, Cl. B

Material

Housing material Epoxy-resin/fiberglass, GF

Mechanical data

Application weight	1.50 g
Dimension	Ø 11.98 x 6 mm
Installation	for flush mounting (in steel)

Remarks

Time specification includes data check.
For installation requirements see corresponding read/write head.
Only when used together with the appropriate read/write head.
Values are under rated conditions unless otherwise specified.
Impact loading not permitted.