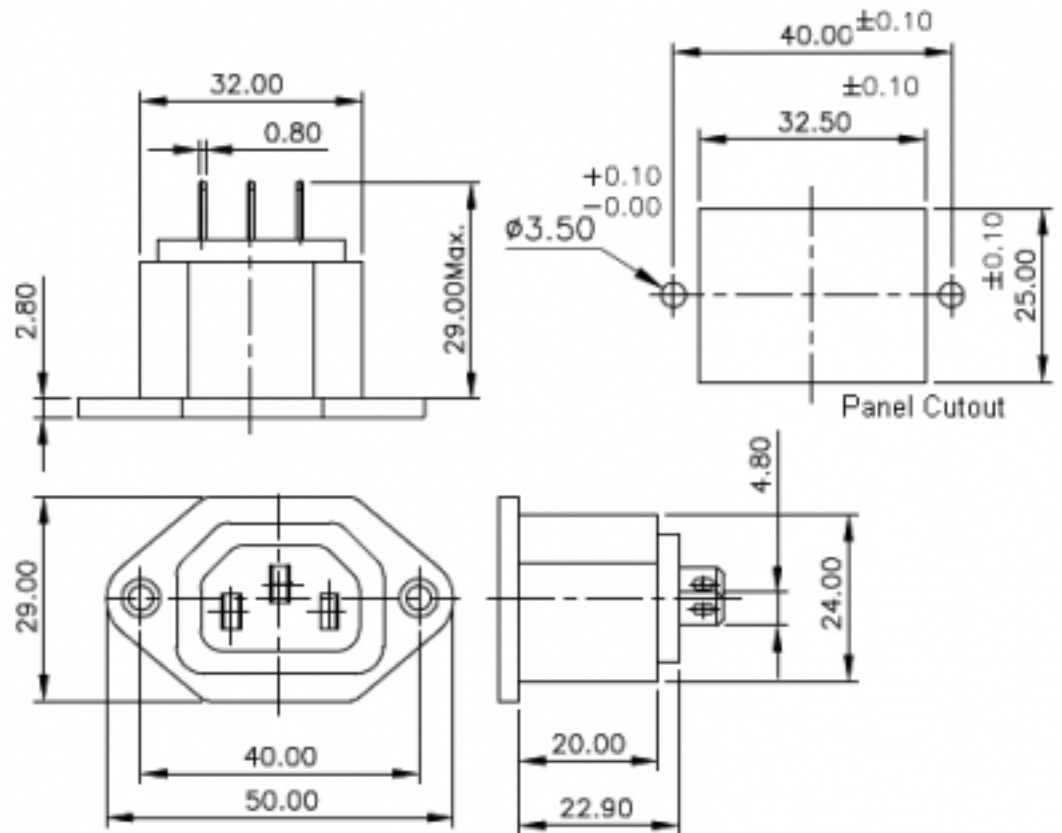
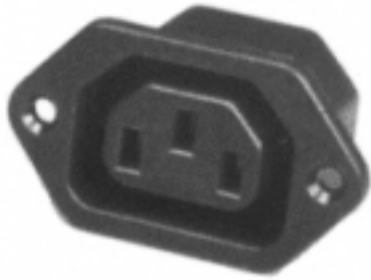


Approvals: 



Screw mounting IEC outlet

Specifications

Mounting Style:	Panel, Screw-type
Approvals:	UL(C, US), VDE, CE
Terminals:	Solder Type / fast-on 4.8 X 0.80
Reference Standard:	IEC 60320-1
Permissible Temp With/Without Load:	0 deg. C to + 70 deg. C
Permissible Temp For Soldering:	270 deg. C for 5 sec. max.
Panel Thickness:	N.A.
Material - Terminals:	Copper alloy, Tin plated
Material - Body:	Nylon-6 GF 20%, V2
Insulation Resistance at 500 V DC:	1000 M ohms min.
H. V. Break Down Test:	2 KVAC for 1 minute
Contact Resistance (Initial):	20 m ohms max.
Current & Voltage Rating:	10 Amps (VDE), 15 Amp (UL, CSA) 250 VAC