

Professionally approved products.

Product Datasheet

Barrel Gear Coupling

E

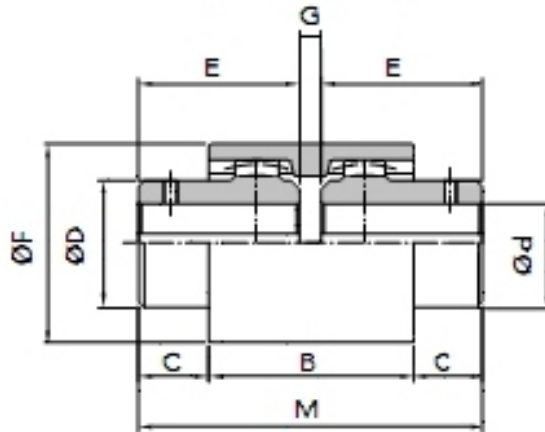


RS, Professionally Approved Products, gives you professional quality parts across all products categories. Our range has been testified by engineers as giving comparable quality to that of the leading brands without paying a premium price.

RS Barrel Gear Couplings

Flexible couplings having two fully machined steel hubs with crowned barrel shaped teeth. These transmit torque by meshing with the axially parallel involute gear teeth of the sleeve.

- Fast and easy to fit
- No maintenance required
- Hubs provided un-bored for maximum flexibility



Dimensions

RS	Code	Bore Ø mm		Dimensions mm							Weight Kg	
		Min	Max	B	C	ØD	E	ØF	G	M	Hub	Sleeve
8100690	FCGX14-N	6	14	37	6.5	25	23	40	4	50	0.06	0.01
8100694	FCGX19-N	8	19	37	8.5	32	25	48	4	54	0.09	0.01
8100704	FCGX24-N	10	24	41	7.5	36	26	52	4	56	0.11	0.01
8100707	FCGX28-N	10	28	46	19	44	40	66	4	84	0.28	0.03
8100701	FCGX32-N	12	32	48	18	50	40	76	4	84	0.37	0.04

Technical Data

RS	Code	Torque		Permissible power transmission at an RPM of							
		Nm		750		1000		1500		3000	
		Norm	Max	Norm	Max	Norm	Max	Norm	Max	Norm	Max
8100710	FCGX14	10	20	0.8	1.56	1.05	2.1	1.58	3.14	3.12	6.24
8100713	FCQX19	16	32	1.25	2.5	1.67	3.34	2.52	5.02	5.04	10.08
8100717	FCQX24	20	40	1.58	3.15	2.1	4.2	3.14	6.28	6.26	12.52
8100726	FCQX28	45	90	3.52	7.07	4.72	9.43	7.08	14.12	14.14	28.28
8100729	FCQX32	60	120	4.7	9.43	6.28	12.58	9.4	18.85	18.83	37.66